

**Ordering number C10918_BRIDGET-S**

Family	Bridget	FWHM	38 degrees
Type	Reflector	Efficiency	88 %
LED	CXA15	cd/lm	1.200
Color	Metal	Gerber File	Available
Diameter	22.6 mm		
Height	12.8 mm		
Style	Hexagonal		
Optic Material	PC		
Holder Material	-		
Fastening	Glue		
Status	Ready		

**Ordering number C10919_BRIDGET-M**

Family	Bridget	FWHM	46 degrees
Type	Reflector	Efficiency	90 %
LED	CXA15	cd/lm	1.400
Color	Metal	Gerber File	Available
Diameter	22.6 mm		
Height	12.8 mm		
Style	Hexagonal		
Optic Material	PC		
Holder Material	-		
Fastening	Glue		
Status	Ready		

**Ordering number C10920_BRIDGET-W**

Family	Bridget	FWHM	60 degrees
Type	Reflector	Efficiency	87 %
LED	CXA15	cd/lm	0.900
Color	Metal	Gerber File	Available
Diameter	22.6 mm		
Height	12.8 mm		
Style	Hexagonal		
Optic Material	PC		
Holder Material	-		
Fastening	Glue		
Status	Ready		

NOTE: The typical divergence will be changed by different color, chip size and chip position tolerance. The typical total divergence is the full angle measured where the luminous intensity is half of the peak value.



PRODUCT DATASHEET

Bridget series

last update 3/10/2012

GENERAL INFORMATION

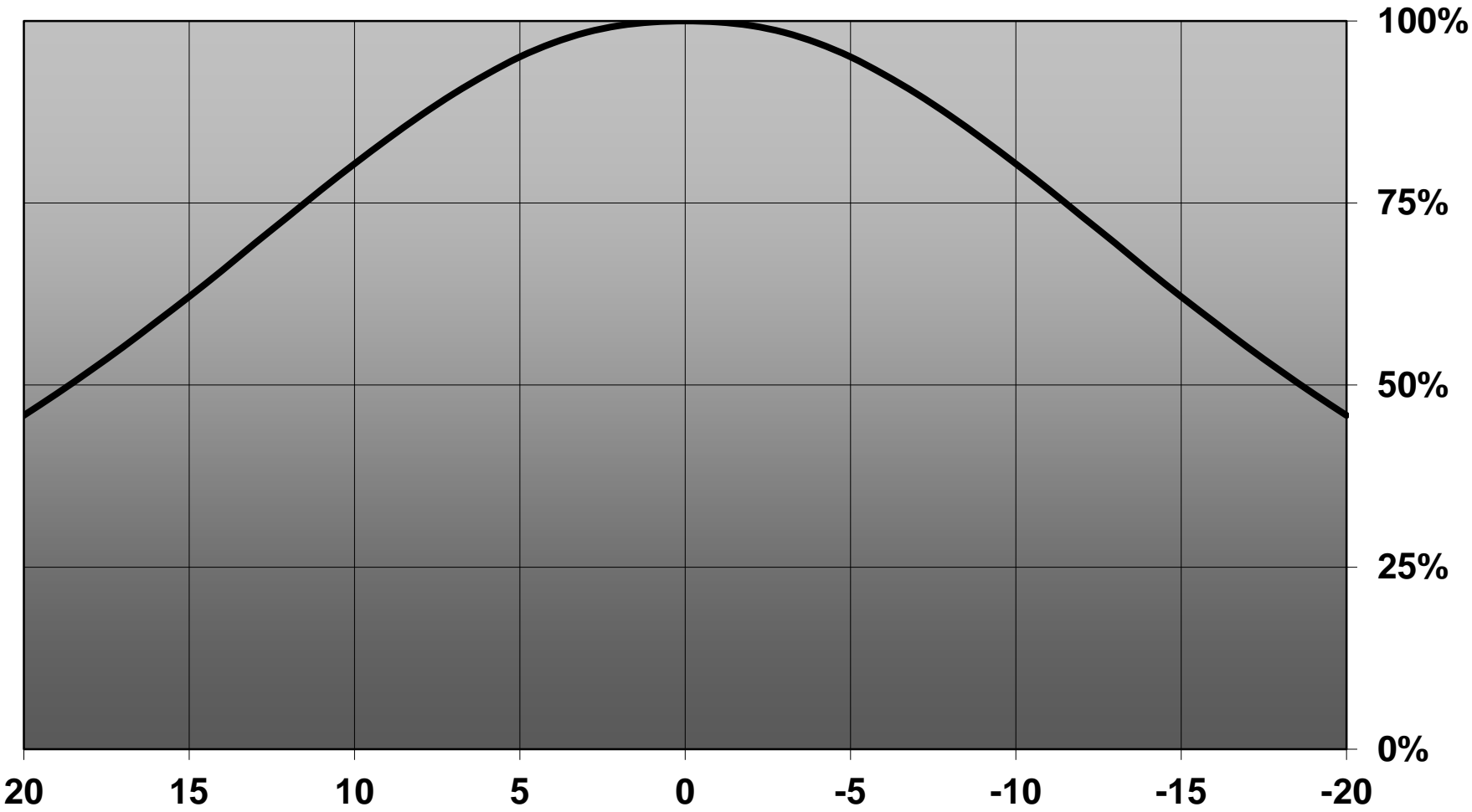
- Product series especially designed & optimized for CXA15 series of LEDs.
- Special care taken to make light distribution as uniform as possible.
- Reflector is made of aluminium coated PC (120 degrees of Celcius / 248 degrees of Fahrenheit) with protective lacquer (110 degrees of Celcius / 230 degrees of Fahrenheit).
- Fastening to PCB with appropriate adhesive. By clicking link below you can find Ledil recommended glue options.
http://www.ledil.com/datasheets/DataSheet_GLUES.pdf

NOTE 1: We advise customer to ensure the suitability and sufficiency of the bond in the end product. For example, mechanical stress, vibration and holes on the surface of the circuit board weaken the strength of the glue.

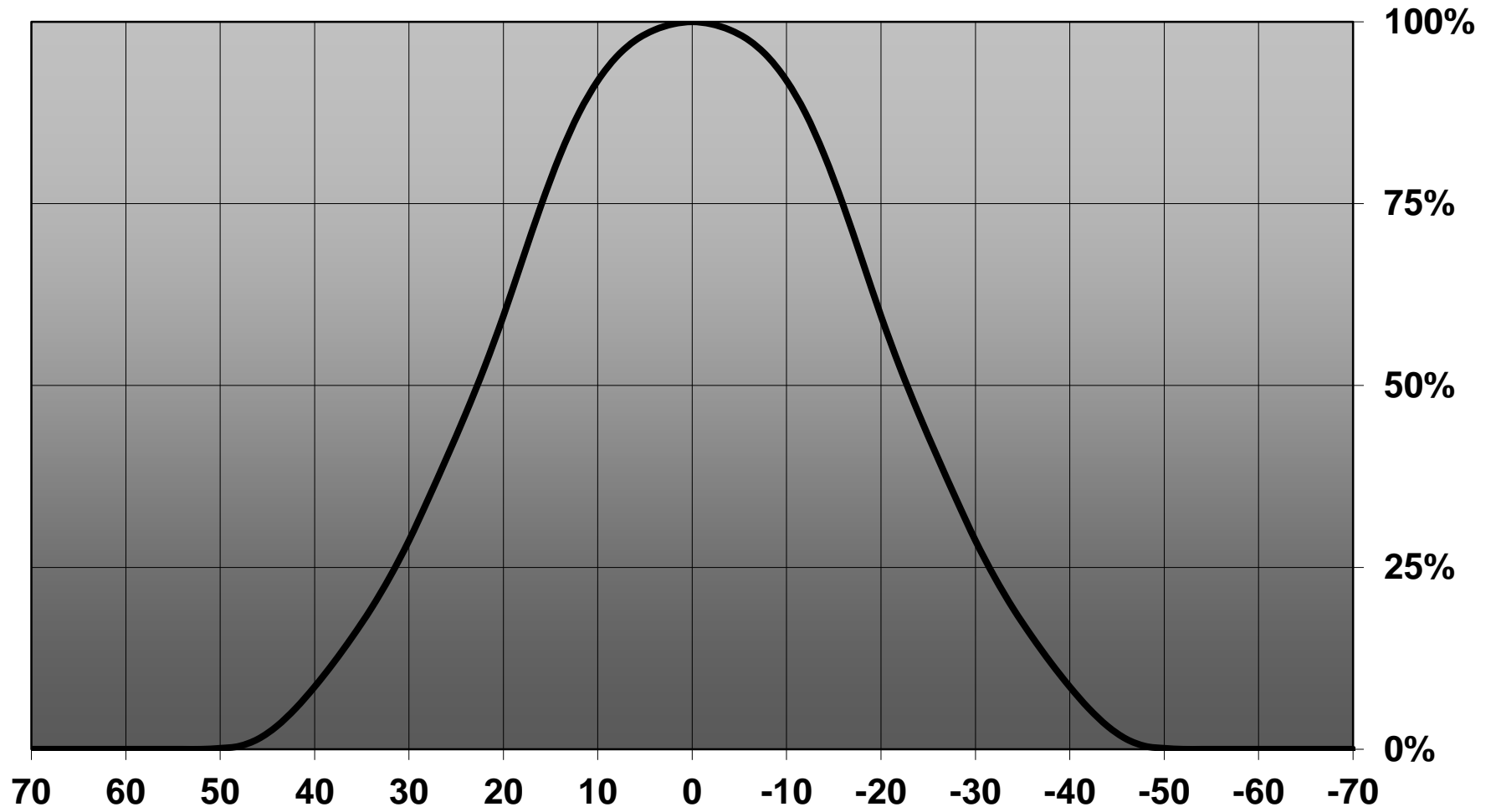
NOTE 2: All surfaces where glue is applied must be clean, dry and free from grease and dirt. If cleaning of PCB surfaces is needed, please follow strictly the cleaning instructions of your LED manufacturer -this is important as cleaning shall under no circumstances damage LEDs or other electronics components on the PCB.

Further note that optical components shall not be cleaned with any chemicals - only micro fiber cloth may be used to remove fingerprints or other traces from handling.

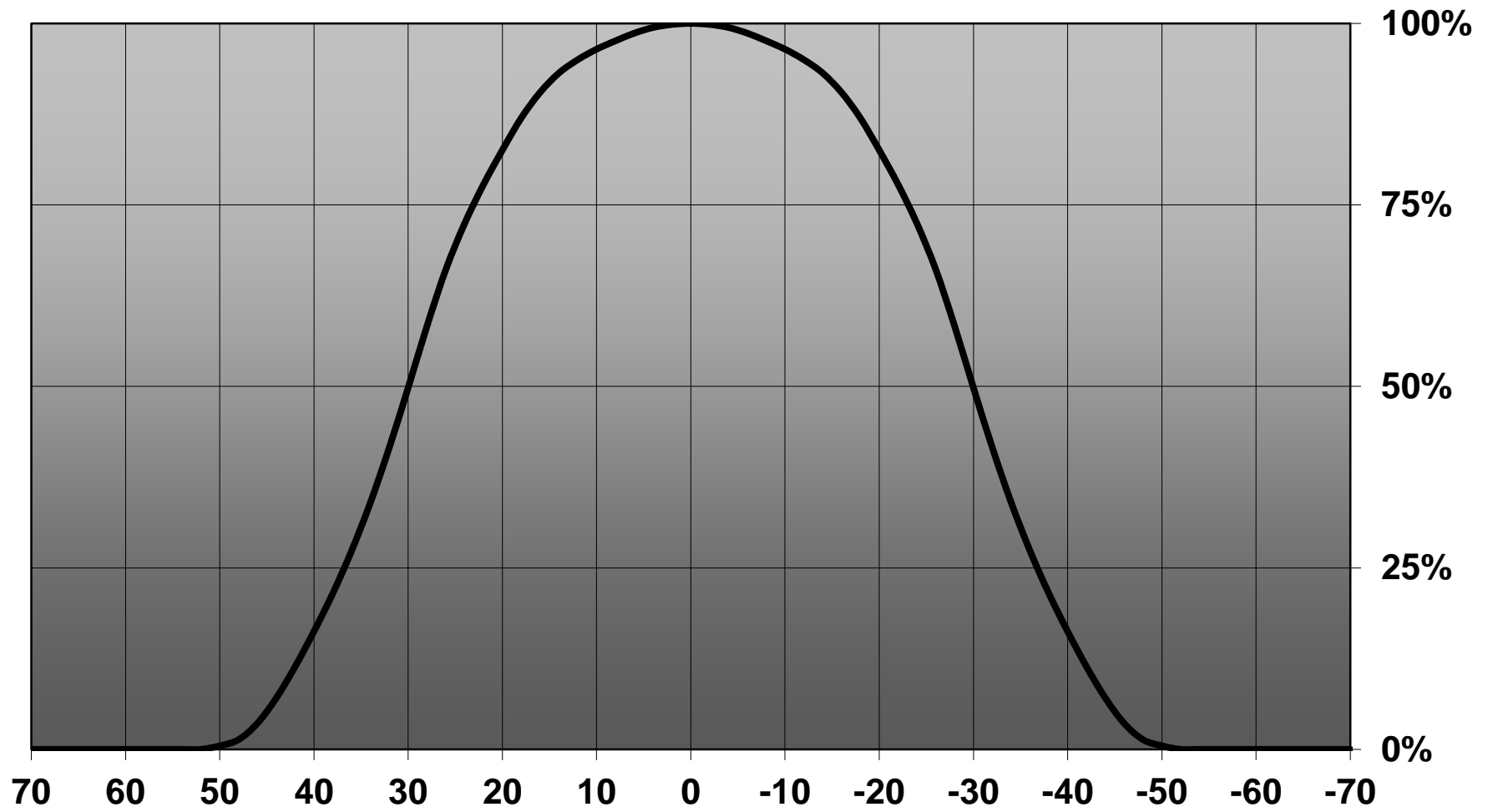
Relative intensity of C10918_BRIDGET-S



Relative intensity of C10919_BRIDGET-M



Relative intensity of C10920_BRIDGET-W



D

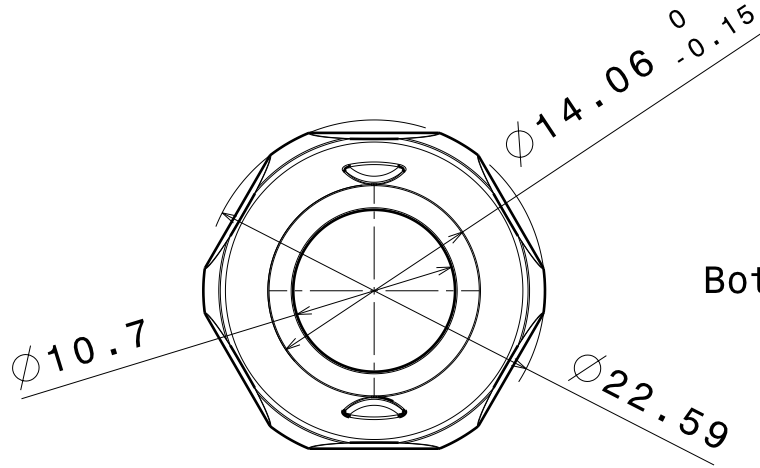
C

B

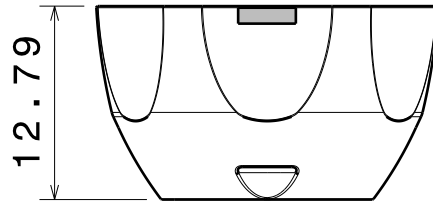
A



Isometric view
Scale: 1:1



Bottom view



Front view

Material: PC with Metal coating
and clear lacquer

Part no.s:
Spot C10918_Bridget-S
Medium C10919_Bridget-M
Wide C10920_Bridget-W

This drawing is our property.
It can't be reproduced
or communicated without
our written agreement.



Ledil Oy
Tehdaskatu 13
FIN-24100 SALO
Finland

DRAWING TITLE

Datasheet Bridget Reflector

DRAWN BY pv		DATE 06.05.2009		DRAWING TITLE Datasheet Bridget Reflector			
CHECKED BY tk		DATE 27.04.2009		SIZE A4	DRAWING NUMBER C10918-10920		REV 1
DESIGNED BY hh		DATE 27.04.2009		SCALE 2:1	WEIGHT (g)	SHEET 1 / 1	

D

A

4

4

3

3

2

2

1

1