

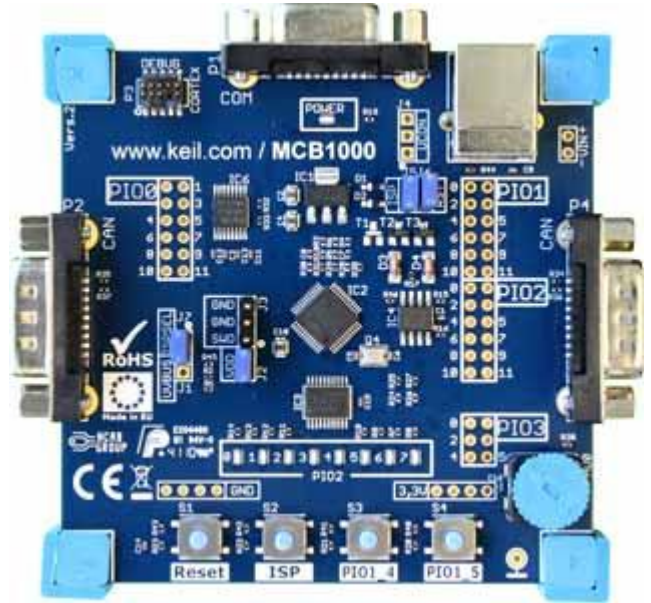
MCB1000

Evaluation Board and Starter Kit


The Keil MCB1000 Evaluation Boards enable you to create and test working programs based on the NXP family of ARM Cortex™-M0 and Cortex-M3 processor-based devices.

It is available in four configurations:

- The MCB1114 is populated with a NXP [LPC1114FBD48/302](#) device
- The MCB11C14 is populated with a NXP [LPC11C14FB48/301](#) device with CAN
- The MCB11U14 is populated with a NXP [LPC11U14FB48/201](#) device with USB
- The MCB1343 is populated with a NXP [LPC1343FBD48](#) device with USB



Features

- 50MHz ARM Cortex-M0 processor-based MCU in 48-pin LQFP (MCB1114, MCB11C14 & MCB11U14)
- 72MHz ARM Cortex-M3 processor-based MCU in 48-pin LQFP (MCB1343)
- On-Chip Memory: 32KB Flash and 8KB RAM (6KB LPC11U14)
- CAN 2.0 Interface (LPC11C14 only)
- USB 2.0 Device (LPC11U14 and LPC1343 only)
- Serial Interface
- Potentiometer for ADC Input
- Up to 42 GPIO
- 8 User LEDs + power
- 4 push-buttons (2 GPIO, ISP, & reset)
- Power via USB connector
- Debug Interface [Connectors](#)
 - 10-pin Cortex debug (0.05 inch connector) 

Evaluation Software

The MCB1000 Evaluation Boards and Starter Kits include the [MDK-Lite](#) development tools. These tools help you get started writing programs and testing the microcontroller and its capabilities. Sample applications that run on the MCB1000 evaluation boards, and a Quickstart guide are included.

Ordering Information

The MCB1000 is available as stand alone evaluation boards or as [starter kits](#) which includes the [ULINK-ME](#) debug adapter.

- **MCB1114:** MCB1114 evaluation board
- **MCB1114UME:** MCB1114 starter kit (includes ULINK-ME)
- **MCB11C14:** MCB11C14 evaluation board
- **MCB11C14UME:** MCB11C14 starter kit (includes ULINK-ME)
- **MCB11U14:** MCB11U14 evaluation board
- **MCB11U14UME:** MCB11U14 starter kit (includes ULINK-ME)
- **MCB1343:** MCB1343 evaluation board
- **MCB1343UME:** MCB1343 starter kit (includes ULINK-ME)