

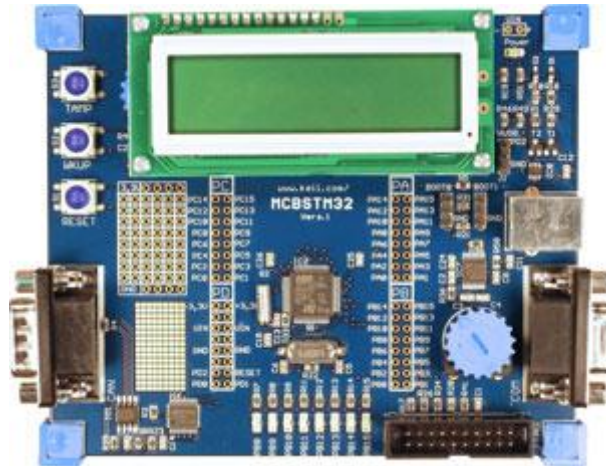


MCBSTM32 Evaluation Board



MCBSTM32

Evaluation Board and Starter Kit



The Keil MCBSTM32 Evaluation Board enables you to create and test working programs based on the STMicroelectronics STM32 family of ARM Cortex™-M3 processor-based devices.

Features

- 72MHz STM32F103RB ARM Cortex™-M3 processor-based MCU in 64-pin LQFP
- On-Chip Memory: 128KB Flash & 20KB RAM
- USB 2.0 Full Speed Device Interface
- CAN and UART interfaces
- I²C, SPI and GPIO via PCB headers
- Character LCD (16x2)
- Analog Voltage Control for ADC Input
- 8 LEDs and 3 push-buttons
- Power via USB connector
- Debug Interface [Connectors](#)
 - 20-pin ARM Standard JTAG (0.1 inch connector)



Evaluation Software

The MCBSTM32 Evaluation Board and Starter Kit include the [MDK-ARM Evaluation Tools](#). These tools help you get started writing programs and testing the microcontroller and its capabilities. Sample applications that run on the MCBSTM32 and a Quickstart guide are included.

Ordering Information

The MCBSTM32 is available as a stand alone evaluation board or as a [starter kit](#) which includes the [ULINK-ME](#) debug adapter.

- **MCBSTM32:** MCBSTM32 evaluation board
- **MCBSTM32UME:** MCBSTM32 starter kit (includes ULINK-ME)