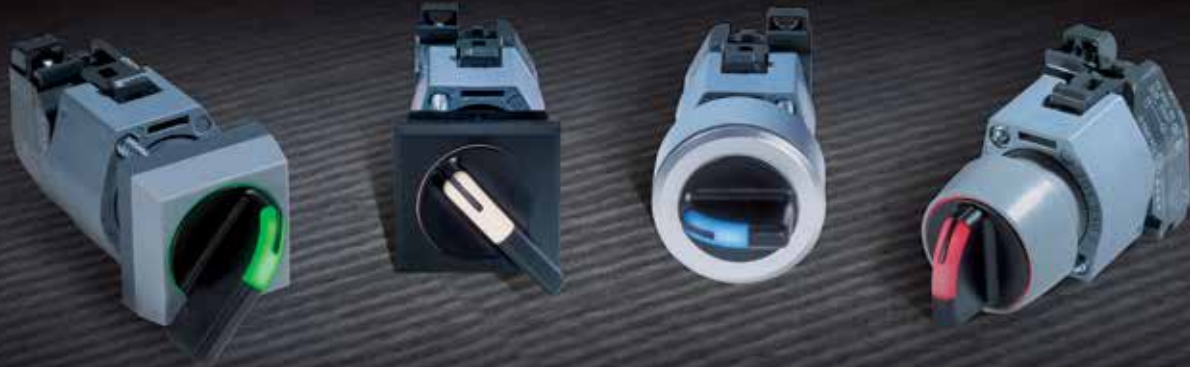


## Series 04 | Illuminated Selector Switch



EAO, the expert partner for Human Machine Interfaces, extends the Series 04 range with a new illuminated selector switch. With IP67/IP65 environmental protection, new LED illumination and an ergonomic design according to DIN5566-1, this 22.5/30.5 mm mounted component is suitable for a wide range of applications in rail vehicles and machinery. Its switching element has been tested to achieve at least 1.25 million operations. The switch is available in 2- and 3-position versions with a combination of momentary and maintained actions. This EAO product safely operates in temperatures from  $-25^{\circ}\text{C}$  to  $+55^{\circ}\text{C}$ .

### Main features

- Single or bi-colour illumination
- Modern design with rounded corners – conforms to DIN5566-1
- High environmental resistance – conforms to IP65 and IP67
- Momentary, maintained or combinations of each action
- Long product service life – more than one million operating cycles

### Typical applications

- Control panels for railway and light rail
- Machinery control panels
- Process control panels

### Materials

Front ring (Series 04)	Polyamide, Aluminium or Stainless Steel
Mounting flange (Series 04)	Polyethylene terephthalate
Actuator housing (new)	Polycarbonate

### Switching system

The illuminated selector switch can be used with any Series 04 switching element.

### Mechanical characteristics

Mechanical lifetime	2.5 million cycles of operation (momentary) 1.25 million cycles of operation (maintained)
Actuating force	12 ... 25 Ncm (with switching element) depending on the switching positions

### Environmental conditions

Storage temperature	$-40^{\circ}\text{C}$ ... $+85^{\circ}\text{C}$
Operating temperature	$-25^{\circ}\text{C}$ ... $+55^{\circ}\text{C}$
Front protection	IP67, IP65
Approvals	regarding Series 04

### LED illuminations

Bi-colour	Voltage	Current
Red/Green	24 VDC	15 mA
Red/Yellow	24 VDC	15 mA
Green/Yellow	24 VDC	15 mA

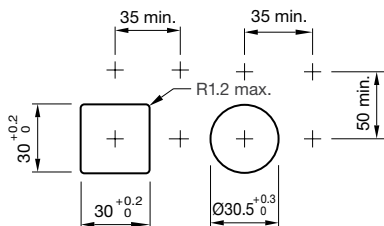
Single-LED	Voltage	Current
Red	24 VAC/DC	15 mA
Yellow	24 VAC/DC	15 mA
Green	24 VAC/DC	7 mA
Blue	24 VAC/DC	15 mA
White	24 VAC/DC	15 mA

For further voltages please see Series 10.

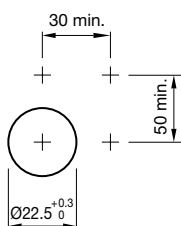
Series 04 | Illuminated Selector Switch

**Mounting cut-outs**

Flush design



Raised design



**Switching positions**



2 positions

■ Momentary



2 positions

■ Maintained

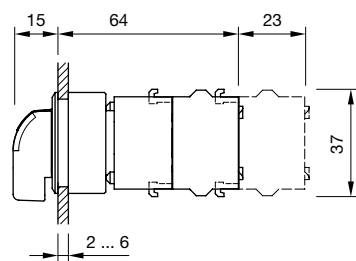


3 positions

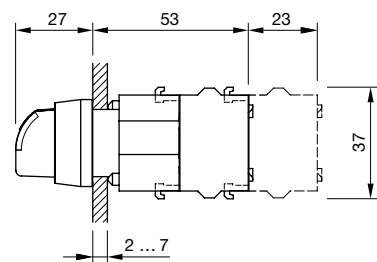
■ Momentary/Momentary  
■ Maintained/Maintained  
■ Momentary/Maintained  
■ Maintained/Momentary

**Dimensions**

Flush design

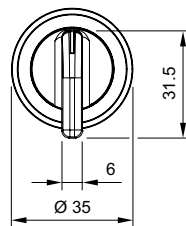


Raised design

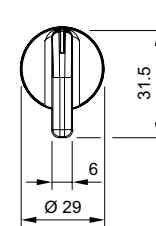


Long lever

Flush design

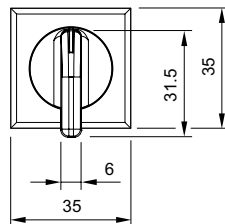


Raised design

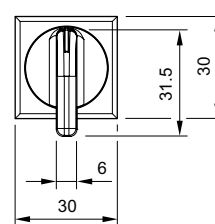


Front bezel square

Flush design

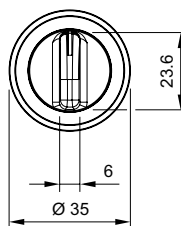


Raised design

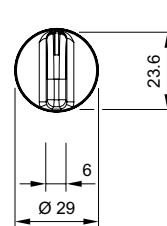


Short lever

Flush design

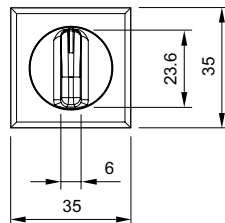


Raised design



Front bezel square

Flush design



Raised design

