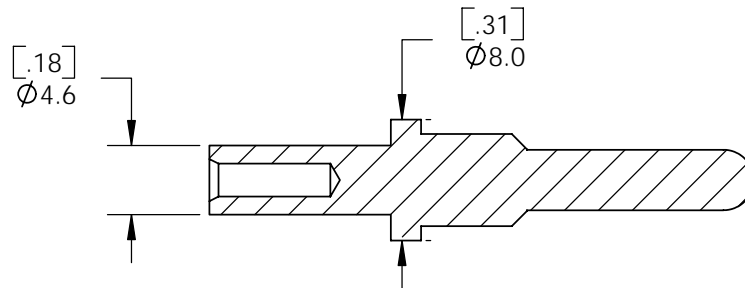
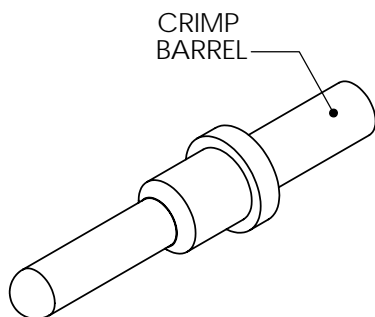
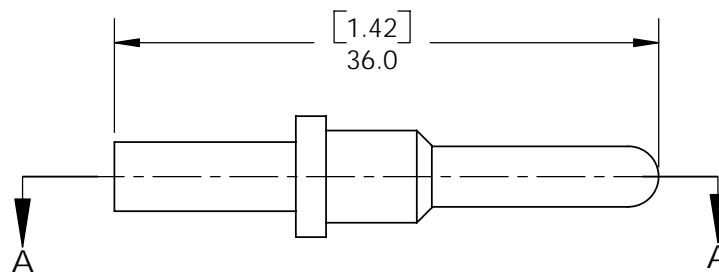
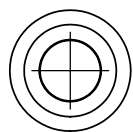




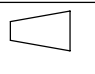
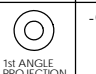
THE INFORMATION CONTAINED IN THIS DRAWING IS THE SOLE PROPERTY OF ANDERSON POWER PRODUCTS. ANY REPRODUCTION IN PART OR WHOLE WITHOUT THE WRITTEN PERMISSION OF ANDERSON POWER PRODUCTS IS PROHIBITED.

Copyright 2005

ANDERSON POWER PRODUCTS RESERVES THE RIGHT TO ALTER PRODUCT TYPES, THEIR TECHNICAL DATA, DIMENSION, STYLE AND ACCESSORIES WITHOUT PRIOR NOTIFICATION.



SECTION A-A

DIMENSIONS ARE IN:		<input checked="" type="checkbox"/> INCH[MM]	<input type="checkbox"/> MM[INCH]	APPROVALS		 ANDERSON POWER PRODUCTS	
UNLESS OTHERWISE STATED				DRAWN	AMP	5/11/05	TITLE SALES OUTLINE EBC DIN AUX. PIN CONTACT CAT. NO. 320-22 (14/18 AWG)
TOLERANCES:				CHECKED	DJD	5/11/05	
DECIMALS (INCH)	DECIMALS (MM)	ANGLES		MFG APP	CHB	5/11/05	
XX ± .02	X ± .5	± 2°		QC APP	UFN	5/11/05	
SURFACE FINISH:				ENG APP	DAM	5/11/05	
MACHINED		128 [3.2] ✓		SIZE	A/A4	DWG NO.	320-22 S1
MOLDED		64 [1.6] ✓		SCALE	NONE	REV.	0
MATERIAL: COPPER ALLOY				-CAD GENERATED DRAWING- DO NOT MANUALLY UPDATE DO NOT SCALE		CADFILE	02317
FINISH: SILVER PLATE				  		SHEET	1 OF 1

REV.	DESCRIPTION OF CHANGES	APPROVED	DATE