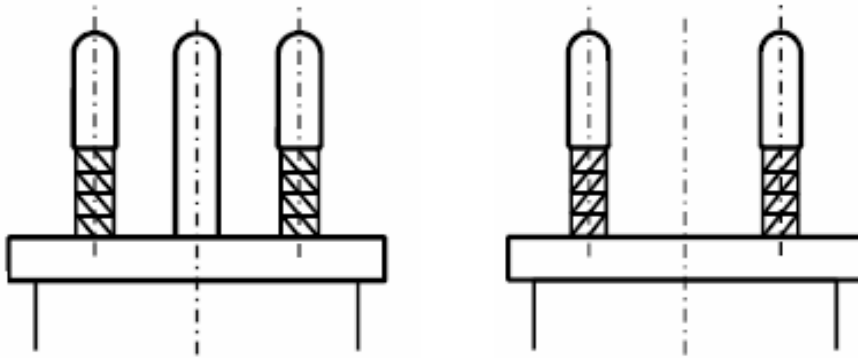


New Swiss Power Plugs



December/4/2009, the commission TK23B released the new standard edition SEV 1011:2009 for Swiss plugs, sockets and socket-outlets.

What are the main differences?

- Swiss plugs type 11 and 12 have a new design. The most obvious difference is the introduction of insulating sleeves on pins of plug type 11 and 12. Refer to standard SEV 1011:2009 sheets SEV 6534-2 and SEV 6533-2.
- Plugs and sockets according to the old edition of SEV 1011:1991 can be tested and put onto the market until **December/31/2012**.
- Tests and market introduction according the new edition of SEV 1011:2009 can be done immediately.
- Standard sheets of the following plug and sockets have been revised: type 11, 12, 13, 21, 23, 15, 25.
- Socket type 12 according to SEV 1011, sheet 6534-1 will not be allowed to put on the market after **December/31/2016**.
- The new, full edition of SEV 1011:2009 can be ordered at www.normenshop.ch Single standard sheets will not be sold anymore.

Please do not hesitate to contact us if there are any questions:

Phone +41 44 956 11 11
Email testing@electrosuisse.ch