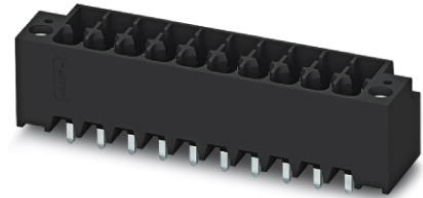



DMCV 1,5/ 7-G1F-3,5-LR P20THR

Order No.: 1787441

<http://eshop.phoenixcontact.co.uk/phoenix/treeViewClick.do?UID=1787441>

Header, Nominal current: 8 A, Rated voltage (III/2): 160 V, Number of positions: 7, Pitch: 3.5 mm, Color: Black, Contact surface: Tin, Assembly: SMD/THT/THR

Commercial data

| | |
|--------------------------|--|
| EAN |  4 046356 597067 |
| Note | Made-to-order |
| Pack | 50 |
| Customs tariff | 85366990 |
| Gross weight in pieces | 3.80 g |
| Country of Origin | DE |
| Catalog page information | Page 177 (CC-2011) |

Product notes

WEEE/RoHS-compliant since:
12/07/2010



Please note that the data given here has been taken from the online catalog. For comprehensive information and data, please refer to the user documentation at <http://www.download.phoenixcontact.com>. The General Terms and Conditions of Use apply to Internet downloads.

Technical data

Dimensions / positions

| | |
|---------------------|--------------|
| Length | 10.6 mm |
| Height | 12 mm |
| Pitch | 3.5 mm |
| Dimension a | 21 mm |
| Number of positions | 7 |
| Pin dimensions | 0,8 x 0,8 mm |

| | |
|---------------|---------|
| Pin spacing | 5.50 mm |
| Hole diameter | 1.4 mm |

Technical data

| | |
|---|---------------------|
| Range of articles | DMCV 1,5/..-G1F-THR |
| Insulating material group | IIIa |
| Rated surge voltage (III/3) | 2.5 kV |
| Rated surge voltage (III/2) | 2.5 kV |
| Rated surge voltage (II/2) | 2.5 kV |
| Rated voltage (III/2) | 160 V |
| Rated voltage (II/2) | 250 V |
| Connection in acc. with standard | EN-VDE |
| Nominal current I_N | 8 A |
| Nominal voltage U_N | 160 V |
| Maximum load current | 8 A |
| Insulating material | LCP |
| Inflammability class according to UL 94 | V0 |
| Color | Black |
| Nominal voltage, UL/CUL Use Group B | 150 V |
| Nominal current, UL/CUL Use Group B | 8 A |

Certificates



Certification

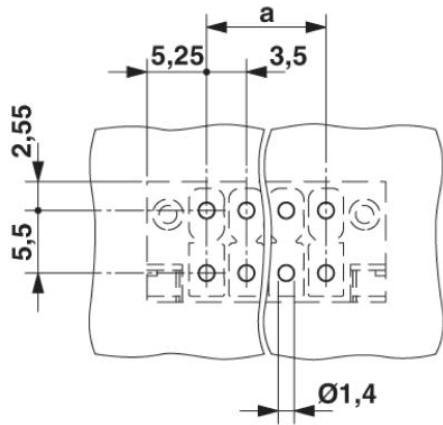
cULus Recognized

Certifications applied for:

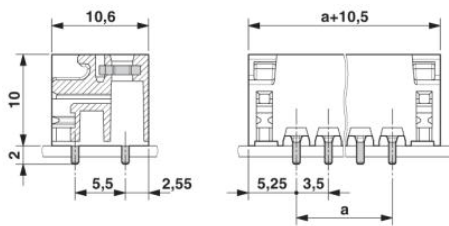
Certification Ex:

Drawings

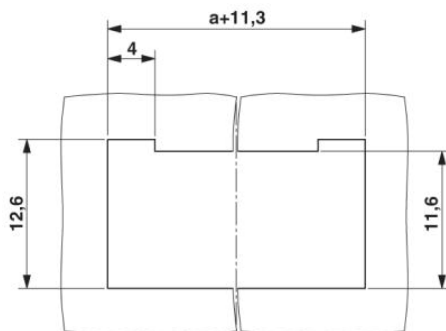
Drilling plan/solder pad geometry



Dimensioned drawing



Schematic diagram



Address

PHOENIX CONTACT Ltd
Halesfield 13
Telford / Shropshire / TF7 4PG,England
Phone 01952 681 700
Fax 01952 681 799
<http://www.phoenixcontact.co.uk>



Phoenix Contact Ltd.
Technical modifications reserved;