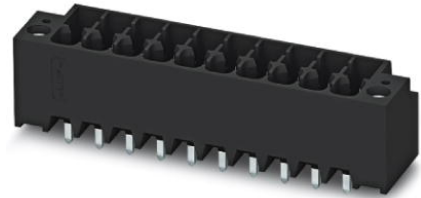



**DMCV 1,5/ 9-G1F-3,5-LR P20THR**

Order No.: 1787467

<http://eshop.phoenixcontact.co.uk/phoenix/treeViewClick.do?UID=1787467>

Header, Nominal current: 8 A, Rated voltage (III/2): 160 V, Number of positions: 9, Pitch: 3.5 mm, Color: Black, Contact surface: Tin, Assembly: SMD/THT/THR

**Commercial data**

EAN	 4 046356 597081
Pack	50
Customs tariff	85366990
Gross weight in pieces	4.78 g
Country of Origin	DE
Catalog page information	Page 177 (CC-2011)

**Product notes**

WEEE/RoHS-compliant since:  
12/07/2010



Please note that the data given here has been taken from the online catalog. For comprehensive information and data, please refer to the user documentation at <http://www.download.phoenixcontact.com>. The General Terms and Conditions of Use apply to Internet downloads.

**Technical data****Dimensions / positions**

Length	10.6 mm
Height	12 mm
Pitch	3.5 mm
Dimension a	28 mm
Number of positions	9

Pin dimensions	0,8 x 0,8 mm
Pin spacing	5.50 mm
Hole diameter	1.4 mm

#### Technical data

Range of articles	DMCV 1,5/..-G1F-THR
Insulating material group	IIIa
Rated surge voltage (III/3)	2.5 kV
Rated surge voltage (III/2)	2.5 kV
Rated surge voltage (II/2)	2.5 kV
Rated voltage (III/2)	160 V
Rated voltage (II/2)	250 V
Connection in acc. with standard	EN-VDE
Nominal current $I_N$	8 A
Nominal voltage $U_N$	160 V
Maximum load current	8 A
Insulating material	LCP
Inflammability class according to UL 94	V0
Color	Black
Nominal voltage, UL/CUL Use Group B	150 V
Nominal current, UL/CUL Use Group B	8 A

#### Certificates



Certification

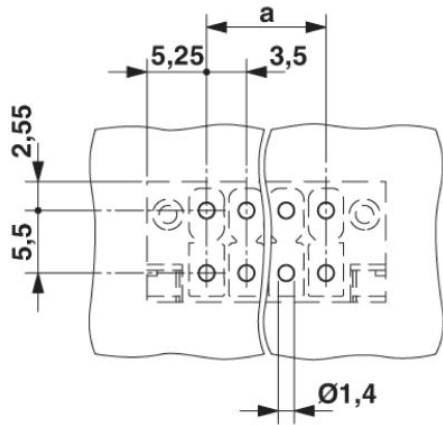
cULus Recognized

Certifications applied for:

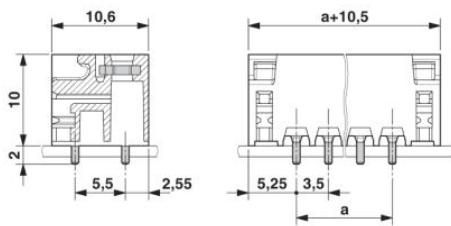
Certification Ex:

## Drawings

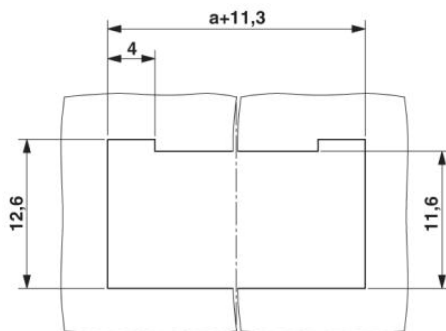
Drilling plan/solder pad geometry



Dimensioned drawing



Schematic diagram



**Address**

PHOENIX CONTACT Ltd  
Halesfield 13  
Telford / Shropshire / TF7 4PG,England  
Phone 01952 681 700  
Fax 01952 681 799  
<http://www.phoenixcontact.co.uk>



Phoenix Contact Ltd.  
Technical modifications reserved;