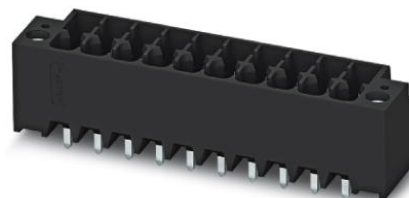


DMCV 1,5/13-G1F-3,5-LR P20THR


Order No.: 1787506



<http://eshop.phoenixcontact.co.uk/phoenix/treeViewClick.do?UID=1787506>

Header, Nominal current: 8 A, Rated voltage (III/2): 160 V, Number of positions: 13, Pitch: 3.5 mm, Color: Black, Contact surface: Tin, Assembly: SMD/THT/THR

Commercial data

EAN	 4 046356 597128
Note	Made-to-order
Pack	50
Customs tariff	85366990
Gross weight in pieces	2.22 g
Country of Origin	DE
Catalog page information	Page 177 (CC-2011)

Product notes

WEEE/RoHS-compliant since:
12/07/2010



Please note that the data given here has been taken from the online catalog. For comprehensive information and data, please refer to the user documentation at <http://www.download.phoenixcontact.com>. The General Terms and Conditions of Use apply to Internet downloads.

Technical data

Dimensions / positions

Length	10.6 mm
Height	12 mm
Pitch	3.5 mm
Dimension a	42 mm
Number of positions	13
Pin dimensions	0,8 x 0,8 mm

Pin spacing	5.50 mm
Hole diameter	1.4 mm

Technical data

Range of articles	DMCV 1,5/..-G1F-THR
Insulating material group	IIIa
Rated surge voltage (III/3)	2.5 kV
Rated surge voltage (III/2)	2.5 kV
Rated surge voltage (II/2)	2.5 kV
Rated voltage (III/2)	160 V
Rated voltage (II/2)	250 V
Connection in acc. with standard	EN-VDE
Nominal current I_N	8 A
Nominal voltage U_N	160 V
Maximum load current	8 A
Insulating material	LCP
Inflammability class according to UL 94	V0
Color	Black
Nominal voltage, UL/CUL Use Group B	150 V
Nominal current, UL/CUL Use Group B	8 A

Certificates



Certification

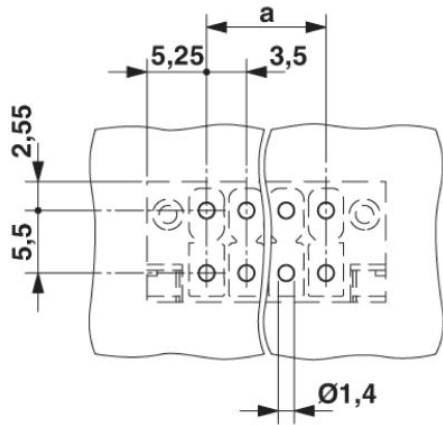
cULus Recognized

Certifications applied for:

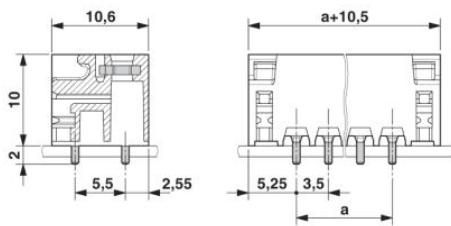
Certification Ex:

Drawings

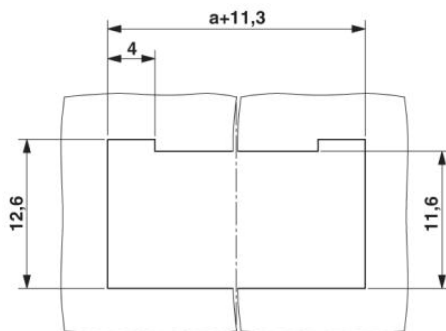
Drilling plan/solder pad geometry



Dimensioned drawing



Schematic diagram



Address

PHOENIX CONTACT Ltd
Halesfield 13
Telford / Shropshire / TF7 4PG,England
Phone 01952 681 700
Fax 01952 681 799
<http://www.phoenixcontact.co.uk>



Phoenix Contact Ltd.
Technical modifications reserved;