

PCB TERMINAL BLOCKS

5.08mm Pitch Panel Mounting Terminal Block

PCB
TERMINAL
BLOCKS

INTER-
CONNECTION

FUSES &
FUSE-
HOLDERS

LEDs &
INDICATORS

MINIATURE
SWITCHES

LIMIT &
SAFETY
SWITCHES

CONTROL
PRODUCTS

INTERFACE
MODULES &
SUPPORTS

RELAY
BASES

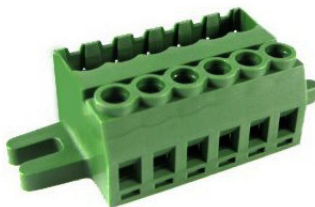
ENCLOSURES

BATTERIES

TRANS-
FORMERS

- Panel mounting pluggable terminal block header
- Compatible with CTB9208 and CTB92VJ female plugs
- Polarised mouldings
- Rising clamp terminals accept wires of 0.2mm² to 3.3mm² (24-12AWG)
- Moulded in green UL94-V0 flame retardant PA
- Captive screws

CTBA9308/P



SPECIFICATION

Rating	10A/300V
Working temperature	-40°C to +105°C
Moulding	UL94-V0 flame retardant PA66
Pin/terminal	Brass, tin plated
Wire clamp	Brass, tin plated
Screw/torque	M3 steel zinc plated, 4.5lb-inch

TYPE NO.	POLES	LENGTH	
		A (mm)	B (mm)
CTBA9308/2P	2	31.24	11.44
CTBA9308/3P	3	36.32	16.52
CTBA9308/4P	4	41.40	21.60
CTBA9308/5P	5	46.48	26.68
CTBA9308/6P	6	51.56	31.76
CTBA9308/7P	7	56.64	36.84
CTBA9308/8P	8	61.72	41.92
CTBA9308/9P	9	66.80	47.00
CTBA9308/10P	10	71.88	52.08
CTBA9308/11P	11	76.96	57.16
CTBA9308/12P	12	82.04	62.24
CTBA9308/13P	13	87.12	67.32
CTBA9308/14P	14	92.20	72.40
CTBA9308/15P	15	97.28	77.48
CTBA9308/16P	16	102.36	82.56
CTBA9308/17P	17	107.44	87.64
CTBA9308/18P	18	112.52	92.72
CTBA9308/19P	19	117.60	97.80
CTBA9308/20P	20	122.68	102.88
CTBA9308/21P	21	127.76	107.96
CTBA9308/22P	22	132.84	113.04
CTBA9308/23P	23	137.92	118.12
CTBA9308/24P	24	143.00	123.20

