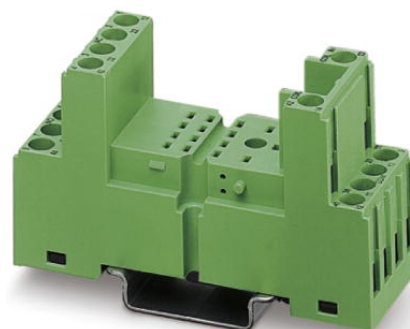



# PR2-BSC2/4X21

Order No.: 2833563



<http://eshop.phoenixcontact.net/phoenix/treeViewClick.do?UID=2833563>

Relay socket PR2-B, for industrial relay REL-IR with 2 or 4 PDT, 2/2-level version, screw connections, connection facility for input/interference suppression modules, for mounting on NS 35/7.5

Commercial data	
EAN	 4 017918 933791
Pack	10 pcs.
Customs tariff	85366990
Gross weight in pieces	0.06614 KG
Net weight per piece (exclusive packing)	0.06296 KG
Catalog page information	Page 64 (IF-2011)

### Product notes

WEEE/RoHS-compliant since:  
01/01/2005



<http://www.download.phoenixcontact.com>  
Please note that the data given here has been taken from the online catalog. For comprehensive information and data, please refer to the user documentation. The General Terms and Conditions of Use apply to Internet downloads.

## Technical data

Connection data	
Conductor cross section solid min.	0.2 mm <sup>2</sup>
Conductor cross section solid max.	1.5 mm <sup>2</sup>
Conductor cross section stranded min.	0.2 mm <sup>2</sup>

Conductor cross section stranded max.	1.5 mm <sup>2</sup>
Conductor cross section AWG/kcmil min.	26
Conductor cross section AWG/kcmil max	16
2 conductors with same cross section, solid max.	1.50 mm <sup>2</sup>
2 conductors with same cross section, stranded max.	1.50 mm <sup>2</sup>
2 conductors with same cross section, AWG max.	14
Connection method	Screw connection
Stripping length	7 mm
Screw thread	M3

#### General data

Nominal voltage U <sub>N</sub>	300 V AC/DC
Nominal current I <sub>N</sub>	12 A
Width	27 mm
Height	75 mm
Color	green
Ambient temperature (operation)	-25 °C ... 85 °C
Ambient temperature (storage/transport)	-25 °C ... 85 °C

#### Certificates / Approvals



Certification cULus Recognized

Certifications applied for:

Certification Ex:

#### Accessories

Item	Designation	Description
<b>General</b>		
2833592	EL2-P35	Relay retaining bracket, with eject function and integrated equipment marking area (8 x 25 mm), to suit relay socket PR2, for 35 mm high industrial relay
2833644	MP 2	Equipment marker, labeling surface 9 x 25 mm

### Additional products

Item	Designation	Description
<b>General</b>		
2834054	REL-IR/L- 24AC/2X21	Plug-in industrial relay with power contacts, 2 PDTs, test button, status LED, mechanical switch setting display, input voltage: 24 V AC
2834122	REL-IR/L- 24AC/4X21AU	Plug-in industrial relay with power contacts and additional hard gold plating, 4 PDTs, test button, status LED, mechanical switch setting display, coil voltage: 24 V AC
2834067	REL-IR/L-120AC/2X21	Plug-in industrial relay with power contacts, 2 PDTs, test button, status LED, mechanical switch setting display, input voltage: 120 V AC
2834135	REL-IR/L-120AC/4X21AU	Plug-in industrial relay with power contacts and additional hard gold plating, 4 PDTs, test button, status LED, mechanical switch setting display, coil voltage: 120 V AC
2834070	REL-IR/L-230AC/2X21	Plug-in industrial relay with power contacts, 2 PDTs, test button, status LED, mechanical switch setting display, input voltage: 230 V AC
2834148	REL-IR/L-230AC/4X21AU	Plug-in industrial relay with power contacts and additional hard gold plating, 4 PDTs, test button, status LED, mechanical switch setting display, coil voltage: 230 V AC
2834151	REL-IR/LDM- 12DC/2X21	Pluggable industrial relay with power contacts, 2 PDT, test button, status LED, free-wheeling diode, mechanical switch position indicator, polarity <b>A1-</b> , <b>A2+</b> , input voltage 12 V DC
2834193	REL-IR/LDM- 12DC/4X21AU	Pluggable industrial relays with power contacts and additional hard gold plating, 4 PDT, test button, status LED, free-wheeling diode, mechanical switch position indicator, polarity <b>A1-</b> , <b>A2+</b> , coil voltage: 12 V DC
2834164	REL-IR/LDM- 24DC/2X21	Pluggable industrial relays with power contacts, 2 PDT, test button, status LED, free-wheeling diode, mechanical switch position indicator, polarity <b>A1-</b> , <b>A2+</b> , input voltage 24 V DC
2834203	REL-IR/LDM- 24DC/4X21AU	Pluggable industrial relays with power contacts and additional hard gold plating, 4 PDT, test button, status LED, free-wheeling diode, mechanical switch position indicator, polarity <b>A1-</b> , <b>A2+</b> , coil voltage: 24 V DC
2834177	REL-IR/LDM- 48DC/2X21	Pluggable industrial relays with power contacts, 2 PDT, test button, status LED, free-wheeling diode, mechanical switch position indicator, polarity <b>A1-</b> , <b>A2+</b> , input voltage 48 V DC
2834216	REL-IR/LDM- 48DC/4X21AU	Pluggable industrial relays with power contacts and additional hard gold plating, 4 PDT, test button, status LED, free-wheeling diode, mechanical switch position indicator, polarity <b>A1-</b> , <b>A2+</b> , coil voltage: 48 V DC
2834180	REL-IR/LDM-110DC/2X21	Pluggable industrial relays with power contacts, 2 PDT, test button, status LED, free-wheeling diode, mechanical switch position indicator, polarity <b>A1-</b> , <b>A2+</b> , input voltage 110 V DC

2834229	REL-IR/LDM-110DC/4X21AU	Pluggable industrial relays with power contacts and additional hard gold plating, 4 PDT, test button, status LED, free-wheeling diode, mechanical switch position indicator, polarity <b>A1-</b> , <b>A2+</b> , coil voltage: 110 V DC
2834012	REL-IR/LDP- 12DC/2X21	Pluggable industrial relays with power contacts, 2 PDT, test button, status LED, free-wheeling diode, mechanical switch position indicator, polarity <b>A1+</b> , <b>A2-</b> , input voltage 12 V DC
2834083	REL-IR/LDP- 12DC/4X21AU	Pluggable industrial relays with power contacts and additional hard gold plating, 4 PDT, test button, status LED, free-wheeling diode, mechanical switch position indicator, polarity <b>A1+</b> , <b>A2-</b> , coil voltage: 12 V DC
2834025	REL-IR/LDP- 24DC/2X21	Pluggable industrial relays with power contacts, 2 PDT, test button, status LED, free-wheeling diode, mechanical switch position indicator, polarity <b>A1+</b> , <b>A2-</b> , input voltage 24 V DC
2834096	REL-IR/LDP- 24DC/4X21AU	Pluggable industrial relays with power contacts and additional hard gold plating, 4 PDT, test button, status LED, free-wheeling diode, mechanical switch position indicator, polarity <b>A1+</b> , <b>A2-</b> , coil voltage: 24 V DC
2834041	REL-IR/LDP-110DC/2X21	Pluggable industrial relays with power contacts, 2 PDT, test button, status LED, free-wheeling diode, mechanical switch position indicator, polarity <b>A1+</b> , <b>A2-</b> , input voltage 110 V DC
2834119	REL-IR/LDP-110DC/4X21AU	Pluggable industrial relays with power contacts and additional hard gold plating, 4 PDT, test button, status LED, free-wheeling diode, mechanical switch position indicator, polarity <b>A1+</b> , <b>A2-</b> , coil voltage: 110 V DC
2834960	REL-IR/LDP-125DC/2X21	Pluggable industrial relay with power contacts, 2 PDT, test button, status LED, free-wheeling diode, mechanical switch position indicator, polarity <b>A1+</b> , <b>A2-</b> , input voltage 125 V DC
2834313	REL-IR/LDP-125DC/4X21AU	Pluggable industrial relay with power contacts and additional hard gold plating, 4 PDTs, test button, status LED, free-wheeling diode, mechanical switch position indicator, polarity <b>A1+</b> , <b>A2-</b> , coil voltage: 125 V DC
2834957	REL-IR/LDP-220DC/2X21	Pluggable industrial relay with power contacts, 2 PDT, test button, status LED, free-wheeling diode, mechanical switch position indicator, polarity <b>A1+</b> , <b>A2-</b> , input voltage 220 V DC
2834973	REL-IR/LDP-220DC/4X21AU	Pluggable industrial relay with power contacts and additional hard gold plating, 4 PDTs, test button, status LED, free-wheeling diode, mechanical switch position indicator, polarity <b>A1+</b> , <b>A2-</b> , coil voltage: 220 V DC

**Address**

PHOENIX CONTACT Ltd  
Halesfield 13  
Telford Shropshire TF7 4PG,GB  
Phone 01952 681 700  
Fax 01952 681 799  
<http://www.phoenixcontact.co.uk>



© 2013 Phoenix Contact  
Technical modifications reserved;