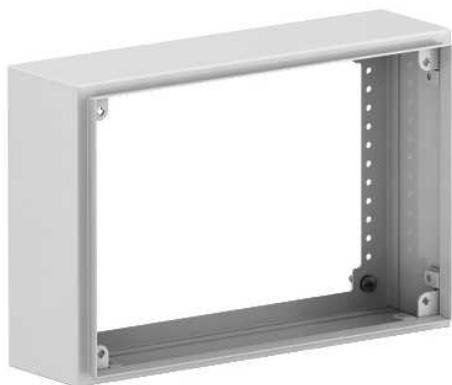


# NSYAES248SB

Metal extension box H200xW400xD80 IP66  
IK10 RAL 7035



## Main

Commercial Status	Commercialised
Range	Spacial SBM Spacial SBMC
Device application	Multi-purpose
Category	Extension box
Enclosure nominal height	200 mm
Enclosure nominal width	400 mm
Enclosure nominal depth	80 mm
Device composition	4 x screw 1 x body
Body type	Single piece body folded and welded
Cover fixing	Half turn metal screw
Lock type	Inside the enclosure: PZ2 screwdriver captive screw

## Complementary

Material	Sheet steel
Surface finish	Polyester powder
Colour	Grey ( RAL 7035 )
IP degree of protection	IP66 IEC 60529 for 1 device
IK degree of protection	IK10 conforming to IEC 62262
Ambient air temperature for storage	-35...60 °C
Operating temperature	-35...80 °C