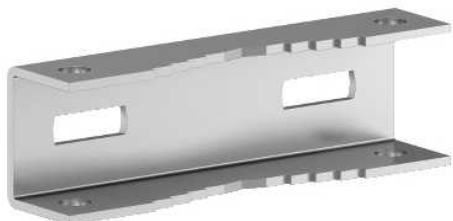


# NSYSFPSC15

Post fixing device WM Spacial, length 150. For post max 675. Max. Load:100kg.



## Main

Commercial Status	Commercialised
Range	Spacial SBM
Category	Post fixing device
Application	Multi-purpose
Mounting location	Rear of enclosure
Product compatibility	SBM box SBMC box SBMB box
Device composition	2 strip 2 support rail Fixing elements
Quantity per set	Set of 1

## Complementary

Material	Galvanised steel
Fixing mode	By fixing element - screw type M8 - to the inserts in the rear of the enclosure location Maximum diameter 215 mm Minimum diameter 150 mm
Permanent permissible load	100 kg
Height	45 mm
Width	145 mm
Depth	32.5 mm

The information provided in this documentation contains general descriptions and/or technical characteristics of the performance of the products contained herein. This documentation is not intended as a substitute for and is not to be used for determining suitability or reliability of these products for specific user applications. It is the duty of any such user or integrator to perform the appropriate and complete risk analysis, evaluation and testing of the products with respect to the relevant specific application or use thereof. Neither Schneider Electric Industries SAS nor any of its affiliates or subsidiaries shall be responsible or liable for misuse of the information contained herein.