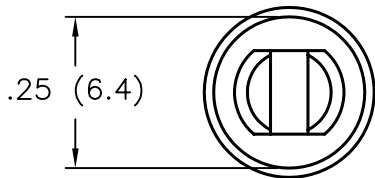
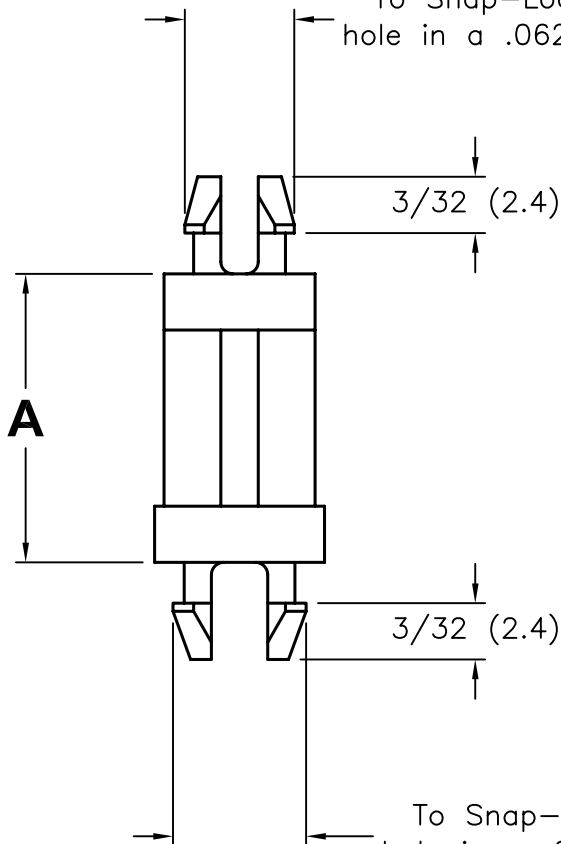


DCP #	REV	DESCRIPTION	DRAWN	DATE	CHECKD	DATE	APPRVD	DATE
1272	B	Clarified Mtg Holes	JWM	4/9/03	JC	4/9/03	JC	4/9/03
1865	C	RoHS ADDED	DCM	10/17/05	JWM	10/18/05	JWM	10/18/05

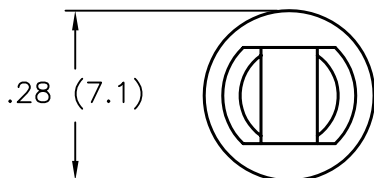


To Snap-Lock in a  $.156^{\pm.003}$  [4.00 $\pm$ 0.08] Dia. hole in a .062 [1.57] Nom. Thk. Board/Chassis



Item No.	"A" $\pm.015$ [0.4]
8476-0422	3/16 [4.8]
8476-0423	1/4 [6.4]
8476-0424	3/8 [9.5]
8476-0425	1/2 [12.7]
8476-0426	5/8 [15.9]
8476-0427	3/4 [19.1]
8476-0428	7/8 [22.2]
8476-0429	1 [25.4]

To Snap-Lock in a  $.187^{\pm.003}$  [4.75 $\pm$ 0.08] Dia. hole in a .062 [1.57] Nom. Thk. Board/Chassis



NOTES:

- MATERIAL: NYLON 6/6
- COLOR: NATURAL

SPC-F004.DWG

<b>TOLERANCES:</b> Tolerances Unless Otherwise Specified: .XX $\pm$ .010 .XXX $\pm$ .005 Frac $\pm$ 1/64	DRAWN BY: Jeff McVicker	DATE: 3/7/00	DRAWING TITLE: Support Post			
	CHECKED BY: John Cole	DATE: 3/14/00	SIZE A	DWG. NO. TA-217	ELECTRONIC FILE TA-217.dwg	REV C
	APPROVED BY: Daniel Carey	DATE: 4/5/00	SCALE: NTS		U.O.M.: INCHES [mm]	SHEET: 1 OF 1