

# DIGITAST

## Microminiature SPDT, Key Switches



### Features/Benefits

- High reliability/long life
- Designed for low level switching
- Ready to implement on PCB
- Latching function available
- Several button options
- RoHS compliant and compatible

### Typical Applications

- Medical
- Instrumentation
- Industrial electronics
- Audio electronics

### Construction

FUNCTION: momentary or push-push  
 CONTACT ARRANGEMENT: 1 change over contact SPDT, NO  
 MODE OF SWITCHING: Non-shorting  
 DISTANCE BETWEEN BUTTON CENTERS:  
 HORIZONTAL MINIMUM 12,7 (Q.500) or 17,78 (Q.700)  
 VERTICAL MINIMUM 17,78 (Q.700)  
 TERMINALS: PC pins  
 MOUNTING: Soldering, centering pins

### Mechanical

TOTAL TRAVEL:  $\leq 3$  (Q018)  
 SWITCHING TRAVEL: 1,5 (Q0591)  
 LATCHING TRAVEL: 1,8 (Q0709)  
 OPERATING FORCE: 1.5 +/- 0.5 N (150 +/- 50 grams)

### Process

SOLDERABILITY: Max. soldering time and temperature: 5s at 260°C

### Electrical

SWITCHING POWER MAX.: 240mW DC  
 SWITCHING VOLTAGE MAX.: 24 V DC  
 SWITCHING CURRENT MAX.: 10mA DC  
 CARRYING CURRENT AT 20°C (push-push version): 100mA  
 DIELECTRIC STRENGTH (50Hz, 1 min): 500V  
 OPERATING LIFE with or without max. switching power  
 Momentary:  $\geq 5 \times 10^6$  operations  
 Push-push:  $\geq 5 \times 10^6$  operations  
 CONTACT RESISTANCE: Initial  $\leq 50$  m $\Omega$   
 After  $5 \times 10^6$  operations:  $\leq 100$  m $\Omega$   
 INSULATION RESISTANCE:  $\geq 10^9 \Omega$   
 CAPACITANCE at f= 10kHz:  $\leq 0.8$  pF  
 BOUNCE TIME:  $\leq 2.5$  ms  
 Operating speed 400mm/s (15.75/s)

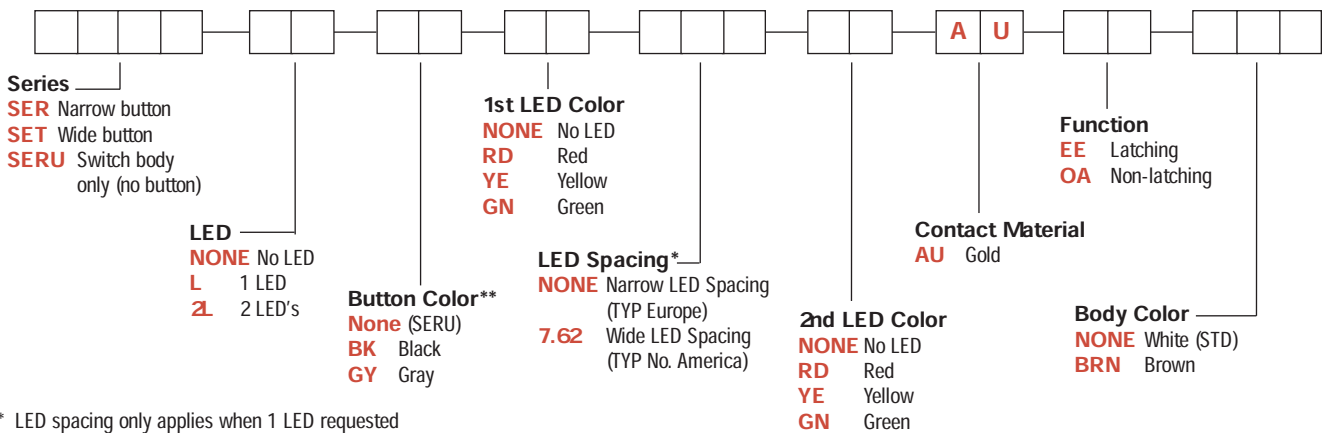
### Environmental

OPERATING TEMPERATURE: -25°C to 85°C.

### How To Order

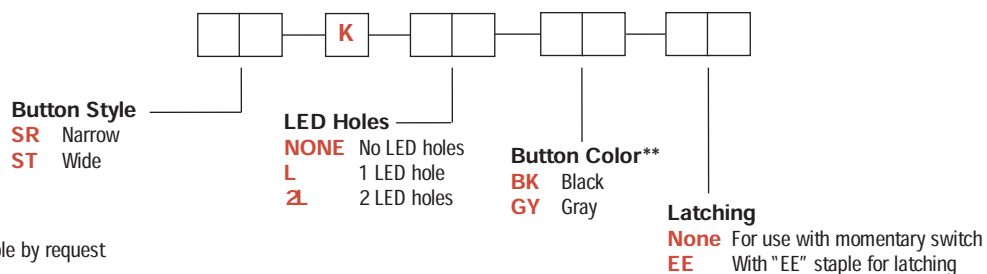
Our easy build-a-switch concept allows you to mix and match options to create the switch you need. To order, select desired option from each category and place it in the appropriate box.

#### Switch



\* LED spacing only applies when 1 LED requested

#### Button



\*\* Additional button colors available by request

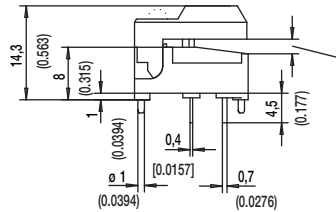
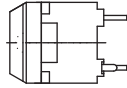
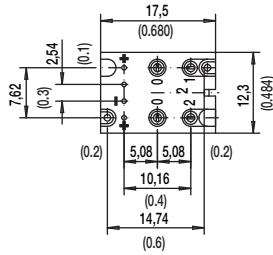


Dimensions are shown: mm (inch)  
 Specifications and dimensions subject to change

# DIGITAST Microminiature SPDT, Key Switches

DESIGNATION

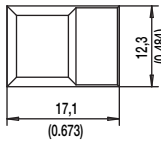
## SER NARROWBUTTON



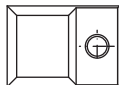
Total travel  
3 (0.118)  
Switching travel 1.5 (0.0591)



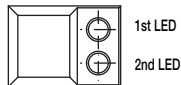
SER



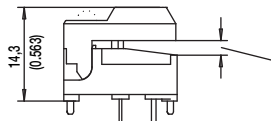
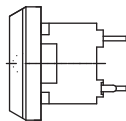
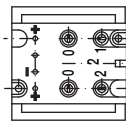
SERL



SER2L



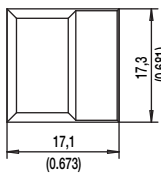
## SET WIDE BUTTON



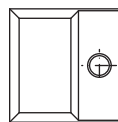
Total travel  
3 (0.118)  
Switching travel 1.5 (0.0591)



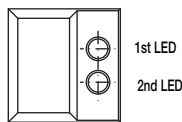
SET



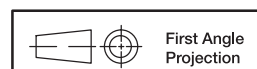
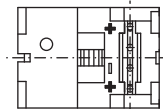
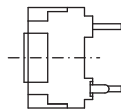
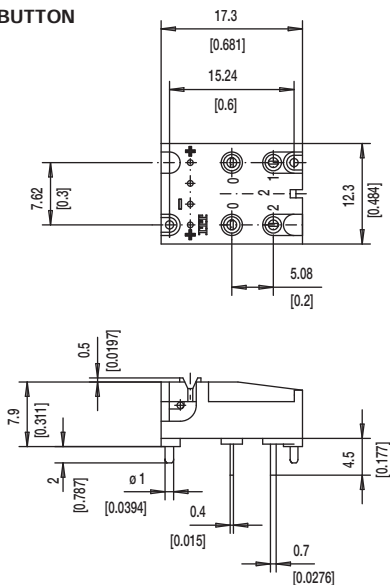
SETL



SET2L



## SERU NO BUTTON



Dimensions are shown: mm (inch)  
Specifications and dimensions subject to change

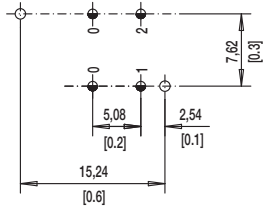


# DIGITAST

## Microminiature SPDT, Key Switches

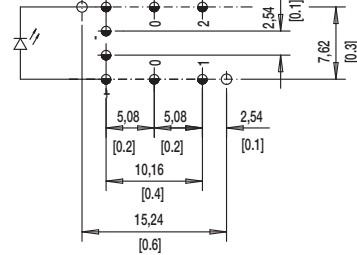
### LED

#### NONE NO LED

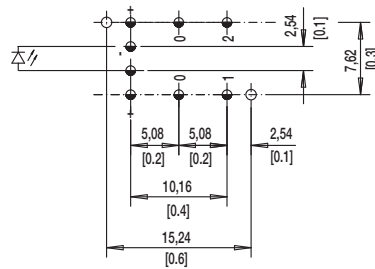


#### L 1 LEDs

##### 7.62mm Spacing (TYP No. America)

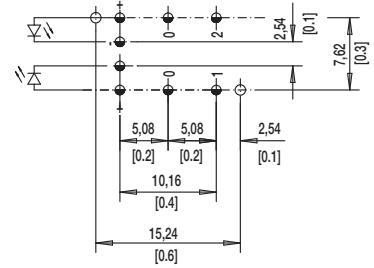


##### NARROW SPACING (TYP EUROPE)



TOP VIEW OF PCB

#### 2L 2LEDs



⌀ 1.0±0.1 (0.0394±0.00349)

⌀ 1.1±0.05 (0.0433±0.00197)

### BUTTON COLOR

**BK** BLACK

**GY** GRAY

Other button colors available by request [red (RD) green (GN) white (WH) yellow (YE), blue (BU), orange (OG)]

### LED COLOR

OPTION CODE	COLOR
<b>NONE</b>	Models without LED
<b>RD</b>	Red
<b>GN</b>	Green
<b>YE</b>	Yellow

### CONTACT MATERIAL

OPTION CODE	MATERIAL
<b>AU</b>	Gold

### FUNCTION

OPTION CODE	COLOR	SCHEMATIC
<b>OA</b>	Momentary	
<b>EE</b>	Push-Push	



Dimensions are shown: mm (inch)  
Specifications and dimensions subject to change

www.ck-components.com



Key Switches