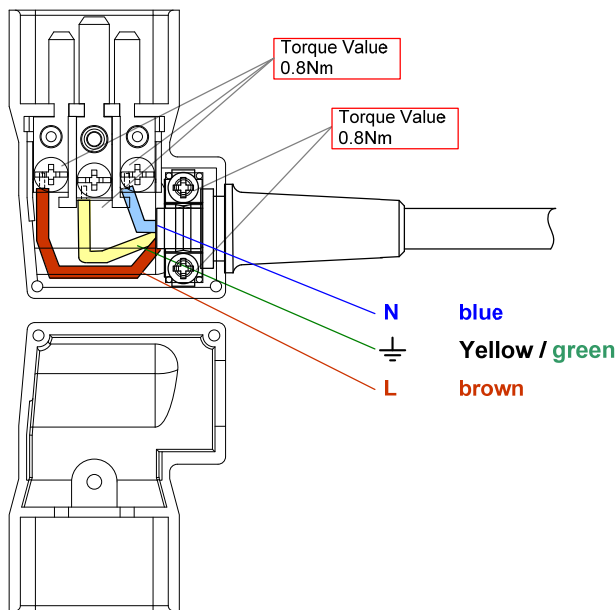
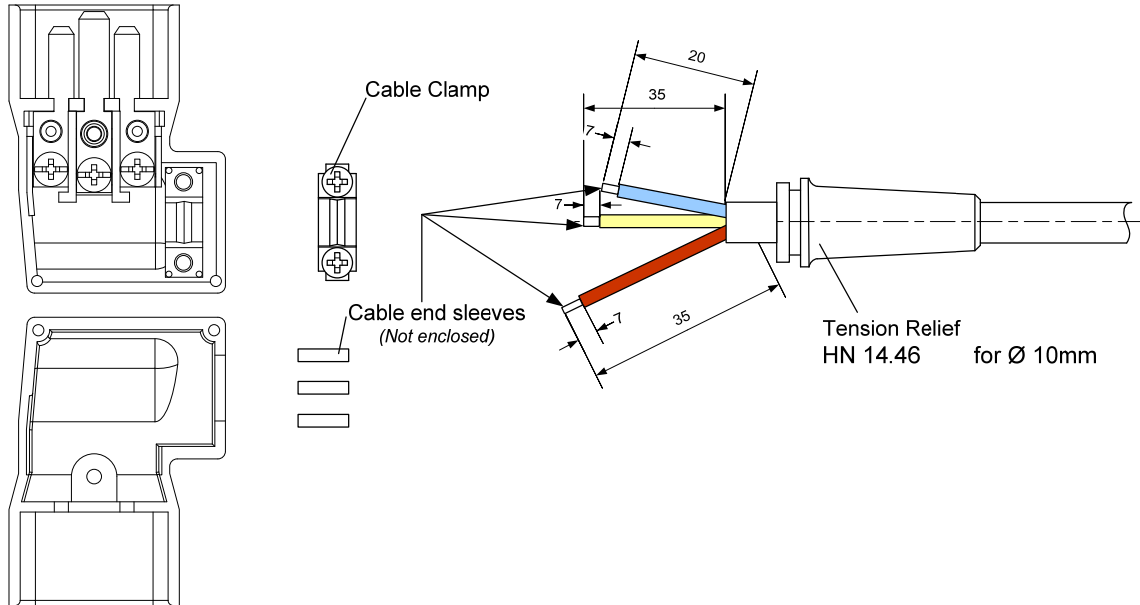


1. Wiring for 4789



Cable Type:

According to IEC60227-5 or IEC60245-4
Type 60227 IEC53
Type 60245 IEC53

SJT

Max. Cable Diameter:

Ø 10mm with Tension Relief

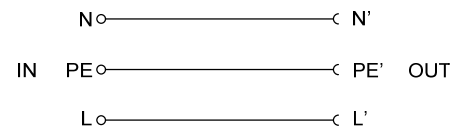
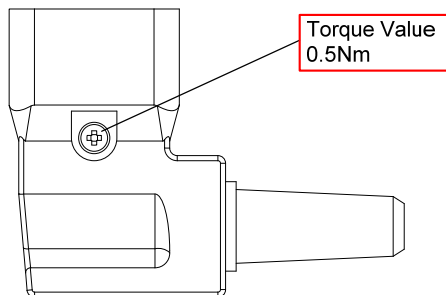
Max. Wire Size:

3x1.5mm² for 16A
3x14AWG for 21A

Min. Wire Size:

3x1.0mm² for 16A
3x16AWG for 21A

if cord has a length exceeding 2m, nominal cross-sectional areas shall be 1.5mm²/14AWG



Wiring 4789					0115.0051	
Created date:	Created by:	Released date:	Released by:	Notification-Nr.	Index	Page
05.05.2011 11:28:43	sha	25.04.2012	sha	23436	b	1 von 2

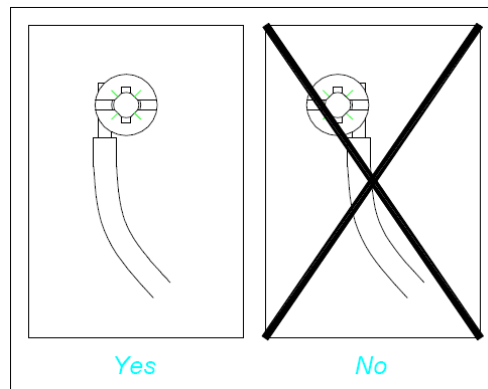
2. Assembly Instruction

Disconnect power before wiring.

Keep removed piece parts at a safe place to have them ready for reassembling.

1. Loosen cover screw and remove cover.
2. Loosen strain relief screws and remove strain relief.
3. Insert cord into PVC-guard.
4. Remove outer jacket on cord max. 35 mm. Make sure not to hurt insulation of single conductors.
5. Strip bare each copper conductor 7 mm and crimp on multicore cable ends. Do not strip more than 7 mm.
6. Loosen terminal screws but do not remove screws.

For connecting wires to terminals insert bare ends of conductors from left side of terminal screw according to figure below. Make sure that no copper strands splice off when connecting conductors to clamps.



7. Connect green or green/yellow (ground) wire to center clamp marked with ground symbol.
8. Connect blue (white or light grey) wire to clamp marked „N“ (neutral).
9. Connect brown (black / “hot”) wire to clamp marked „L“ (line).
10. Tighten all wire clamp screws with a torque of 0,8 Nm.
11. Insert shoulder of PVC-guard into cutout of base unit.
12. Assemble strain relief bar over cut-off end of outer jacket of the cord and tighten strain relief screws with a torque of 0,8 Nm.
13. Assemble cover unit and tighten cover screw with a torque of 0,5 Nm.

**Warning: Failure to wire as instructed may cause personal injury or damage to device or equipment.
To be installed or checked by an qualified person only.
For factory assembly only.**

Wiring 4789					0115.0051	
Created date:	Created by:	Released date:	Released by:	Notification-Nr.	Index	Page
05.05.2011 11:28:43	sha	25.04.2012	sha	23436	b	2 von 2