

**Accessories Multimode Relay MT**

- Snap-on mounting on DIN-rail
- Screw mounting
- Pozidrive screws with rising clamp terminals
- Logical layout of input-/output connections
- White marking area
- Din-rail sockets and accessories: RoHS compliant (Directive 2002/95/EC)



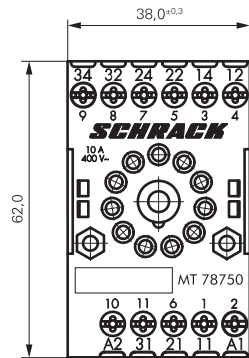
F0235-B

**MT DIN-rail sockets with screw-type terminals**

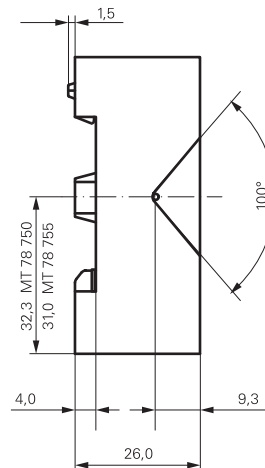
**MT 78 750** MT3 DIN-rail socket with screw-type terminals, 11-pin  
**MT 78 755** MT2 DIN rail socket with screw type terminals, 8-pin



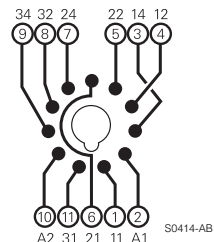
F0103-B



S0311-BA

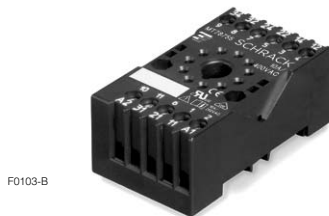


MT 78 750

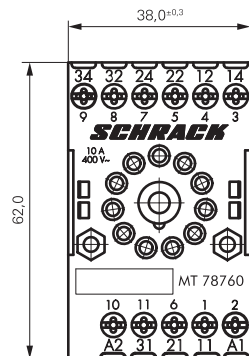


S0414-AB

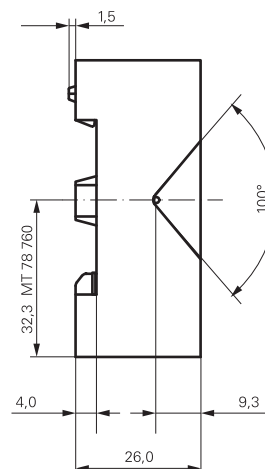
**MT 78 760** MT3 DIN-rail socket with screw-type terminals, 11-pin



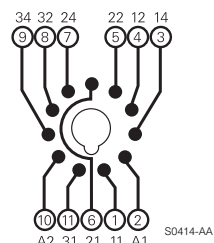
F0103-B



S0311-BB



MT 78 760



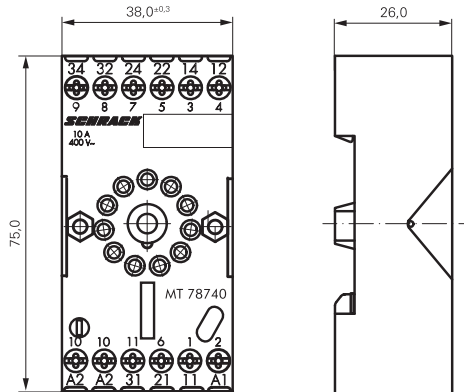
S0414-AA

**Accessories Multimode Relay MT (Continued)**

**MT 78 740** MT3 DIN-rail socket with screw-type terminals, 11-pin  
**MT 78 745** MT2 DIN rail socket with screw type terminals, 8-pin



F0200-B



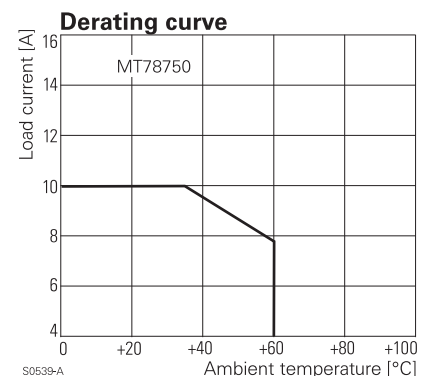
Socket system MT 78 740 and MT 78 745  
 ■ 8/11 pin socket for MT2 / MT3  
 ■ Double A2 screw for simple further connection of coil supply

S0366-A

**Approvals**

VDE REG.-Nr. 6182, c us E135149

Technical data		MT 78 750/755/760/740/745
Rated voltage / max. switching voltage AC		240 / 400 VAC
Rated current		10 A
Dielectric strength coil-contact circuit	open contact circuit	2500 V <sub>rms</sub>
	adjacent contact circuits	1500 V <sub>rms</sub>
		2500 V <sub>rms</sub>
Clearance / creepage coil-contact circuit		≥ 2.8/4 mm
Material group of insulation parts		IIIa
Insulation to IEC 60664-1		
Type of insulation coil-contact circuit		basic
open contact circuit		functional
adjacent contact circuits		basic
Rated insulation voltage		250 V
Pollution degree		2
Rated voltage system		230 / 400 V
Overvoltage category		III
RoHS - Directive 2002/95/EC		
DIN-rail sockets and retainers:		compliant
Ambient temperature range		-20...+80°C
Terminals		screw
Terminal screw torque acc. IEC 61984		0.5 Nm
max.		0.7 Nm
Wire cross section		
single wire		2 x 2.5 mm <sup>2</sup>
fine wire		2 x 2.5 mm <sup>2</sup>
with bootlace crimp (DIN 46228/1)		2 x 1.5 mm <sup>2</sup>
Insertion cycles		A (10)
Max. Insertion Force total		100 N
Mounting distance		≥ 0, dense packing
Weight		
MT 78 750/760		54 g
MT 78 755		47 g
MT 78 740		62 g
MT 78 745		56 g
Packaging unit		25 pcs



S0539-A

**DIN-rail sockets with screw-type terminals**

Type		Part Number
<b>MT 78 750</b>	DIN-rail socket with screw-type terminals 11-pin	1415035-1
<b>MT 78 755</b>	DIN-rail socket with screw-type terminals 8-pin	3-1415035-1
<b>MT 78 760</b>	DIN-rail socket with screw-type terminals 11-pin	8-1415034-1
<b>MT78 740</b>	DIN-rail socket with screw-type terminals, 11-pin	8-1393163-3
<b>MT78 745</b>	DIN-rail socket with screw-type terminals, 8-pin	8-1393163-4

**Accessories Multimode Relay MT (Continued)**

**Accessories for MT 78 750, MT 78 755, MT 78 760, MT 78 740, MT 78 745**

Type	Part Number
<b>MT 28 800</b> Metal retaining clip MT	8-1393163-0

**LED and Protection modules for MT 78 740, MT 78 745**

Type	Part Number
<b>MTM TO 0A0</b> Protection diode 1N4007 (A1+, A2-)	7-1393163-6
<b>MTM U0 730</b> RC-network 110...230 VAC	7-1393163-8

LED	
<b>MTM L0 024</b> red LED 24 VAC / VDC	7-1393163-4

**Function modules for MT 78 740, MT 78 745**

Type	Part Number
<b>MTM Z0 W00</b> Delay ON	7-1393163-9
<b>MTM F0 W00</b> Multifunction	7-1393163-3

**Technical data - Function modules**

Nominal voltage	24...240 VDC / VAC
Mains frequency	48...63 Hz
Precision of time setting	+ 0,5 %
Readiness for repetition	≤ 0,5 % or 5 ms
Influence of temperature	≤ 0,1 %/°C
Time range switchable	0,05s...240h in 8 ranges
RoHS - Directive 2002/95/EC	compliant as per product date code 0515
Ambient temperature	-25...+55 °C

**Function modules for MT 78 740, MT 78 745**

Function	U/t	R
Delay ON		
Delay OFF		
single shot leading edge		
single shot trailing edge		
Delay ON triggered by signal contact		
single shot		
flasher starting with pause		
flasher starting with pulse		



F0201-B



F0203-B

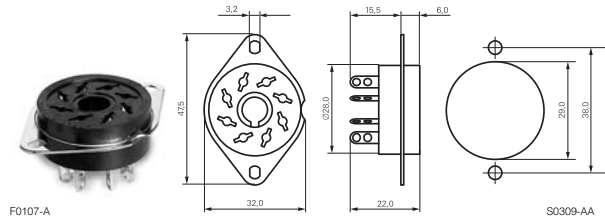


F0204-B

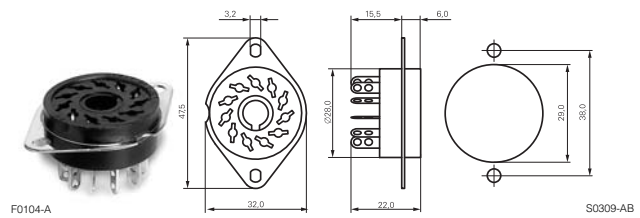
**Accessories Multimode Relay MT (Continued)**

**MT sockets for PCB and with solder terminals MT 78 602/603/612/613**

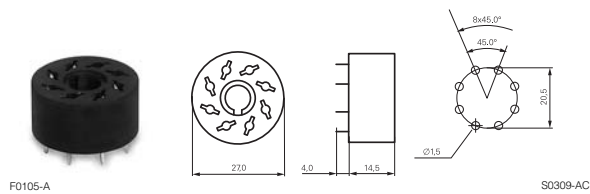
**MT 78 612** Socket 8-pin with solder terminals



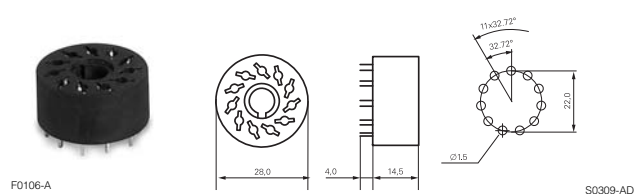
**MT 78 613** Socket 11-pin with solder terminals



**MT 78 602** Socket 8-pin with PCB terminals



**MT 78 603** Socket 11-pin with PCB terminals



Technical data		MT 78 602/603/612/613
Rated voltage / max. switching voltage AC		240 / 400 VAC
Rated current		10 A
Dielectric strength coil-contact circuit		2500 V <sub>rms</sub>
open contact circuit		1500 V <sub>rms</sub>
adjacent contact circuits		2500 V <sub>rms</sub>
Clearance / creepage coil-contact circuit		≥ 2.8/4 mm
Material group of insulation parts		IIIa
Insulation to IEC 60664-1		
Type of insulation coil-contact circuit		basic
open contact circuit		functional
adjacent contact circuits		basic
Rated insulation voltage		250
Pollution degree		2
Rated voltage system		230 / 400
Overvoltage category		III
RoHS - Directive 2002/95/EC		
MT 78 602, MT 78 603		compliant as per product date code 0517
MT 78 612, MT 78 613		compliant as per product date code 0543
Ambient temperature range		-40...+70°C
Terminals		pcb, solder terminals
Insertion cycles		A (10)
Max. Insertion Force total		100 N
Mounting distance		≥ 0, dense packing
Resistance to soldering heat		270°C / 10 s
Weight		7 g
Packaging unit		25 pcs

**Sockets with solder and PCB terminals**

Type	Part Number
<b>MT 78 612</b> Socket 8-pin with solder terminals	7-1415043-1
<b>MT 78 613</b> Socket 11-pin with solder terminals	8-1415043-1
<b>MT 78 602</b> Socket 8-pin with PCB terminals	9-1415043-1
<b>MT 78 603</b> Socket 11-pin with PCB terminals	1415044-1