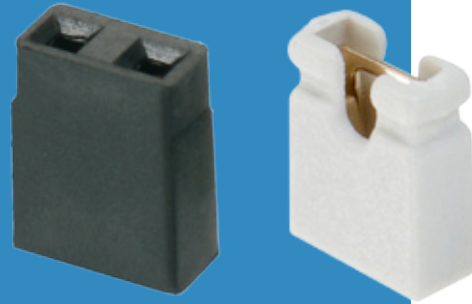


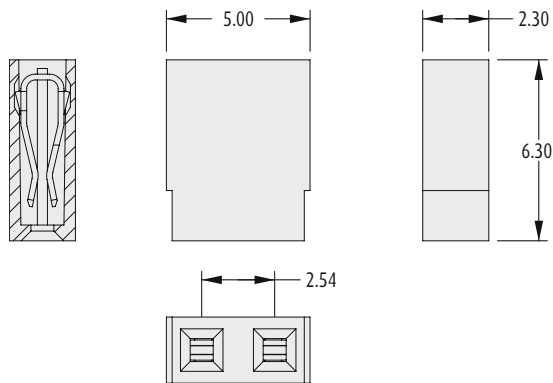
M20 Connectors

Jumper Sockets

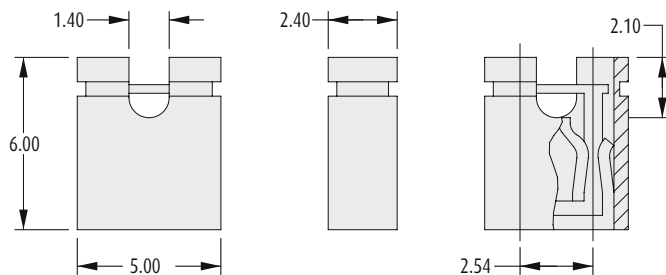
- ❖ Suitable for use with pin headers shown on pages 146 to 152.
- ❖ Can be fitted by hand, giving an alternative on-board programming method to DIP switches.
- ❖ Open top for use with test probes.
- ❖ End and side stackable.
- ❖ Choice of colours available.
- ❖ Multi-usage socket provides up to 300 operations (Gold).
- ❖ Twin beam contact for cost-effective reliability.



HIGH REL, MULTI-USAGE



HIGH FORCE, SINGLE OPERATION



HOW TO ORDER

SERIES CODE

M75 XX - XX

FINISH

05	Gold	
46	Tin	

HIGH REL		SINGLE OPERATION	
65	Grey	81	Red
66	Red	82	Black
67	Black	83	Blue
71	Blue		

All dimensions in mm.

2.54mm (.100") PITCH