

DRG. No. F 60203		SWITCH K2/3TMA-123	
DRAWN R.M.F.	TRACED	DATE 26-10-94	SCALE 2:1

THIRD ANGLE
PROJECTION

FINAL ASSEMBLY

DO NOT SCALE

© THIS DRAWING IS THE PROPERTY OF BURGESS MICRO SWITCH CO. LTD.
AND MUST NOT BE USED OR COPIED, ENTIRELY OR IN PART, WITHOUT THE
PERMISSION OF BURGESS MICRO SWITCH CO. LTD.

No. Off	ITEM No.	DRG. No.	DESCRIPTION
1	01	MS 68173	TOK 3T DIFF LOCK
1	02	MS 68135	3 POSITION BARREL
1	03	MS 68139	BEZEL
1	04	MS 68140	LOCK NUT
1	05	MS 68141	TAB WASHER
1	06	MS 68178	INDEX CAM
2	07	MS 68182	INDEX SHOE
2	08	MS 68184	INDEX SPRING
1	09	MS 68437	SEMS SCREW
2	10	MS 68197	PACKET
1	11	MS 68221	BACK PLATE
1	12	MS 68193	NYLON SCREW
1	13	MS 68194	FIBRE WASHER
1	14	MS 68198	CAM
1	15	MS 68213	INLAID TERMINAL
1	16	MS 68217	ARM ASSEMBLY
1	17	MS 68211	INLAID TERMINAL
1	18	MS 68215	ARM ASSEMBLY

SPECIFICATION

VIEW ON ARROW "B"

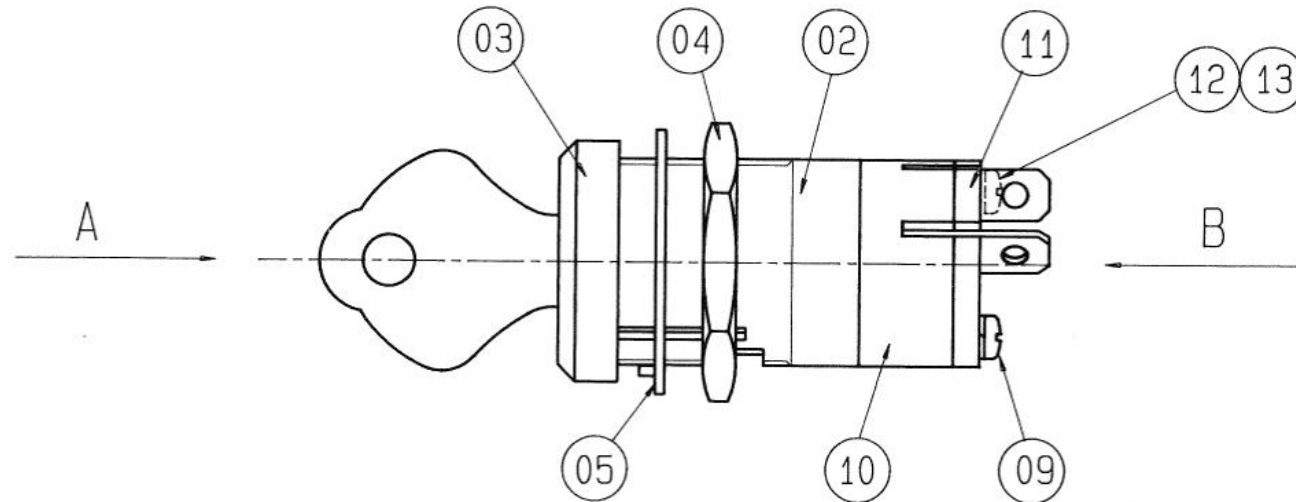
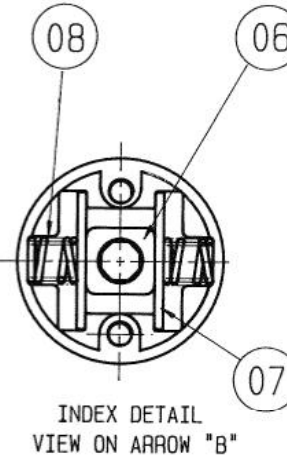
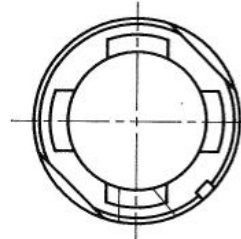
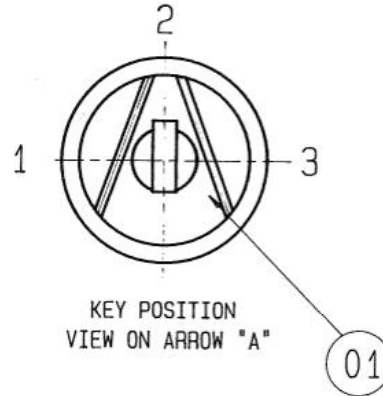
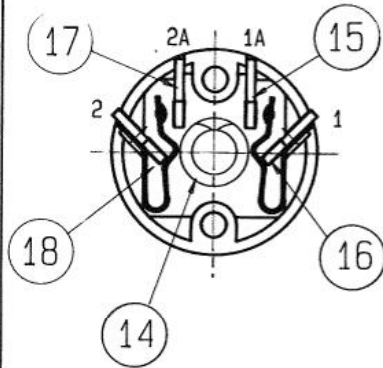


DIAGRAM OF CONNECTIONS

CON POS	1-1A		2-2A	
	1	2	1	2
1		X		
2				
3	X			

BURGESS MICRO SWITCH COMPANY LTD.
DUKES WAY, TEAM VALLEY, GATESHEAD,
TYNE & WEAR, NE11 0UB.
Tel: 091 4877171 Telex: 53229 Fax: (3) 091 4871610

ISSUE No.	DATE	BY	REASON
2	26-10-94		
3	27-05-13	(EA-EH13-033)	

THIS DRAWING MUST ONLY BE AMENDED ON CAD SYSTEM

ALL DIMENSIONS SPECIFIED IN MILLIMETRES
TOLERANCES UNLESS STATED:-
NO DECIMAL PLACE ± 0.5 1 DECIMAL PLACE ± 0.25
2 DECIMAL PLACES ± 0.15 ANGULAR ± 1°

APPROVED	
DRAWING OFFICE	PRODUCTION ENG.
PROJECT ENG.	QUALITY CONTROL

SWITCH	DRG. No.
K2/3TMA-123	F 60203