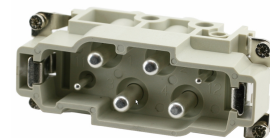


heavy|mate® K - C146

Part No. C146 10A006 100 13

Series Heavy duty connectors heavy|mate® - C 146

Subseries Heavy duty connector heavy|mate® K - C146



View represents all available contact positions.

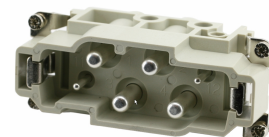
COMMON CHARACTERISTICS		
No. of contacts		6 + PE
Type of contact		Screw contact
Sex of Contact		Pin
ELECTRICAL CHARACTERISTICS		
Rated voltage	DIN EN 60664-1 / IEC 60664-1	830V
Rated impulse voltage	DIN EN 60664-1 / IEC 60664-1	8000V
Rated current at 40°C		siehe Deratingkurven A
Installation category	DIN EN 60664-1 / IEC 60664-1	III
Insulation group	DIN EN 60664-1 / IEC 60664-1	II
Insulation resistance	DIN EN 60512-2, Test 3a / IEC 60512-2, Test 3a	≥ 10 ¹⁰
Contact resistance	DIN EN 60512-2, Test 2a / IEC 60512-2 Test 2a	< 5 m
Pollution degree	DIN EN 60664-1 / IEC 60664-1	3
CLIMATICAL CHARACTERISTICS		
Climatic category	DIN EN 60068-1 / IEC 60068-1	40 / 125 / 21
MECHANICAL CHARACTERISTICS		
Mechanical lifetime		≥ 500 mating cycles
MATERIALS		
Contacts		Cu-alloy
Insert		PC
Colour		grey
Contact plating		silver plated / gold plated
Male contact		CuZn
Female contact		CuZn
FURTHER CHARACTERISTICS		
Termination		screw
Wire gauge		1,5mm ² - 16mm ²
Wire gauge (AWG)		16 - 6
Flammability	UL 94	V-0

heavy|mate® K - C146

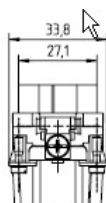
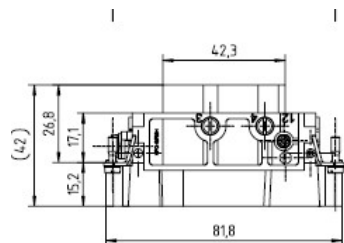
Part No. C146 10A006 100 13

Series Heavy duty connectors heavy|mate® - C 146

Subseries Heavy duty connector heavy|mate® K - C146



View represents all available contact positions.



Drawing Dimensions in mm (Inch)

26.06.2013