

Turned contacts turned crimp contact, male for wire gauge 0,5mm²

Part No. VN01 025 0035 1C

Series Contacts

Subseries Contact Turned contacts



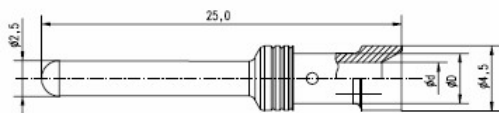
COMMON CHARACTERISTICS		
Contact diameter		2,5mm
Wire gauge from		0,5mm ²
Wire gauge (AWG) from		20
Packaging / supplied as		Single contact
No. of pieces		100
Sex of Contact		Pin
Type of contact		Turned crimp contact
CLIMATICAL CHARACTERISTICS		
Upper temperature		+ 125 °C
Lower temperatur		- 40 °C
MECHANICAL CHARACTERISTICS		
Mechanical lifetime		500 mating cycles

Turned contacts turned crimp contact, male for wire gauge 0,5mm²

Part No. VN01 025 0035 1C

Series Contacts

Subseries Contact Turned contacts



Drawing Dimensions in mm (Inch)

24.06.2013