

turned crimp contact, female for wire gauge 0,75mm² - 1,0mm²

Part No. VN02 025 0036 1C

Series

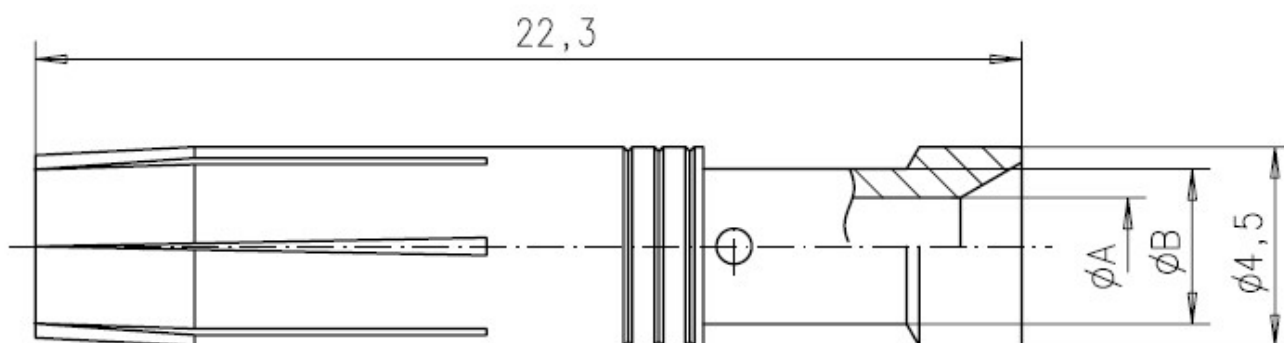
Subseries



COMMON CHARACTERISTICS		
Contact diameter		2,5 mm
Wire gauge from		0,75mm ² - 1,0mm ²
Wire gauge (AWG) from		18
Packaging / supplied as		Single contact
No. of pieces		100
Sex of Contact		Socket
Type of contact		Turned crimp contact
CLIMATICAL CHARACTERISTICS		
Upper temperature		+ 125 °C
Low er temperatur		- 40 °C
MECHANICAL CHARACTERISTICS		
Mechanical lifetime		500 mating cycles

turned crimp contact, female for wire gauge 0,75mm² - 1,0mm²

Part No. VN02 025 0036 1C



24.06.2013

Drawing Dimensions in mm (Inch)