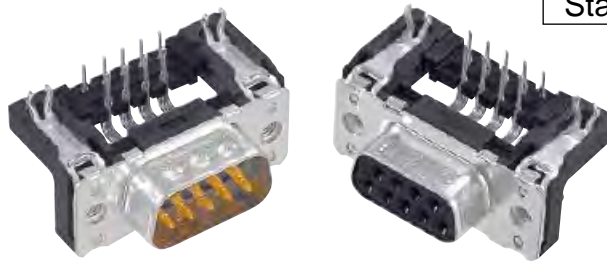


Number of contacts

Mounting height

9–37
50



Standard Versions

Stamped solder pins, angled with grounding board locks

Identification	No. of contacts	Part No.	
Performance levels Explanations see page 05.04 Other performance levels on request		Performance level 3	
		Performance level 2	
Male connector metal shell with dimples		2.84 mm pitch	
	9	09 65 163 781 . 1)	09 65 163 681 . 1)
	15	09 65 263 781 . 1)	09 65 263 681 . 1)
	25	09 65 363 781 . 1)	09 65 363 681 . 1)
	37	09 65 463 781 . 1)	09 65 463 681 . 1)
		2.54 mm pitch	
	9	09 65 162 781 .	09 65 162 681 .
	15	09 65 262 781 .	09 65 262 681 .
	25	09 65 362 781 .	09 65 362 681 .
	37	09 65 462 781 .	09 65 462 681 .
Female connector metal shell		2.84 mm pitch	
	9	09 66 153 761 . 1)	09 66 153 661 . 1)
	15	09 66 253 761 . 1)	09 66 253 661 . 1)
	25	09 66 353 761 . 1)	09 66 353 661 . 1)
	37	09 66 453 761 . 1)	09 66 453 661 . 1)
		2.54 mm pitch	
	9	09 66 152 761 .	09 66 152 661 .
	15	09 66 252 761 .	09 66 252 661 .
	25	09 66 352 761 .	09 66 352 661 .
	37	09 66 452 761 .	09 66 452 661 .
	50	09 66 552 761 . 1)	09 66 552 661 . 1)
Please insert digit for flange thread or fitted female screw locks			
Ø 3.1 mm hole ▶	0 ¹⁾		
M3 ▶	1		
4-40 UNC ▶	2		
fitted screw locks 4-40 UNC ▶	3		

D-Sub

¹⁾ Not normally kept in stock