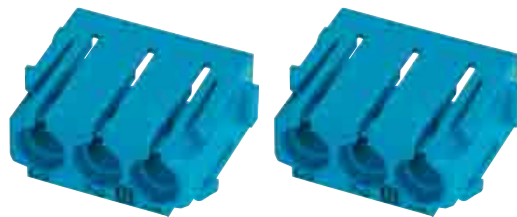
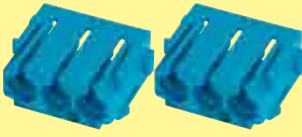
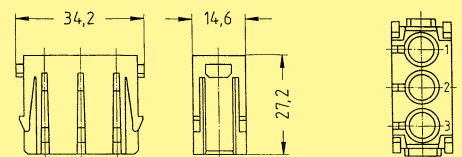



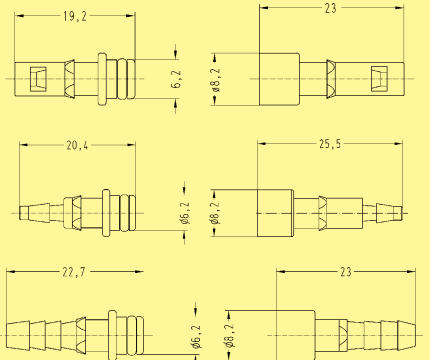

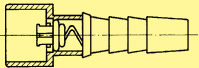
Number of contacts

3



Identification	Part number		Drawing	Dimensions in mm
	Male insert (M)	Female insert (F)		
for 1.6; 3; 4 mm Order contacts separately 	09 14 003 4501*	09 14 003 4501*	 <p>Contact arrangement view from termination side</p>	

Han Modular

Identification	ID (mm)	Part number		Drawing	Dimensions in mm
		Male contact	Female contact		
Pneumatic contacts without shut off for tube internal diameter (ID) 	1.6	09 14 000 6151	09 14 000 6251		
	3.0	09 14 000 6152	09 14 000 6252		
	4.0	09 14 000 6153	09 14 000 6253		
Pneumatic contacts with shut off for tube internal diameter (ID) 	1.6 3.0 4.0		09 14 000 6256 09 14 000 6257 09 14 000 6258	 <p>female contact with shut off in closed position</p>	

* Using of guiding pins is imperative (see chapter 95).

Stock items in bold type