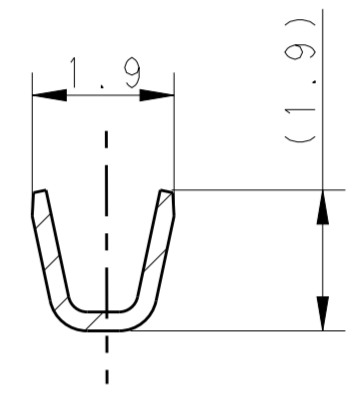
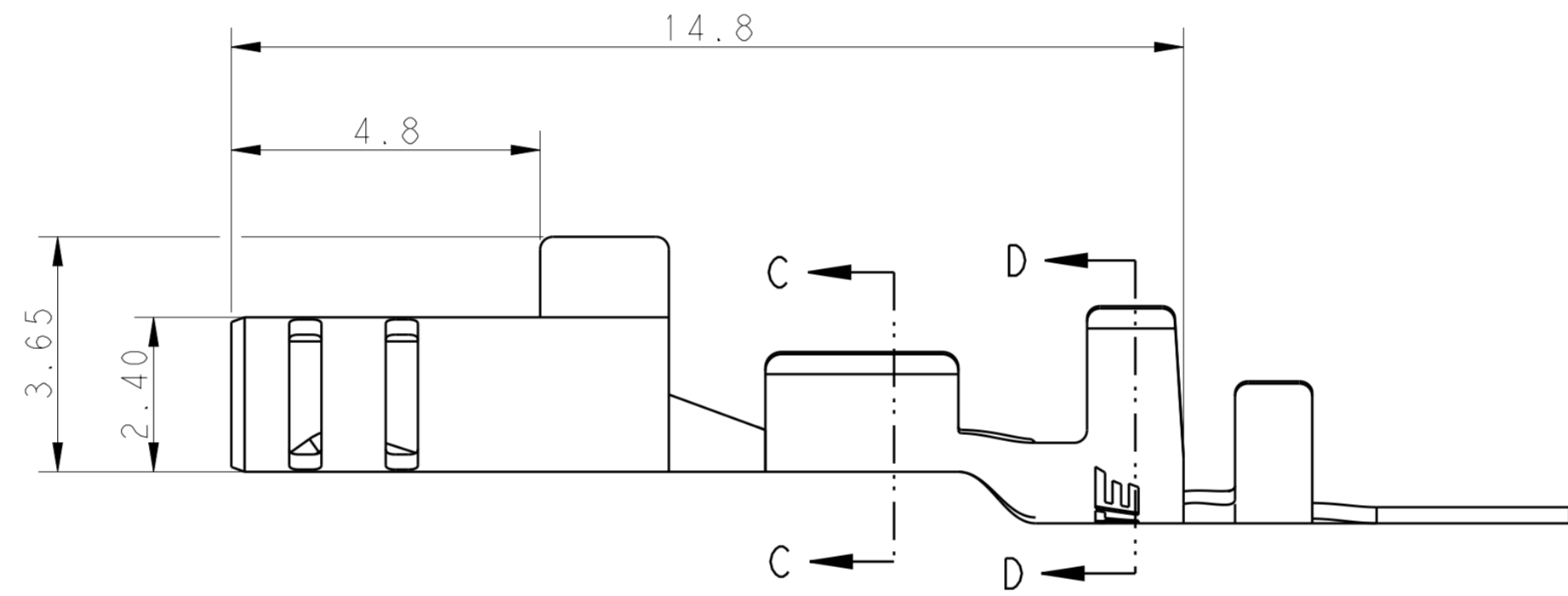
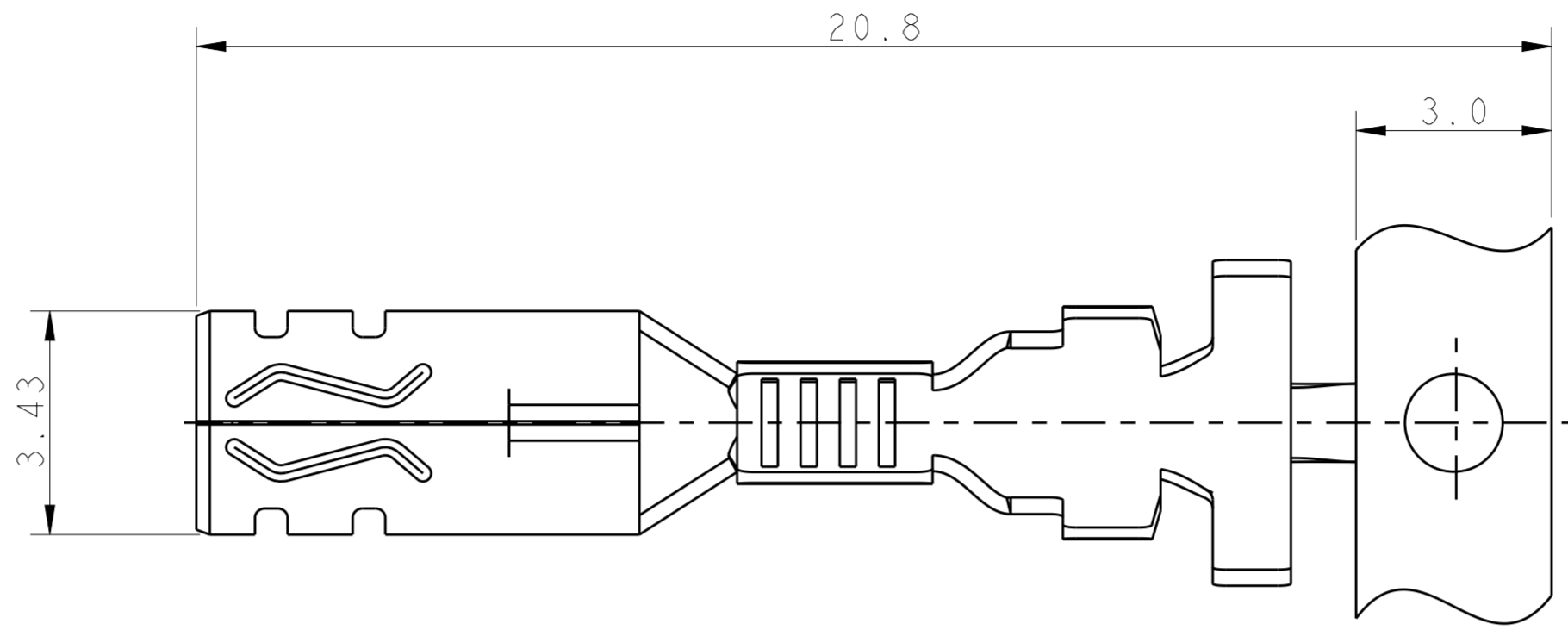
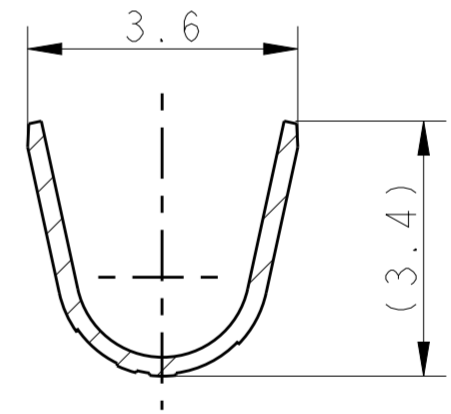


THIS DRAWING IS UNPUBLISHED. RELEASED FOR PUBLICATION 20
 © COPYRIGHT 20 BY - ALL RIGHTS RESERVED.

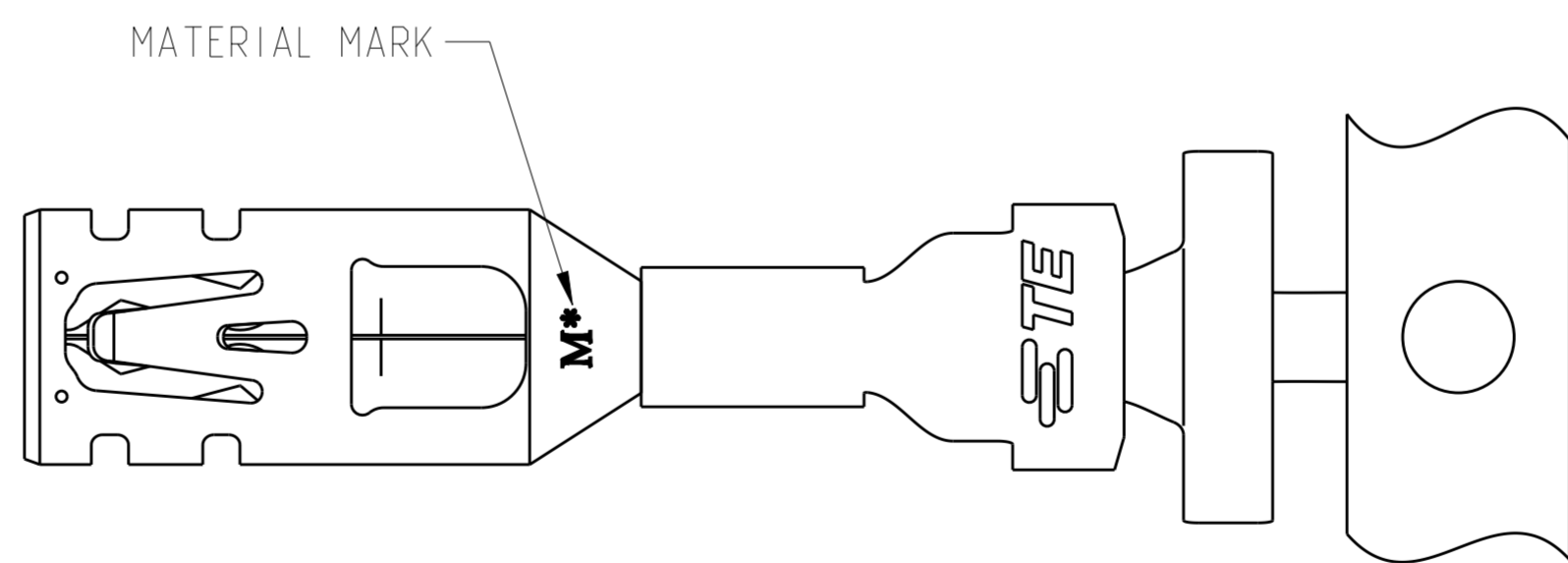
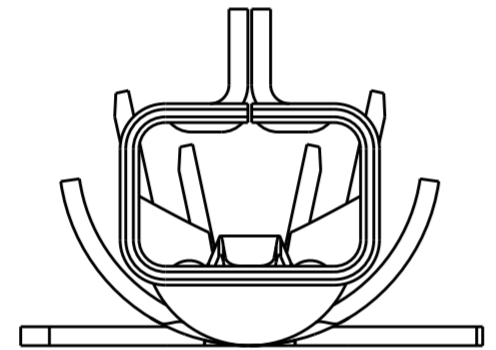
REVISIONS				
P	LTR	DESCRIPTION	DATE	APVD
A		RELEASE DRAWING	04FEB2013	T.W YH.M



SECTION C-C



SECTION D-D



- NOTE:
1. MATERIAL: COPPER ALLOY, PRE TIN PLATING
 2. PRODUCT SPEC: 108-106118
 3. APPLICATION SPEC: 114-106118
 4. APPLICABLE MATED PLUG HOUSING P/N:
-1971773-/*-1971776-*/*-1971876-*
 5. APPLICABLE WIRE: 22AWG
 6. APPLICABLE INSULATION DIAMETER: 2.25~2.45mm

1. This product has not completed validation testing.

HIGH(150°C)	M0	1971785-2
STANDARD(105°C)	M1	1971785-1
TEMP. RATING	MATERIAL MARK	PART NO

THIS DRAWING IS A CONTROLLED DOCUMENT.		DWN TOMMY WU 11JUL2012	STE TE Connectivity	
		CHK HAPYE WU 11JUL2012		
		APVD YUHONG MAO 11JUL2012	NAME	
DIMENSIONS: mm		PRODUCT SPEC	RECEPTACLE CONTACT POWER TRIPLE LOCK	
TOLERANCES UNLESS OTHERWISE SPECIFIED:		108-106118		
0 PLC ±		APPLICATION SPEC		
1 PLC ±0.5		114-106118		
2 PLC ±0.30		WEIGHT		
3 PLC ±		-		
4 PLC ±		Customer Drawing		
ANGLES ±		SCALE		
FINISH		-		
		SIZE		
		A2		
		CAGE CODE		
		G-1971785		
		DRAWING NO		
		RESTRICTED TO		
		-		
		SHEET		
		1 OF 1		
		REV		
		A		