

Fluke 810 Vibration Tester

Take a vibration expert along



Get answers now!

The Fluke 810 Vibration Tester is the most advanced troubleshooting tool for mechanical maintenance teams who need an answer now. It is a unique new kind of troubleshooting tool, engineered to detect and evaluate the most common mechanical problems.

The Fluke 810 Vibration Tester uses a simple step-by-step process to report on machine faults the first time measurements are taken, without prior machine history.

Use the Fluke 810 to:

- Easily determine the root cause, location and severity of common mechanical faults
- Efficiently prioritize and plan equipment repair or replacement
- Effectively deploy maintenance resources at the point of greatest impact

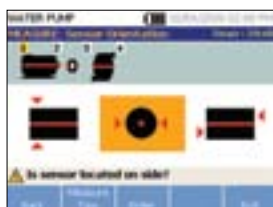
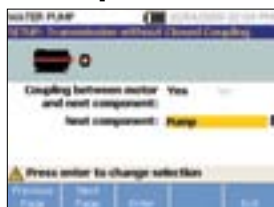
Simple 3 step process

The Fluke 810 helps you locate and diagnose common mechanical problems and prioritize repair actions in three simple steps:

1. Setup: Vibration testing has never been easier. The Fluke 810 asks for basic machine information you already know, like RPM and horsepower. Its onboard Info feature gives you field tips for setting up and taking measurements like a pro.

2. Measure: The Fluke 810 easily fits into your maintenance routine. Use it to quickly troubleshoot problems or monitor machine condition.

3. Diagnose: Fix it right the first time with the press of a button, the Fluke 810 identifies the root cause, its location, and the problem's severity.



Breakthrough diagnostic technology

The Fluke 810's diagnostic technology combines powerful algorithms with a database of real-world measurement experience, making the Fluke 810 the most advanced troubleshooting tool for mechanical maintenance teams.

Analyze most common equipment:

- Motors
- Fans and blowers
- Belt and chain drives
- Gearboxes
- Pumps
- Compressors
- Spindles

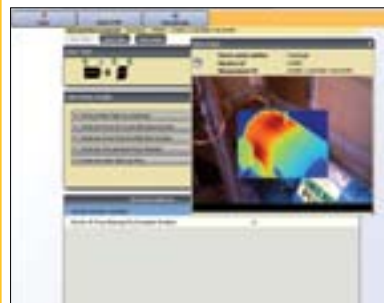
Detect the most common causes of mechanical failure:

- Bearing problems
- Misalignment
- Unbalance
- Looseness

Software and resources

Viewer PC Software

- Store and track your data
- Generate diagnostic reports and track the severity of your machine's condition
- Import and store JPEG and Fluke IS2 thermal images



Interactive, self-paced training on DVD

Learn more about the basics of vibration and how to fully utilize the features and functionality of the Fluke 810. Fluke has partnered with Mobius Institute, an industry leader in vibration training, to develop an interactive training DVD included with each Fluke 810.

Specifications

Diagnostic specifications	
Analysis for	Motors, fans, blowers, belts and chain drives, gearboxes, couplings, centrifugal pumps, piston pumps, sliding vane pumps, propeller pumps, screw pumps, rotary thread/gear/lobe pumps, piston compressors, centrifugal compressors, screw compressors, closed coupled machines, spindles
Standard faults	Unbalance, looseness, misalignment and bearing failures
Machine rotational speed range	200 rpm to 12000 rpm
Diagnosis details	Plain-text diagnosis, fault severity (slight, moderate, serious, extreme), repair details, cited peaks, spectra
Tester specifications	
IP rating	IP 54
A/D converter	4 channel, 24 bit
Dynamic range	128 dB
FFT resolution	800 lines
Battery	Lithium-ion, rechargeable, 8 hours operating life
Onboard storage capacity	2 GB internal + user accessible slot for additional storage
Warranty	Three-years (tester), One-year (sensor and tachometer)
Sensor specifications	
Sensor type	Tri-axial accelerometer, 100 mV/g ($\pm 5\%$, 25 °C)
Tachometer specifications	
Tachometer type	Laser Diode Class 2

Ordering information

Included accessories	Models
Tri-axial accelerometer, magnet mount, mounting pad kit with adhesive, quick-disconnect accelerometer cable, laser tachometer with storage pouch, battery pack with cable and adapters, shoulder strap, adjustable hand strap, Viewer PC software, mini USB to USB cable, carrying case, training DVD, getting started guide, quick reference guide, users manual on DVD.	FLUKE-810 FLUKE-810 Vibration Tester
Additional accessories	810SC-20 Sensor Cable, 20 ft

Check price and availability at
www.fluke.com/wtb