

Mini, 7/8" Field Attachable Connectors

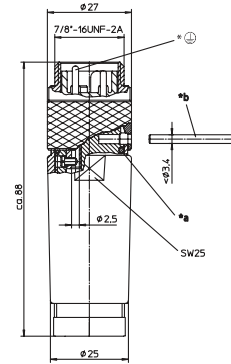
RSC 30-RSC 50 | RKC 30-RKC 50



Male, 3-, 4-, and 5-Pole

Field attachable connector, Mini, 7/8" male connector 3-, 4-, and 5-pole with threaded joint, assembling with screw terminals.

RSC 30-RSC 50



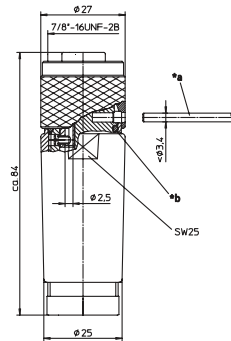
- *a O-ring
- *b Pin or screwdriver as assembly tool
- *⊕ Contact 1.5 leading



Female, 3-, 4-, and 5-Pole

Field attachable connector, Mini, 7/8" female connector 3-, 4-, and 5-pole with threaded joint, assembling with screw terminals.

RKC 30-RKC 50

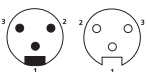


- *a O-ring
- *b Pin or screwdriver as assembly tool

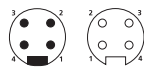
Pin Assignments

Mini, 7/8" - Male / Female

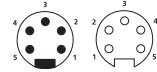
3 poles



4 poles



5 poles





Be Certain with Belden

Mini, 7/8" Field Attachable Connectors RSC 30-RSC 50 | RKC 30-RKC 50

Technical Data

Environmental













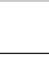
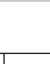
Degree of protection IP 67 / NEMA 6P
 Operating temperature range -40°C (-40°F) / +90°C (+194°F)

Mechanical

Housing / Molded body PA
 Insert TPU, self-extinguishing
 Contact CuZn, gold over nickel plated
 Coupling nut Al anodized
 O-ring NBR
 Mode of connection screw terminals
 Connectable conductor max. 1.5 mm²

Electrical

Contact resistance ≤ 5 mΩ
 Nominal current at 40°C 3 poles 12 A
 4-5 poles 9 A
 Nominal voltage 240 V
 Rated voltage 250 V
 Test voltage 3 poles 2.5 kV eff. / 60 s
 4-5 poles 1.5 kV eff. / 60 s
 Insulation resistance > 10⁹ Ω
 Pollution degree 3

| Part Number | | Pins | Cable Diameter Range | Characteristics |
|-------------|-------------|------|----------------------|---|
| Male | Female | | | |
| RSC 30/9 | RKC 30/9 | 3 | ∅ 6.0 - 8.0 mm |   |
| RSC 30/11 | RKC 30/11 | | ∅ 8.0 - 10.0 mm |   |
| RSC 40/9 | RKC 40/9 | 4 | ∅ 6.0 - 8.0 mm |   |
| RSC 50/9 | RKC 50/9 | 5 | ∅ 6.0 - 8.0 mm |   |
| RSC 50/11 | RKC 50/11 | | ∅ 8.0 - 10.0 mm |   |
| RSC 50/13.5 | RKC 50/13.5 | | ∅ 10.0 - 12.0 mm |   |
| RSC 50/16 | RKC 50/16 | | ∅ 12.0 - 14.0 mm |   |

Field Attachable Connectors