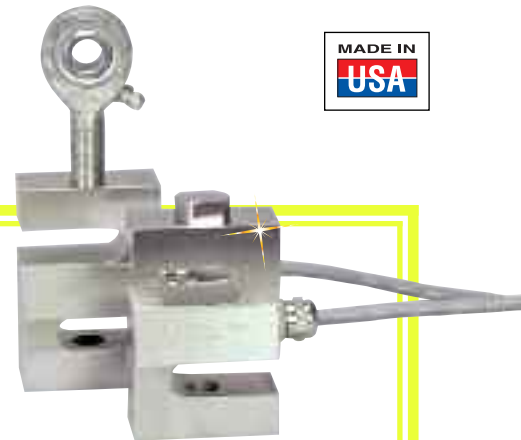


OPTIONS AND ACCESSORIES

LOAD BUTTONS AND ROD ENDS

FOR STANDARD LOAD CELLS



Dimensions: mm (in)

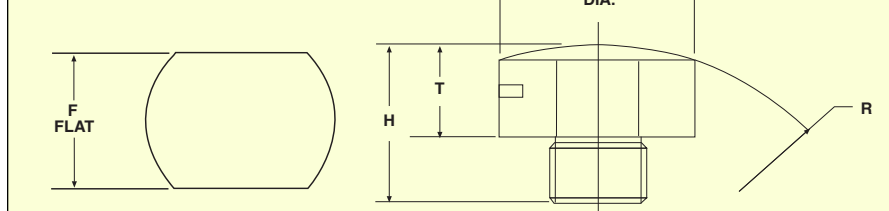
AVAILABLE FOR FAST DELIVERY!

Load Buttons (Specify Model Number)

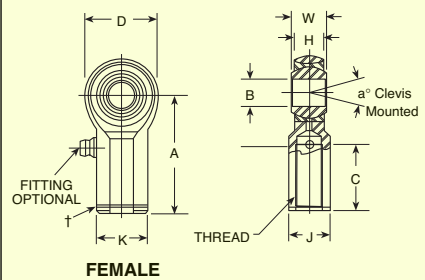
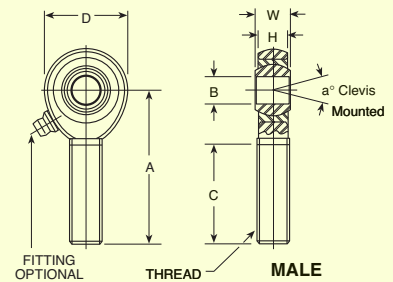
MODEL	PRICE	THREAD	H	T	D	F	R
LBC-014	\$40	¼-28	13 (0.50)	5 (0.20)	15 (0.60)	13 (0.50)	51 (2.0)
LBC-038	40	¾-24	15 (0.60)	8 (0.30)	19 (0.75)	16 (0.63)	51 (2.0)
LBC-012	40	½-20	18 (0.70)	8 (0.30)	19 (0.75)	16 (0.63)	102 (4.0)
LBC-034	55	¾-16	23 (0.90)	8 (0.30)	38 (1.50)	32 (1.25)	152 (6.0)
LBC-100	55	1-14	28 (1.10)	8 (0.30)	38 (1.50)	32 (1.25)	203 (8.0)
LBC-101	55	1-12	28 (1.10)	8 (0.30)	38 (1.50)	32 (1.25)	203 (8.0)
LBC-114	60	1¼-12	38 (1.50)	13 (0.50)	51 (2.00)	44 (1.75)	254 (10.0)
LBC-112	70	1½-12	57 (2.25)	25 (1.00)	64 (2.50)	57 (2.25)	356 (14.0)
LBC-200-12	*	2-12	89 (3.50)	28 (1.10)	57 (2.25)	44 (1.75)	203 (8.0)
LBC-300-8	*	3-8	133 (5.25)	47 (1.86)	83 (3.25)	67 (2.63)	305 (12.0)

* Consult Engineering.

Load Button Dimensions



Rod End Dimensions



Load Cell Options (Limited Models Only)

Temperature Compensation:

"-TC1" extended compensated range (-46 to 93°C/-50 to 200°F) not exceeding operating range.....\$50
 "-TC2" 163°C (350°F).....225

Additional Cable Length:

4-conductor PVC.....\$2.00/ft
 4-conductor PTFE.....4.50/ft
 6-conductor PVC.....2.75/ft
 6-conductor PTFE.....6.50/ft

Mating Connectors:

PT06F10-6S.....\$26.50
 PT06A-10-6S (SR).....18.00

Calibration/Recalibration:

"-NC5" 5-point calibration.....\$150.00
 0%, 50%, 100%, 50%, 0%
 Extra calibration points.....\$25/pt
 See Page B-12 for full details on calibrations

Built-In Amplifiers:

0 to 5 Vdc.....\$175
 4 to 20 mA.....195

In-Line Amplifiers:

Consult Engineering

Rod Ends (Specify Model Number) Dimensions: mm (in)

MALE ROD ENDS	PRICE	THREAD UNF-3A	B	W	H	A	D	C	a°	K	J	STATIC LOAD (lb)	WT. (lb)
REC-010M*	\$10	10-32	5 (0.190)	8 (0.312)	6 (0.234)	32 (1.25)	16 (0.625)	19 (0.750)	17	-	-	1170	0.03
REC-014M	25	¼-28	5 (0.190)	8 (0.312)	6 (0.250)	40 (1.562)	19 (0.750)	25 (1.000)	10	-	-	2158	0.04
REC-038M	25	¾-24	8 (0.3125)	11 (0.437)	9 (0.344)	49 (1.938)	25 (1.000)	32 (1.250)	12	-	-	5323	0.25
REC-012M	45	½-20	11 (0.4375)	14 (0.562)	11 (0.437)	62 (2.438)	33 (1.312)	38 (1.500)	12	-	-	23,452	0.25
REC-058M	69	¾-18	13 (0.5000)	16 (0.625)	13 (0.500)	67 (2.625)	38 (1.500)	41 (1.625)	10	-	-	31,390	0.38
REC-034M	65	¾-16	16 (0.6250)	19 (0.750)	14 (0.562)	73 (2.875)	44 (1.750)	44 (1.750)	13	-	-	40,572	0.60
REC-100M	135	1-14	25 (1.000)	35 (1.375)	25 (1.000)	105 (4.125)	70 (2.750)	545 (2.120)	14	-	-	43,541	2.1
REC-114M	150	1¼-12	32 (1.250)	28 (1.093)	24 (0.937)	105 (4.125)	70 (2.750)	54 (2.125)	7	-	-	44,500	2.4
REC-112M	185	1½-12	38 (1.500)	33 (1.312)	29 (1.125)	137 (5.375)	89 (3.500)	76 (3.000)	6.5	-	-	138,826	4.8
FEMALE ROD ENDS	PRICE	UNF-2B	B	W	H	A	D	C	a°	K	J	STATIC LOAD (lb)	WT. (lb)
REC-006F*	\$10	6-32†	3 (0.1250)	6 (0.250)	5 (0.187)	21 (0.812)	13 (0.500)	11 (0.437)	16	8 (0.312)	6 (0.250)	1202	0.02
REC-010F*	10	10-32	5 (0.190)	8 (0.312)	6 (0.234)	27 (1.062)	16 (0.625)	13 (0.500)	17	10 (0.406)	8 (0.312)	2028	0.04
REC-012F	35	½-20	13 (0.500)	16 (0.625)	13 (0.500)	54 (2.125)	33 (1.312)	30 (1.187)	12	22 (0.875)	19 (0.750)	16,238	-
REC-014F	10	¼-28	6 (0.250)	10 (0.375)	7 (0.265)	33 (1.312)	19 (0.750)	17 (0.687)	21	12 (0.469)	10 (0.375)	3114	0.05
REC-034F	65	¾-16	19 (0.750)	22 (0.875)	17 (0.687)	73 (2.875)	44 (1.750)	44 (1.750)	14	29 (1.125)	25 (1.000)	28,081	-
REC-038F	25	¾-24	10 (0.375)	13 (0.500)	10 (0.406)	41 (1.625)	25 (1.000)	24 (0.937)	12	17 (0.687)	14 (0.562)	9544	-

* Not available with grease fitting.

† UNC thread.