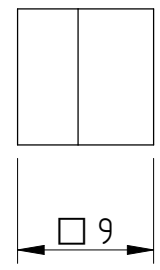
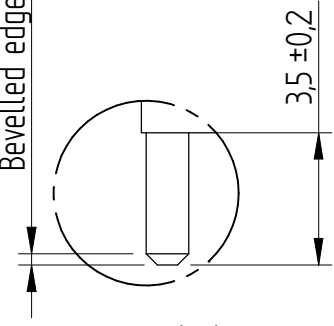


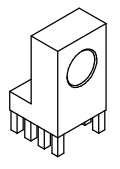
B



Bevelled edge 0,3 ± 0,2 around



DETAIL B (5:1)



(1:1)

Surface coating 5-10µm Sn on 2-4µm Cu

(PROJECTION)		(TOLERANCES)	DIN ISO 2768-m		(SURFACE)	SCALE	2:1	TOTAL WEIGHT: 5,6 g	
			(MATERIAL)	CuZn39Pb3		WEIGHT Cu: 0,0196 g			
F			DATE	NAME	(TITLE)	Power Element 90° with hole $\phi 5,2$ two Rows Pin-Plate			
			DRAWN	2009/07/15					Dino Cantara
			VERIFIED	2009/07/15	Heiko Schmid	(DRAWING NUMBER)	7461104		
							Sheet	1	
ISSUE	CHANGE	DATE	NAME					1	
CONFIDENTIAL !! ALL RIGHTS RESERVED. Passing on or duplication without prior written agreement prohibited.									