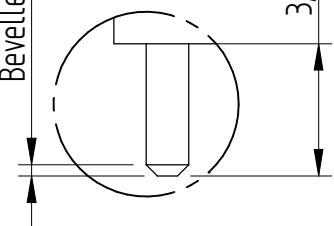
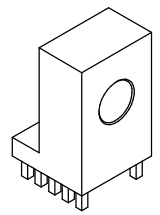


Bevelled edge 0,3 ± 0,2 around



DETAIL B (5:1)



(1:1)

Surface coating 5-10µm Sn on 2-4µm Cu

(PROJECTION)		(TOLERANCES)	DIN ISO 2768-m		(SURFACE)	SCALE	2:1	TOTAL WEIGHT: 17,6 g
			(MATERIAL)	CuZn39Pb3		WEIGHT Cu: 0,0387 g	WEIGHT Sn: 0,0792 g	
F				DATE	NAME	(TITLE)	Power Element 90° with hole $\phi 6,2$ two Rows Pin-Plate	
		DRAWN	2009/07/15	Dino Cantara				
		VERIFIED	2009/07/15	Heiko Schmid				
						(DRAWING NUMBER)	7461107	Sheet 1
								1

