

## 300Mbps Wireless N ADSL2+ Modem Router

### TD-W8960N

#### ⦿ Features:

- All-in-One: ADSL2+ modem, NAT router, 4-port switch and wireless N access point in one device provides an one-stop networking solution
- Wireless N speed up to 300Mbps
- Parental control allows parents or administrators to establish restricted access policy for children or staff
- Bandwidth Control allows administrators to determine how much bandwidth is allotted to each PC
- Support up to 10 IPSec VPN tunnels simultaneously, offering you the most economic way to connect to the company's central network securely
- Ethernet WAN (EWAN) offers another broadband connectivity option for connecting to Cable, VDSL or Fiber modems
- Easy Setup Assistant with multi-language support provides quickly & hassle free installation<sup>1</sup>
- Wi-Fi On/Off Button allows users to simply turn their wireless radio on or off
- WPS Button allows users to easily setup a WPA encrypted secure connection
- 4000V Lightning Protection helps your device to avoid the damage of tough thunderstorms
- Port VLAN binds specific LAN ports to PVCs for an enjoyable IPTV experience<sup>2</sup>



#### ⦿ Description:

The TD-W8960N Wireless N ADSL2+ Modem Router is an All-in-One device that combines the functions of a high speed DSL modem, a 4-Port 10/100Mbps NAT router and a wireless access point. It is designed to give you a one-stop solution to acquire and share high speed Internet access over a wired/wireless network. Supporting the latest ADSL standards, the TD-W8960N brings with it much higher speed than a dial-up connection without tying up the phone line. Compiling with the IEEE 802.11n, users will get up to 15X the speed and 5X the range of conventional 11g products. Now you can enjoy more kinds of bandwidth consuming applications like HD video streaming wirelessly, from anywhere in your entire home or even the yard. In addition, with the function of IPSec VPN (site-to-site), TD-W8960N can guarantee the security of the data transmitting from home to corporate network or between remote branch offices.

<sup>1</sup> The USB Printer Setup Wizard supports Windows 7 32bit, Vista 32bit, XP 32/64bit, Windows 2003, 2000 currently. For the printer compatibility information, please visit [www.tp-link.com](http://www.tp-link.com).

<sup>2</sup> The Easy Setup Assistant utility supports Windows 2000/XP/Vista and Windows 7 operating system at present.

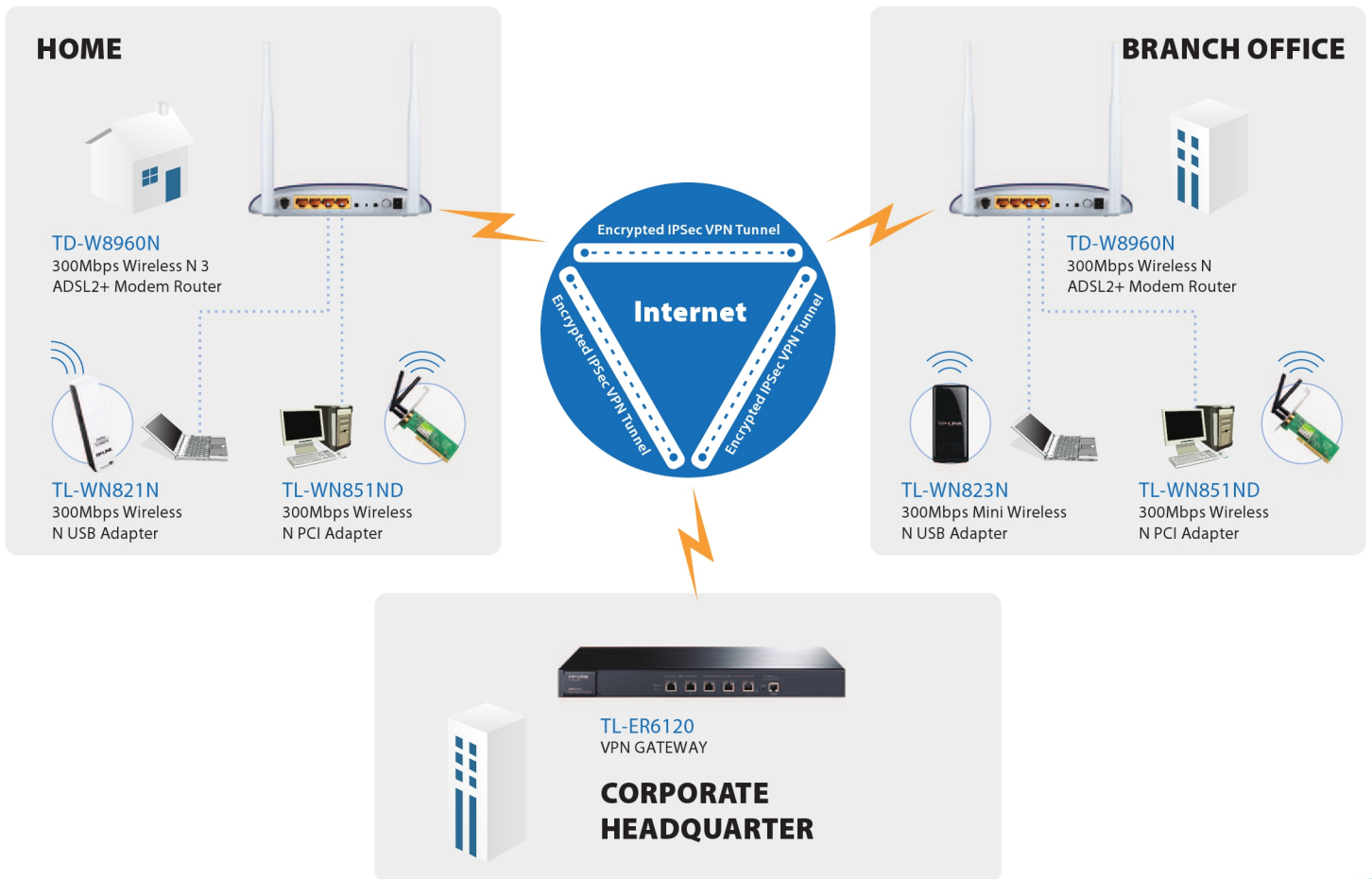
## Ⓞ Specifications:

HARDWARE FEATURES	
Interface	1 10/100Mbps RJ45 WAN/LAN Port 3 10/100Mbps RJ45 LAN Ports 1 RJ11 Port
Button	1 Power On/Off Switch 1 WPS Button 1 Wi-Fi On/Off Button
External Power Supply	12VDC/1A
IEEE Standards	IEEE 802.3, 802.3u
ADSL Standards	Full-rate ANSI T1.413 Issue 2 ITU-T G.992.1(G.DMT) ITU-T G.992.2(G.Lite) ITU-T G.994.1 (G.hs) ITU-T G.995.1
ADSL2 Standards	ITU-T G.992.3 (G.dmt.bis) ITU-T G.992.4 (G.lite.bis)
ADSL2+ Standards	ITU-T G.992.5
Dimensions (W x D x H)	7.7 x 5.3 x 1.5 in. (195 x 135 x 39 mm)
Antenna Type	Omni directional, Detachable, Reverse SMA
Antenna Gain	2 x 3dBi
WIRELESS FEATURES	
Wireless Standards	IEEE 802.11n, 802.11g, 802.11b
Wireless Speeds	Up to 300Mbps (dynamic)
Frequency	2.4-2.4835GHz
EIRP	<20dBm(EIRP)
Wireless Security	Support WEP,WPA/WPA2,WPA-PSK/WPA-PSK2 Wireless MAC Filtering
SOFTWARE FEATURES	
Quality of Service	QoS Remarking based on IPP/ToS, DSCP and 802.1p IP Based Bandwidth Control
VPN Pass-Through	PPTP, L2TP, IPSec Pass-through
ATM/PPP Protocols	ATM Forum UNI3.1/4.0 PPP over ATM (RFC 2364) PPP over Ethernet (RFC2516) IPoA (RFC1577/2225) PVC - Up to 8 PVCs
IPsec VPN	Supports up to 10 IPsec VPN tunnels
Advanced Features	Traffic Shaping(ATM QoS) UBR, CBR, VBR-rt, VBR-nrt; Ethernet WAN connection (EWAN) Parental Control Dynamic Host Configuration Protocol (DHCP), DHCP relay; Network Address Translation (NAT); PVC/Ethernet Port Mapping VLAN, 802.1P, Static Routing, RIP v1/v2 (optional); DNS Relay, DDNS, IGMP snooping V1/2

⊙ Specifications:

SOFTWARE FEATURES	
Advanced Features	IGMP Multicast, UPnP
Security	NAT Firewall, SPI Firewall, MAC / IP / Packet / Application / URL Filtering, Denial of Service(DoS), SYN Flooding, Ping of Death
Management	Web Based Configuration(HTTP), Remote management, Telnet management, Command Line Interface, SSL for TR-069, SNMP v1/2c, SNMP over EOC, Web Based Firmware Upgrade, CWMP(TR-069), Diagnostic Tools
OTHERS	
Certification	CE, FCC, RoHS
System Requirements	Microsoft® Windows® 98SE, NT, 2000, XP, Vista™ or Windows 7, MAC® OS, NetWare®, UNIX® or Linux.
Environment	Operating Temperature: 0~40 (32~104) Storage Temperature: -40~70 (-40~158) Operating Humidity: 10%~90% non-condensing Storage Humidity: 5%~90% non-condensing

⊙ Diagram:



## ⦿ Diagram:

### Package:

- 300Mbps Wireless N ADSL2+ Modem Router  
TD-W8960N
- External Splitter
- RJ-11 Telephone Cable
- RJ-45 Ethernet Cable
- Quick Installation Guide
- Resource CD
- Power Adapter

### Related Products:

- 300Mbps Wireless N USB Adapter  
TL-WN821N
- 300Mbps Mini Wireless N USB Adapter  
TL-WN823N
- 300Mbps Wireless N PCI Adapter  
TL-WN851ND

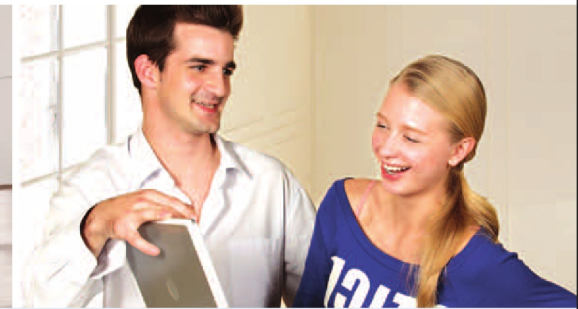
## Wireless N USB Adapter TL-WN821N



Portable, Flexible, Reliable,  
brings smooth  
Wireless N experience

Adopts MIMO, CCA™ technology,  
brings competitive performance  
in 11n routers

QSS, Quick Secure Setup,  
complies with WPS for  
effortless wireless security setup



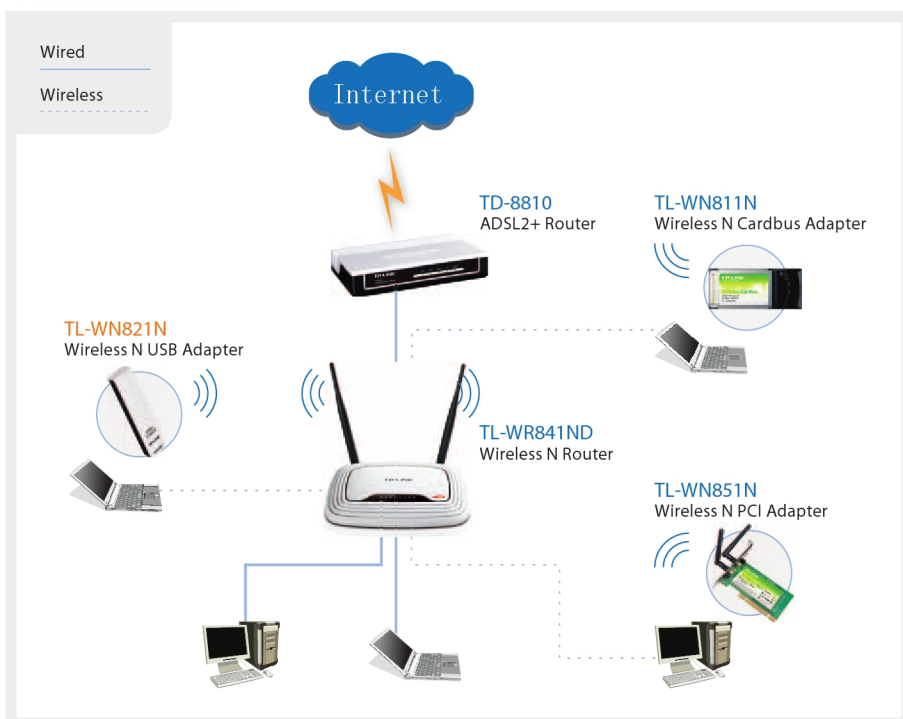
### Description:

The TL-WN821N Wireless N USB Adapter complies with IEEE 802.11n, IEEE 802.11g, and IEEE 802.11b standards. Wireless transmission rates can reach up to 300Mbps. The USB adapter with internal Omni-directional antennas works well with other 11g and 11n protocol wireless products and adopts MIMO technology which can bring a faster, wider, and more stable wireless experience. This product can also simultaneously operate bandwidth intensive applications using a lot of bandwidth which are sensitive to interruption. When using multiple bandwidth intensive applications, the most sensitive of these applications can be given priority over the others to be allocated more bandwidth in order to assure quality.

## Specifications:

Standards	IEEE 802.11n, IEEE 802.11g, IEEE 802.11b, CSMA/CA with ACK
Interface	USB 2.0
Wireless Signal Rates	11n: 270/243/216/162/108/81/54/27Mbps 135/121.5/108/81/54/40.5/27/13.5Mbps
With Automatic Fallback	130/117/104/78/52/39/26/13Mbps 65/58.5/52/39/26/19.5/13/6.5Mbps
Frequency Range	2.4-2.4835GHz
Wireless Transmit Power	20dBm(MAX)
Modulation Type	OFDM/CCK/16-QAM/64-QAM
Receiver Sensitivity	270M: -68dBm@10% PER 130M: -68dBm@10% PER 108M: -68dBm@10% PER 54M: -68dBm@10% PER 11M: -85dBm@8% PER 6M: -88dBm@10% PER 1M: -90dBm@8% PER
Antenna Type	Omni Directional, internal
Wireless Security	64/128/152 bit WEP, WPA/WPA2, WPA-PSK/WPA2-PSK (TKIP/AES)
Certifications	CE, FCC
Support Operating System	Windows 7/Vista/XP/2000
Operating Temperature	0°C~40°C (32°F~104°F)
Storage Temperature	-40°C~70°C (-40°F~158°F)
Relative Humidity	10% ~ 90%, non condensation
Storage Humidity	5%~95% non-condensing
Dimensions	3.4 x 1.0 x 0.5 (in.) 86mm x 26mm x 12mm

## Diagram:



## Features:

- USB 2.0 connector
- Provides Infrastructure and Ad-Hoc modes
- 300M wireless transmission rate, adopts MIMO, CCA™ technology, allows for faster speed, further wireless coverage, more stable performance
- Quick Secure Setup, complies with WPS for worry free wireless security
- Supports 64/128/152 strength WEP encryptions, as well as WPA/WPA2 and WPA-PSK/WPA2-PSK encryptions and mechanisms
- Web-site Configuration and monitoring
- Supports Roaming technology, guarantees efficient wireless connections.
- Supports Windows 7/Vista/XP/2000

## Package:

- Wireless N USB Adapter TL-WN821N
- Quick Setup Guide
- Resource CD, including:
  - TL-WN821N Wireless Client Utility and Drivers
  - User Guide
  - Other Helpful Information

## Related Products:

- Wireless N Router TL-WR941ND
- Wireless N Router TL-WR841ND
- Wireless N PCI Adapter TL-WN851N

Specifications are subject to change without notice. TP-LINK is a registered trademark of TP-LINK Technologies Co., Ltd. Other brands and product names are trademarks or registered trademarks of their respective holders. No part of the specifications may be reproduced in any form or by any means or used to make any derivative such as translation, transformation, or adaptation without permission from TP-LINK Technologies Co., Ltd.