

US-313 - USB 2 Port RS422/485 1MBaud

CONNECT, CONFIGURE, CONTROL YOUR SERIAL DEVICES



Features

- 2 port RS422/485
- 128 Byte Tx and 384 Byte Rx FIFOs
- Up to 921,600 Baud
- DB9 Connector - 9 Pin Male connector (9 Pin Male)
- IP-30 rated enclosure
- Drivers for all popular operating systems
- LED status indication
- Supplied with USB cable
- Supplied with rubber feet for office environment
- Optional DIN rail mounting kits
- Lifetime Warranty* and Lifetime Support

* Registration required

Description

USB to Serial adapter providing two RS422/485 serial ports. Data transfer rates up to 921,600 baud rates and the 128 byte deep transmit and 384 byte receive FIFOs, coupled with 1Mbit line drivers deliver uncompromising performance on your laptop/PC. Drivers for Windows 32 bit and 64 bit Operating Systems including Windows XP, Server 2003, Vista, Server 2008, Windows 7 and Windows 8 with additional drivers for both Mac OS X and Linux.

USB to serial is the quick low cost way to connect your computer to a serial comms enabled device. Boost software gives industry leading functionality and compatibility.

These products do away with traditional issues with USB technology so you can buy with confidence!

With Brainboxes industry renowned Lifetime Warranty and Lifetime Support!

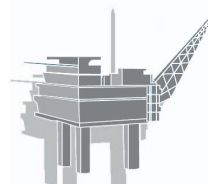
Example Application



CNC Machine



Point of Sale



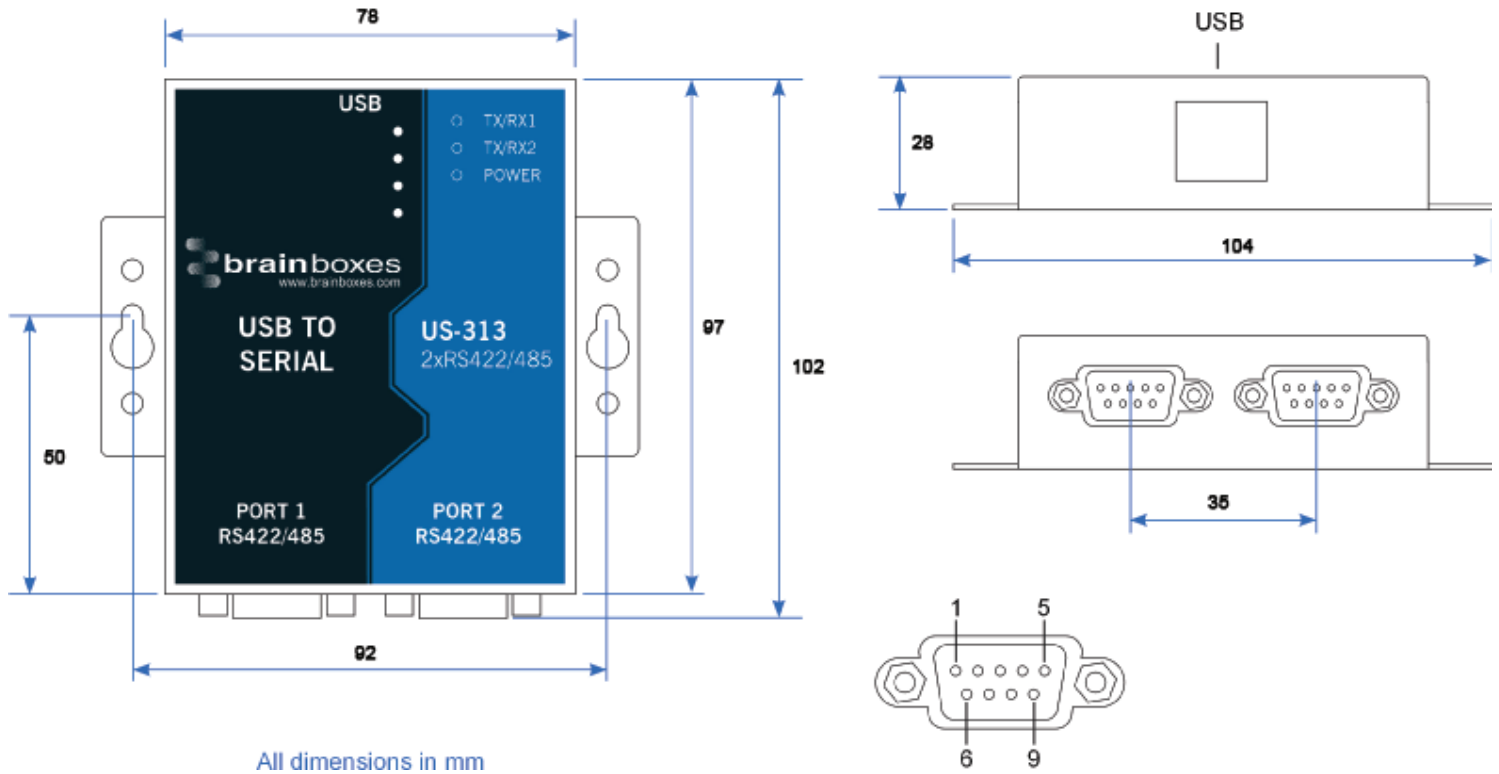
Oil Rig



Laboratory

US-313 - USB 2 Port RS422/485 1MBaud

Box Information



Device Dimensions

Size - 102(l) x 104(w) x 28(h) mm, 4.02(l) x 4.09(w) x 1.10(h) inches

LED Information

Status LED	Green	Power On
Serial Port LEDs	Green light on	Data TX
	Green light on	Data RX

Port

Ports	2 x RS422/485
Connector	DB9 Connector - 9 Pin Male connector (9 Pin Male)
FIFO Size	384 RX FIFO + 128 TX FIFO
Operating Distance	RS422/485 Standard (4000 ft : 1200 metres)
Cable	USB cable Type A to B (1 metre ~ 3ft)

US-313 - USB 2 Port RS422/485 1MBaud

Port Settings

Baud Rate	921,600
Data Bits	7 or 8
Parity	Odd, Even, None, Mark or Space
Stop Bits	1 or 2
Flow Control	RTS/CTS, DSR/DTR, XON/XOFF
Tx/Rx Modes	Full Duplex, Half Duplex Autogating

Product Information

Power Consumption	180mA @ 5V
Product Weight	0.115 kg, 0.25 pounds

Interface

OS Compatibility	Microsoft Windows 8 32 bit & 64 bit Editions Microsoft Windows 7 32 bit & 64 bit Editions Windows Server 2008 32 bit & 64 bit Editions Windows Vista 32 bit & 64 bit Editions
BUS	USB 2.0



Approvals

Industry Approvals	Microsoft Certified Gold Partner WEEE RoHS
Microsoft Approvals	AEO (C-TPAT)
Microsoft Signed Drivers	Windows 8 32 bit & 64 bit Editions Windows 7 32 bit & 64 bit Editions Windows Vista 32 bit & 64 bit editions Windows XP 32 bit & 64 bit editions



Packing Information

Packaging	Installation CD including manual, Microsoft signed drivers & utilities
Device	USB 2 Port RS422/485 1MBaud
Optional Extras	DIN-Rail Mounting Kit - MK-048 Power through USB, no extra power supplied required Power through USB, no extra power supplied required
Packaged Weight	0.28 kg, 0.62 pounds
Packaged Dims	170(l) x 240(w) x 60(h) mm, 6.69(l) x 9.45(w) x 2.36(h) inches

Product Support

Warranty	Lifetime - online registration required
Support	Lifetime Web, Email and Phone Support from fully qualified, friendly staff who work in and alongside the Product Development Team



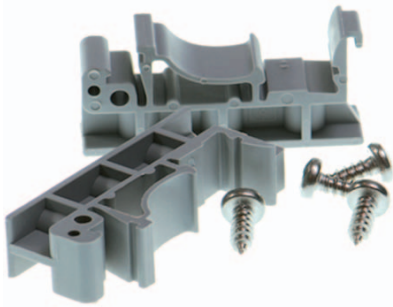
US-313 - USB 2 Port RS422/485 1MBaud

Additional Information

OEM option	Available for bulk buy OEM
Made In	Manufactured in the UK by Brainboxes Winner 2005 European Electronics Industry Awards 'Manufacturer of the Year'
Customisable	Brainboxes operate a 'Perfect Fit Custom Design' policy for volume users. More info: sales@brainboxes.com

Optional Extras

ORDER CODE - DIN-Rail Mounting Kit - MK-048



ORDER CODE - Additional Power through USB, no extra power supplied required