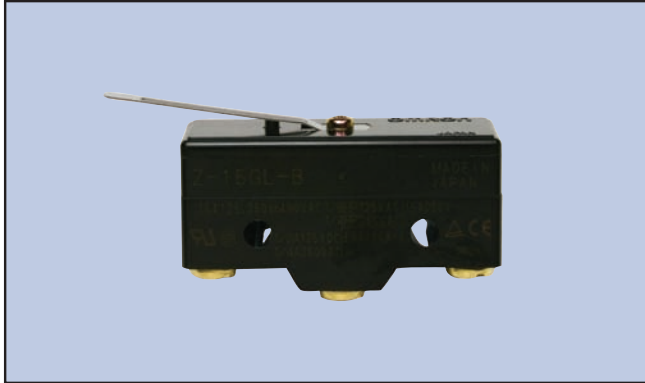


# Snap Action, Standard



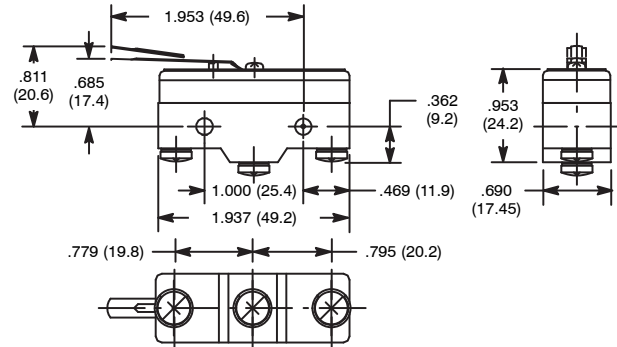
## Features

- Actuator: Hinge Lever



NTE Type No.	Circuitry	Max. Pre-Travel	Min. Over Travel	Max. Operating Force	Max. Differential	Diag No.
54-428	SPDT	0.157"	0.063"	141g	0.051"	S53

## S53



## Specifications

**Current Rating:** 15A 125/250VAC, 0.5A 125VDC, 0.25A 250VDC  
1/8 HP 125VAC, 1/4 HP 250VAC

**Contact Resistance:** 15 Milliohms (max.) initial

**Insulation Resistance:** 100 Megohms at 500VDC

**Dielectric Strength:** 1500VAC (50/60Hz for 1 minute)

**Temperature Rating:** -13° to +176°F (-25° to +80°C)

**Electrical Life:** 100,000 cycles min. (under rated load)

**Mechanical Life:** 1,000,000 cycles min.

**Terminal Type:** Screw Terminal

# Snap Action, Standard



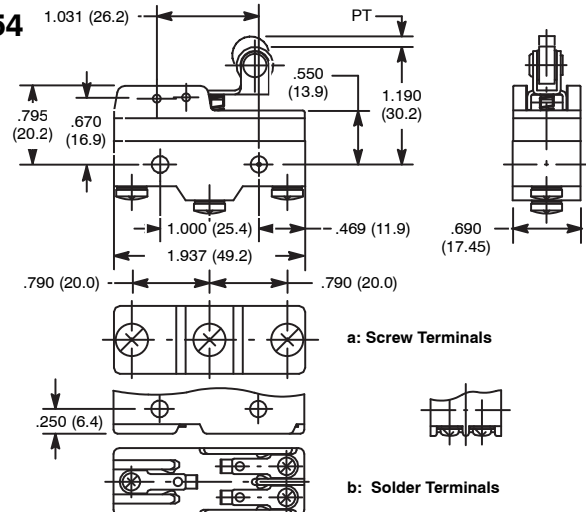
## Features

- Actuator: Short Hinge Roller Lever



NTE Type No.	Circuitry	Max. Pre-Travel	Min. Over Travel	Max. Operating Force	Max. Differential	Diag No.
54-429	SPDT	0.22"	0.05"	160g	0.02"	S54b
54-440	SPDT	0.09"	0.095"	160g	0.02"	S54a

## S54



## Specifications

**Current Rating:** 15A 125/250/480VAC, 0.5A 125VDC, 0.25A 250VDC  
1/8 HP 125VAC, 1/4 HP 250VA

**Contact Resistance:** 50 Milliohms (max.) initial

**Insulation Resistance:** 100 Megohms at 500VDC

**Dielectric Strength:** 1000VAC (50/60Hz for 1 minute)

**Temperature Rating:** -13° to +176°F (-25° to +80°C) with no icing

**Electrical Life:** 500,000 cycles min. (under rated load)

**Mechanical Life:** 20,000,000 cycles min.

**Terminal Type:** Refer to Diag No. in Table