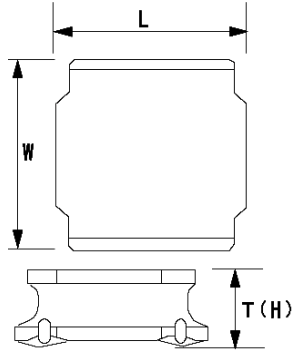


SMD Power Inductors (NR series S type)

NRS6010T1R5MMGF



■ Features

- Item Summary
1.5 μ H(\pm 20%), 2400mA, 1900mA
- Lifecycle Stage
Mass Production
- Standard packaging quantity (minimum)
Taping 1000pcs

■ Products characteristics table

CaseSize (EIA/JIS)	~/6010
Inductance	1.5 μ H(\pm 20%)
Inductance Measuring Frequency	100kHz
Rated Current -Saturation Current	2400mA
Rated Current -Temperature Rise Current	1900mA
DC Resistance (max)	0.108 Ω
Avg. of DC.Resistance	0.09 Ω
Temperature Range	-25°C to 125°C
Self-resonant Frequency (min)	77MHz
RoHS Compliance	Yes
Halogen Free	Yes
Soldering Method	Reflow

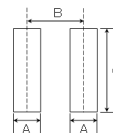
■ External Dimensions

L	6mm \pm 0.2
W	6mm \pm 0.2
H	1mm max

■ Recommended Land Patterns

【推奨ランドパターン】
実装上の注意
・実装状態を確認の上ご使用くださいようお願いいたします。
・本製品のはんだ付けはリフローはんだ工法に限ります。

【Recommended Land Patterns】
Surface Mounting
・Mounting and soldering conditions should be checked beforehand.
・Applicable soldering process to these products is reflow soldering only.



SMD Power Inductors (NR series/NR series H type/S type /V type)

Type	A	B	C
NRS6010			
NR 6012, NRS6012			
NRS6014	1.6	4.7	5.7
NR 6020, NRS6020			
NR 6028, NRS6028			
NR 6045, NRS6045			

unit: mm

2013.09.23

The data is reference only. Electrical characteristics vary depending on environment or measurement condition.
TAIYO YUDEN reserves the right to make change to the Date at any time without notice.
Before making final selection, please check product specification.