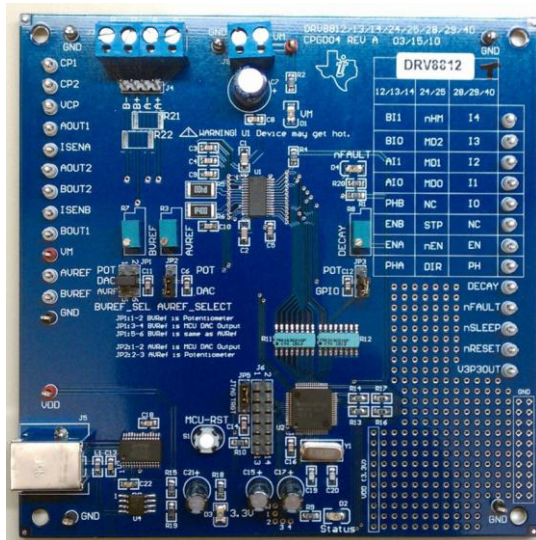


Evaluation module for DRV8812

DRV8812EVM



Description

The DRV8812EVM is a dual bridge motor driver evaluation module that includes device, cabling and software to ease the evaluation of the device when driving a customer's motor.

Features

- DRV8812 dual bridge motor driver
- Easy to use GUI to allow for easy setup
- Includes all necessary cabling and software to control DRV8812

What's Included

- DRV8812 Evaluation Module
- MCU Control Software Source Code
- Easy to Use GUI
- USB Cable