

AC Current Simple Logger® Models L100 & L110



Specifications

ELECTRICAL

Number of Channels: One

Measurement Range: 0 to 10,000Arms
(requires optional current probe)

Input:

0 to 1Vrms (L100)

0 to 1Arms (L110)

Input Connection:

Recessed Safety 4mm Banana Jacks

Resolution:

8 Bit
(Max Resolution depends on Probe)

Accuracy*: ±1% of Reading + Resolution
+ probe accuracy

Sample Rate: 4096/hr max, decreases
by 50% each time memory is full

Storage Technique:

Time Extension Recording™ (TXR™)

Data Storage: 8192 readings

Power: 9V Alkaline battery

Battery Life:

Up to 1 yr of recording @ 25°C

Output: RS-232 via DB-9 connector

Indicators: Red LED double flashes in
LOGGING, single flashes in STANDBY,
and is off in OFF mode

Controls: One button used to start and
stop recording sessions and to turn the
data logger on and off

MECHANICAL

Size: 2 7/8 x 2 5/16 x 1 5/8"

(73 x 59 x 41mm)

Weight: (with battery) 5 oz (140g)

Mounting: Base plate mounting holes or
Velcro® pads

ENVIRONMENTAL

Operating Temperature:

-4 to +158°F (-20 to +70°C)

Storage Temperature:

-4 to +174°F (-20 to +80°C)

Relative Humidity:

5 to 95% non-condensing

*Note: See pages 4 and 5 for compatible
AEMC current probes.*

Features

- Supports wide range of current probes with voltage or current outputs*
- Two input types to choose from:
Model L100
Use current probes with VAC output
0 to 1Vrms input
0 to 10,000Arms based on probe
Model L110
Use current probe with AAC output
0 to 1Arms input
0 to 3000Arms based on probe
- True RMS measurements
- Inputs via color-coded safety banana jacks
- Select scale via software to match probe
- RS-232 output
- One button operation
- Accuracy: ±1% of Reading + Resolution
- Double Insulation
- CE Mark

Applications

- Machine load monitoring
- Metering CT re-sizing
- Load profiling
- Fault finding

ORDERING INFORMATION

Simple Logger® Model L100, RMS Current (0 to 1VAC Input) **Cat. #2113.50**

Simple Logger® Model L110, RMS Current (0 to 1AAC Input) **Cat. #2113.85**

All AC Current Simple Loggers® are supplied with software (CD-ROM), 6 ft DB-9 RS-232 cable, 9V Alkaline battery and user manual

Accessories

See pages 4 and 5 for compatible AEMC current probes

CATALOG NO.



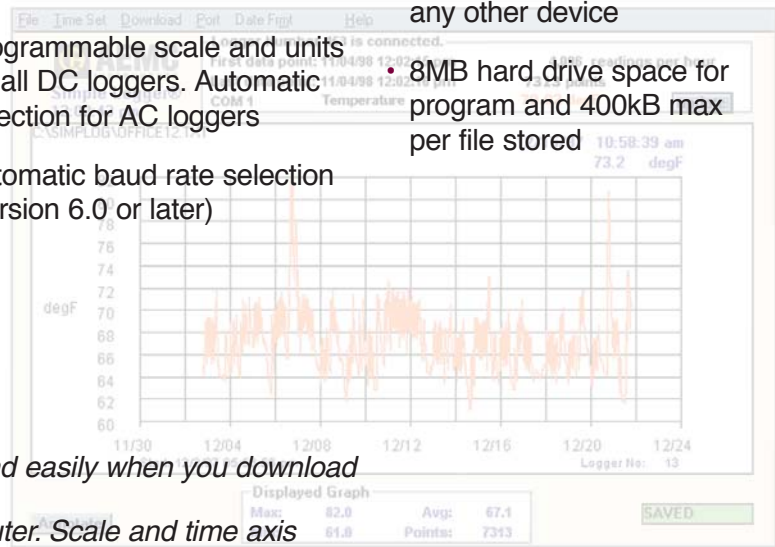
Simple Logger® Software

Features

- Very easy to setup and use — no programming required
- Statistics appear on screen: Max, Min, Avg, Date and Time
- On-Line display of data logger values
- Zoom capability with automatic statistics update
- User keyed text annotations
- Automatically displays values at the cursor position
- Export data to spreadsheet and database software
- Print both graphs and tabular listings
- Paste graphs into other applications
- Programmable scale and units for all DC loggers. Automatic selection for AC loggers
- Automatic baud rate selection (version 6.0 or later)

Computer Requirements

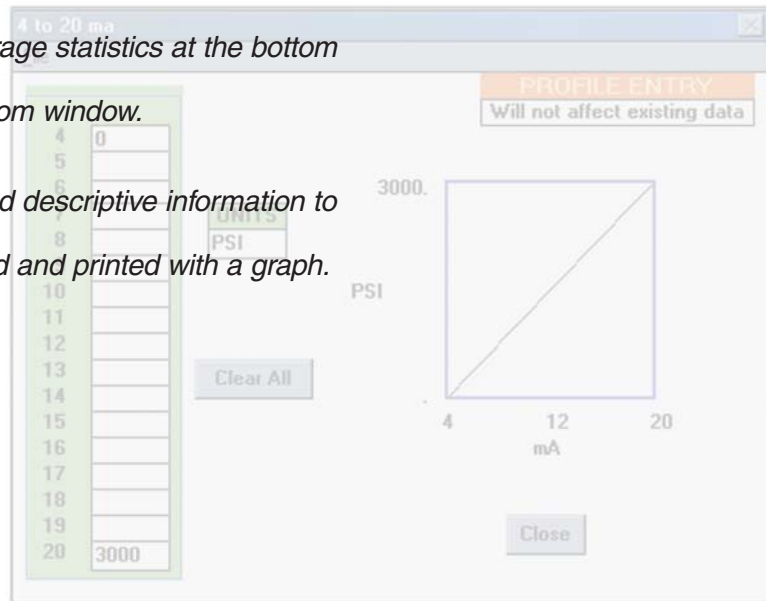
- 486 or higher
- 8MB of RAM
- Windows®95/98/2000/ME/XP or Windows®NT
- 1 serial port not in use by any other device
- 8MB hard drive space for program and 400kB max per file stored



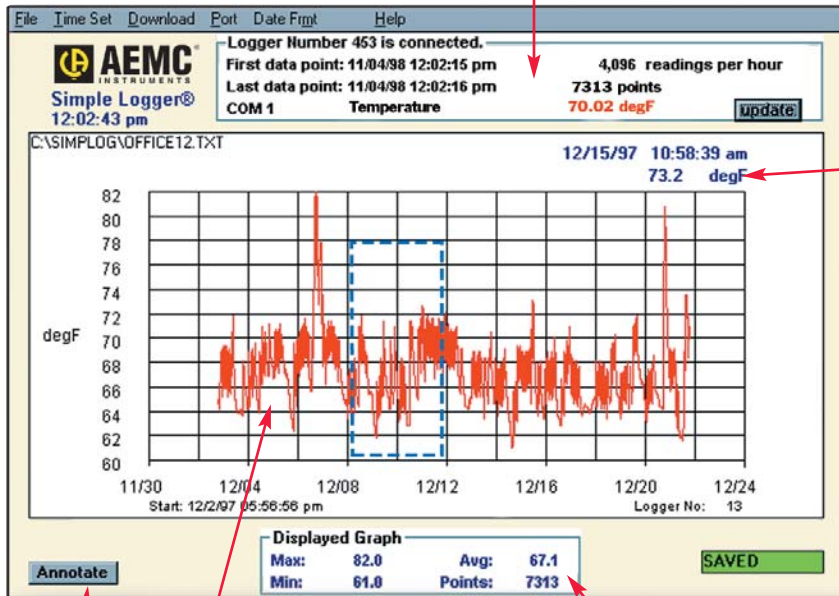
Plot graphs and view statistics quickly and easily when you download data from Simple Logger® to your computer. Scale and time axis update automatically.

Click and drag your mouse to zoom up the desired area of the graph for better viewing. The Min, Max and Average statistics at the bottom of the graph update automatically with zoom window.

Click the Annotate button to add a title and descriptive information to your graph. This information can be stored and printed with a graph.



On-line display of data

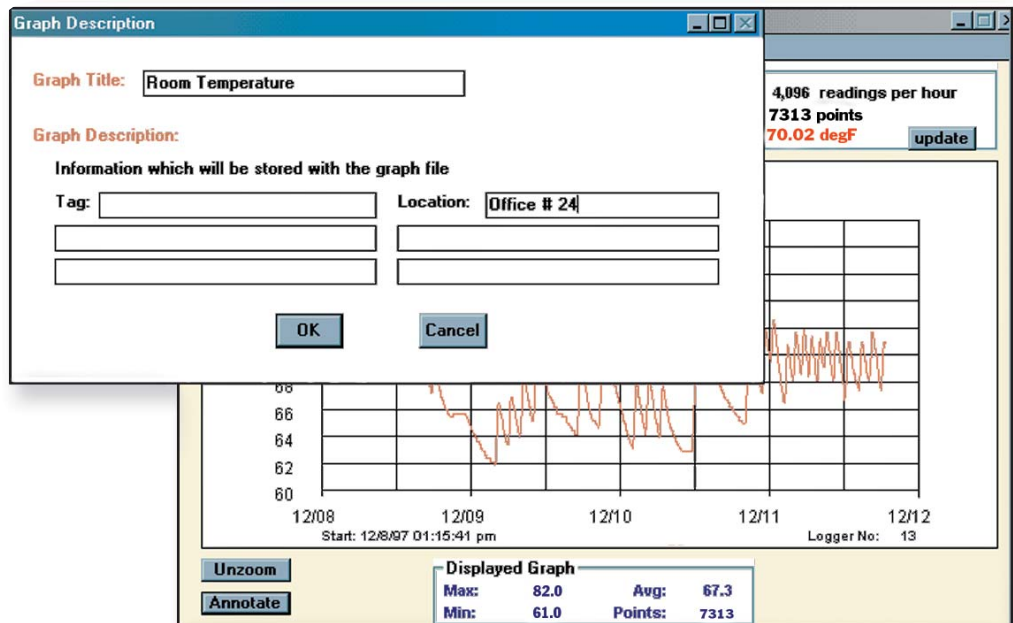


Automatic update of Y data at cursor position

Annotate button

Plot area with value and time data shown on the X and Y axis

Graph Statistics





Click the Annotate button to add a title and descriptive information to your graph. This information can be stored and printed with a graph.

Accessories



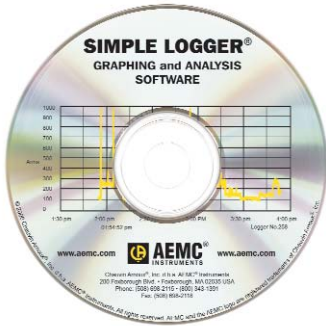
Split Core AC and DC Current Probes

Current Probe and Simple Logger® Compatibility

Series	Probe Model	Ratio	Measurement Range		Output Signal		Output Connection	Catalog No.	Logger Model
			AC	DC	Current	Voltage			
 $\phi = 0.78"$	MN211	1000:1	0.5 to 240A	–	1mAac/Aac	–	Lead	2115.73	L110
	MN213	1000:1	0.5 to 240A	–	1mAac/Aac	–	Lead	2115.75	L110
	MN251	–	0.1 to 240A	–	–	1mVAc/Aac	Lead	2115.77	L100
	MD301	–	2 to 500A	–	–	1mVdc/Aac	Lead	1201.07	L430
	MD303	1000:1	4 to 500A	–	1mAac/Aac	–	Lead	1201.21	L110
	MD305	1000:1	1 to 600A	–	1mAac/Aac	–	Lead	1201.36	L110
 $\phi = 1.18"$	MD314	–	4 to 500A	–	–	1mVAc/Aac	Lead	2110.75	L100
	MR410*	–	1 to 400A –	– 1 to 600A	– –	1mV/Aac 1mV/Aac	Lead Lead	1200.70 1200.70	L100 (AC) L430 (DC)
	MR411*	–	0.2 to 40A 0.5 to 400A	– 0.5 to 600A	– –	10mV/Aac 1mV/Aac	Lead	1200.68	L100 (AC)
 $\phi = 1.18"$			– –	0.4 to 60A 0.5 to 600A	– –	10mV/Aac 1mV/Aac	Lead	1200.68	L430 (DC)
	MR520*	–	1 to 1000A –	– 1 to 1500A	– –	1mV/Aac/dc 1mV/Aac/dc	Lead	1200.71	L100 (AC) L430 (DC)
	MR521*	–	0.2 to 100A 0.5 to 1000A	0.4 to 150A 0.5 to 1500A	– –	10m V/Aac 1mV/Aac	Lead	1200.69	L100 (AC)
 $\phi = 1.6"$			0.2 to 100A 0.5 to 1000A	0.4 to 1500A 0.5 to 1500A	– –	10mV/Aac 1mV/Aac	Lead	1200.69	L430 (DC)
			0.2 to 100A 0.5 to 1000A	0.4 to 1500A 0.5 to 1500A	– –	10mV/Aac 1mV/Aac	Lead	1200.69	L430 (DC)
			0.5 to 1000A	0.5 to 1500A	–	1mV/Aac	Lead	1200.69	L430 (DC)
 $\phi = 2.05"$	SR604	1000:1	0.1 to 1000A	–	1mAac/Aac	–	Lead	2113.44	L110
	SR652	–	0.1 to 1000A	–	–	1mVAc/Aac	Lead	2113.46	L100
	SR704	1000:1	1mA to 1000A	–	1mAac/Aac	–	Lead	2116.30	L110
	SR752	–	0.1 to 1000A	–	–	1mVAc/Aac	Lead	2116.32	L100

*Caution: Do not use DC loggers with AC probes or AC loggers with DC Probes
 Not all models are UL approved; please consult factory

Flexible Current Probe and Simple Logger® Compatibility



2114.26
Simple Logger® Software Upgrade for all models (Receive software upgrade notices when warranty registration is on file)



2111.31
Safety Grip Probes, set of 2



Flexible Probes for use with Simple Logger® Model L100

24" Flexible Probes

Catalog No.	Probe Model	Range	Ratio
2112.20	200-24-1-1	200A	1mV/A
2112.24	300-24-1-1	300A	1mV/A
2112.34	500-24-1-1	500A	1mV/A
2112.39	1000-24-1-1	1000A	1mV/A
2112.62	6000-24-1-0.1	6000A	0.1mV/A
2112.70	10000-24-1-0.1	10,000A	0.1mV/A
2112.93	500-24-2-1	50/500A	10/1mV/A
2112.98	1000-24-2-1	100/1000A	10/1mV/A
2113.19	6000-24-2-0.1	600/6000A	1/0.1mV/A
2113.27	10000-24-2-0.1	1000/10,000A	1/0.1mV/A
2114.87	3000-24-2-0.3	300/3000A	3.3/0.3mV/A

36" Flexible Probes

Catalog No.	Probe Model	Range	Ratio
2112.02	10000-36-2-0.1	1000/10,000A	1/0.1mV/A
2112.41	1000-36-1-1	1000A	1mV/A
2112.64	6000-36-1-0.1	6000A	0.1mV/A
2112.72	10000-36-1-0.1	10,000A	0.1mV/A
2113.00	1000-36-2-1	100/1000A	10/1mV/A
2113.21	6000-36-2-0.1	600/6000A	1/0.1mV/A
2114.88	3000-36-2-0.3	300/3000A	0.3/3.3mV/A

48" Flexible Probes

Catalog No.	Probe Model	Range	Ratio
2112.03	10000-48-2-0.1	1000/10,000A	1/0.1mV/A
2112.42	1000-48-1-1	1000A	1mV/A
2112.65	6000-48-1-0.1	6000A	0.1mV/A
2112.73	10000-48-1-0.1	10,000A	0.1mV/A
2113.01	1000-48-2-0.1	100/1000A	10/1mV/A
2113.22	6000-48-2-0.1	600/6000A	1/0.1mV/A

60" Flexible Probes

Catalog No.	Probe Model	Range	Ratio
2112.74	10000-60-1-0.1	10,000A	0.1mV/A
2113.29	10000-60-2-0.1	1000/10,000A	1/0.1mV/A



LongLife AmpFlex™ for use with Simple Logger® Model L100

24" Flexible Probes

Catalog No.	Probe Model	Range	Ratio
2120.66	1000-24-1-1	1000A	0.1mV/A
2120.67	1000-24-2-1	100/1000A	10mV/1mmV/A

36" Flexible Probes

Catalog No.	Probe Model	Range	Ratio
2120.68	3000-36-1-1	3000A	0.3mV/A
2120.69	3000-36-2-1	300/3000A	0.3mV/3.3mV/A

Contact Us

United States & Canada:

Chauvin Arnoux[®], Inc.
d.b.a. AEMC[®] Instruments
200 Foxborough Blvd.
Foxborough, MA 02035 USA
(508) 698-2115 • Fax (508) 698-2118
www.aemc.com

Customer Support – for placing an order, obtaining price & delivery:
customerservice@aemc.com

Sales Department – for general sales information:
sales@aemc.com

Repair and Calibration Service – for information on repair & calibration, obtaining a user manual:
repair@aemc.com

Technical and Product Application Support – for technical and application support:
techinfo@aemc.com

Webmaster – for information regarding www.aemc.com:
webmaster@aemc.com

South America, Central America, Mexico, Caribbean, Australia & New Zealand:

Chauvin Arnoux[®], Inc.
d.b.a. AEMC[®] Instruments
15 Faraday Drive
Dover, NH 03820 USA
(978) 526-7667 • Fax (978) 526-7605
export@aemc.com
www.aemc.com

All other countries:

Chauvin Arnoux SCA
190, rue Championnet
75876 Paris Cedex 18, France
33 1 44 85 45 28 • Fax 33 1 46 27 73 89
info@chauvin-arnoux.com
www.chauvin-arnoux.com