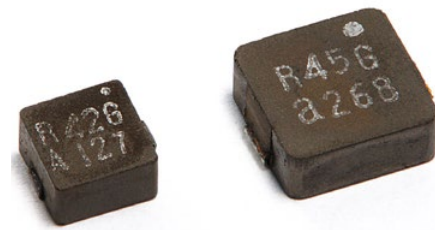


Overview

KEMET's MPCG Series of metal composite inductors is designed with a very low loss core and flat wire design, which enables very high efficiency at high ripple currents. The core material used is ideal for high switching frequency applications.

Applications

- Switching DC-DC power supplies
- Notebook computers
- Tablets
- Embedded computer systems
- HDTVs
- DVD and BluRay players



Part Number System

MPCG	1040	L	R45
Series	Size L x W (mm)	Inductor	Inductance Code μ H
MPCG	0730 0740 1040		R = decimal point Example: R45 = 0.45 μ H

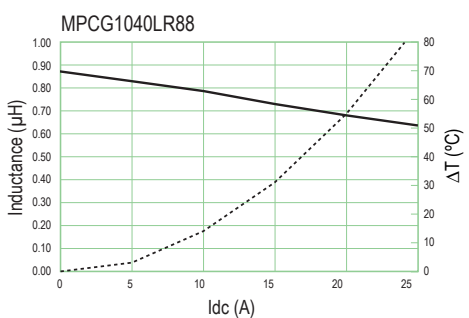
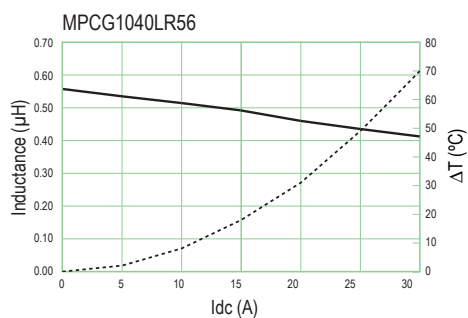
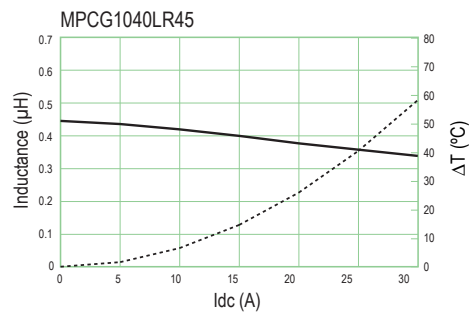
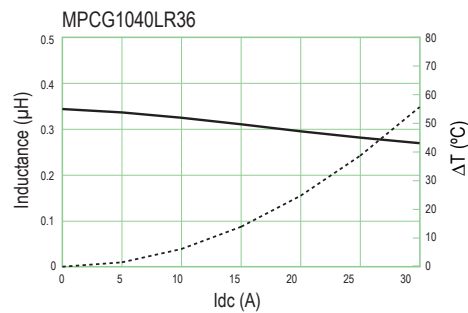
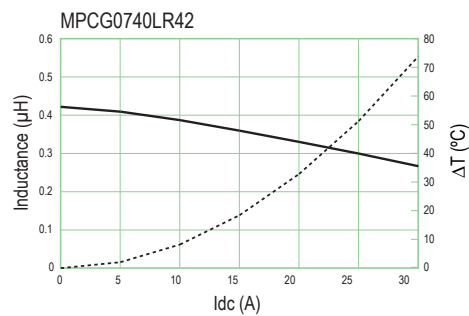
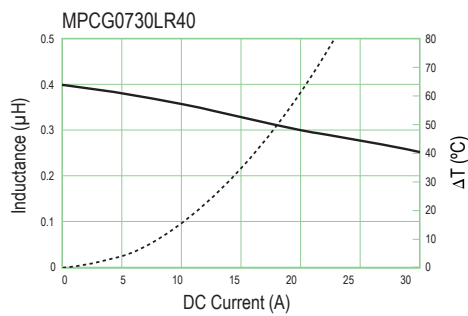
Table 1 – Ratings & Part Number Reference

Part Number	Inductance (μH) @ 100 kHz	DC Resistance ($\text{m}\Omega$) Maximum	Rated Current (A)	
			I_{rms}^1 (Ref.)	I_{sat}^2 (Ref.)
MPCG0730LR40	0.40 \pm 20%	2.60 \pm 10%	16.0	16.0
MPCG0740LR42	0.42 \pm 20%	1.55 \pm 10%	22.0	20.0
MPCG1040LR36	0.36 \pm 20%	1.05 \pm 10%	25.0	30.0
MPCG1040LR45	0.45 \pm 20%	1.10 \pm 10%	25.0	27.0
MPCG1040LR56	0.56 \pm 20%	1.30 \pm 10%	23.0	23.0
MPCG1040LR88	0.88 \pm 20%	2.30 \pm 10%	17.0	19.0

¹ $T = 40\text{ K}$ rise at rated current.

² Inductance drop 20% at rated current.

DC-Superposed Characteristics



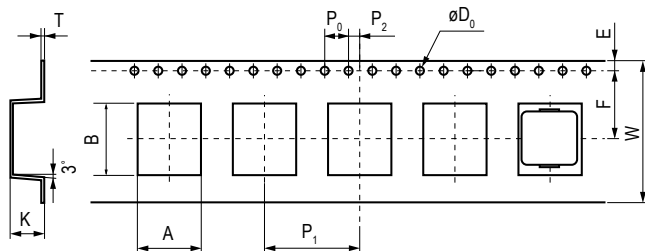
Specifications

Part Number	Dimensions (mm)	Land Pattern
MPCG0730LR40		
MPCG0740LR42		
MPCG1040LR36 MPCG1040LR45 MPCG1040LR56 MPCG1040LR88		

Operating temperature range: -20°C to +120°C (Include self temperature rise)

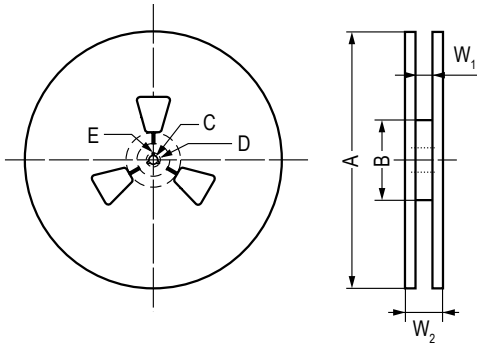
Taping Specification

Dimensions of indented square hole plastic tape



Series	Reel Qty		Dimensions (mm)											
			A	B	W	F	E	P ₁	P ₂	P ₀	øD ₀	T	K	
MPCG0730 MPCG0740	1,000	Tolerance	±0.1	±0.1	±0.2	±0.1	±0.1	±0.1	±0.1	±0.1	±0.1	±0.05	±0.05	±0.1
Nominal		7.0	8.0	16.0	7.5	1.75	12.0	2.0	4.0	1.55	0.4	5.3		
MPCG1040	500	Tolerance	±0.1	±0.1	±0.2	±0.1	±0.1	±0.1	±0.1	±0.1	±0.05	±0.05	±0.1	
		Nominal	10.5	12.1	24.0	11.5	1.75	16.0	2.0	4.0	1.55	0.4	5.2	

Reel Specifications



Series		Dimensions (mm)							
		A	B	C	D	E	r	W ₁	W ₂
MPCG0730	Tolerance	±2.0	±1.0	±0.2	±0.8	±0.5		±1.0	±1.0
MPCG0740	Nominal	ø330	ø80	ø13.0	ø21.0	2.0	R1.0	17.5	21.5
MPCG1040	Tolerance	±5.0	±5.0	±0.5	±1.0	±0.5		±2.0	±3.0
	Nominal	ø330	ø80	ø13.5	ø21.0	2.0	R1.0	24.4	30.4

KEMET Corporation World Headquarters

2835 KEMET Way
Simpsonville, SC 29681

Mailing Address:
P.O. Box 5928
Greenville, SC 29606

www.kemet.com
Tel: 864-963-6300
Fax: 864-963-6521

Corporate Offices
Fort Lauderdale, FL
Tel: 954-766-2800

North America

Southeast
Lake Mary, FL
Tel: 407-855-8886

Northeast
Wilmington, MA
Tel: 978-658-1663

Central
Novi, MI
Tel: 248-994-1030

West
Milpitas, CA
Tel: 408-433-9950

Mexico
Guadalajara, Jalisco
Tel: 52-33-3123-2141

Europe

Southern Europe
Paris, France
Tel: 33-1-4646-1006

Sasso Marconi, Italy
Tel: 39-051-939111

Central Europe
Landsberg, Germany
Tel: 49-8191-3350800

Kamen, Germany
Tel: 49-2307-438110

Northern Europe
Bishop's Stortford, United Kingdom
Tel: 44-1279-460122

Espoo, Finland
Tel: 358-9-5406-5000

Asia

Northeast Asia
Hong Kong
Tel: 852-2305-1168

Shenzhen, China
Tel: 86-755-2518-1306

Beijing, China
Tel: 86-10-5829-1711

Shanghai, China
Tel: 86-21-6447-0707

Taipei, Taiwan
Tel: 886-2-27528585

Southeast Asia
Singapore
Tel: 65-6586-1900

Penang, Malaysia
Tel: 60-4-6430200

Bangalore, India
Tel: 91-806-53-76817

Note: KEMET reserves the right to modify minor details of internal and external construction at any time in the interest of product improvement. KEMET does not assume any responsibility for infringement that might result from the use of KEMET Capacitors in potential circuit designs. KEMET is a registered trademark of KEMET Electronics Corporation.

Disclaimer

This product has been made available through a Private Label Agreement and a Development and Cross-Licensing Agreement between KEMET and NEC TOKIN to expand market and product offerings for both companies and their respective customers. For more information, please visit <http://www.kemet.com/nectokin>.

All product specifications, statements, information and data (collectively, the "Information") in this datasheet are subject to change. The customer is responsible for checking and verifying the extent to which the Information contained in this publication is applicable to an order at the time the order is placed.

All Information given herein is believed to be accurate and reliable, but it is presented without guarantee, warranty, or responsibility of any kind, expressed or implied.

Statements of suitability for certain applications are based on KEMET Electronics Corporation's ("KEMET") knowledge of typical operating conditions for such applications, but are not intended to constitute – and KEMET specifically disclaims – any warranty concerning suitability for a specific customer application or use. The Information is intended for use only by customers who have the requisite experience and capability to determine the correct products for their application. Any technical advice inferred from this Information or otherwise provided by KEMET with reference to the use of KEMET's products is given gratis, and KEMET assumes no obligation or liability for the advice given or results obtained.

Although KEMET designs and manufactures its products to the most stringent quality and safety standards, given the current state of the art, isolated component failures may still occur. Accordingly, customer applications which require a high degree of reliability or safety should employ suitable designs or other safeguards (such as installation of protective circuitry or redundancies) in order to ensure that the failure of an electrical component does not result in a risk of personal injury or property damage.

Although all product-related warnings, cautions and notes must be observed, the customer should not assume that all safety measures are indicated or that other measures may not be required.