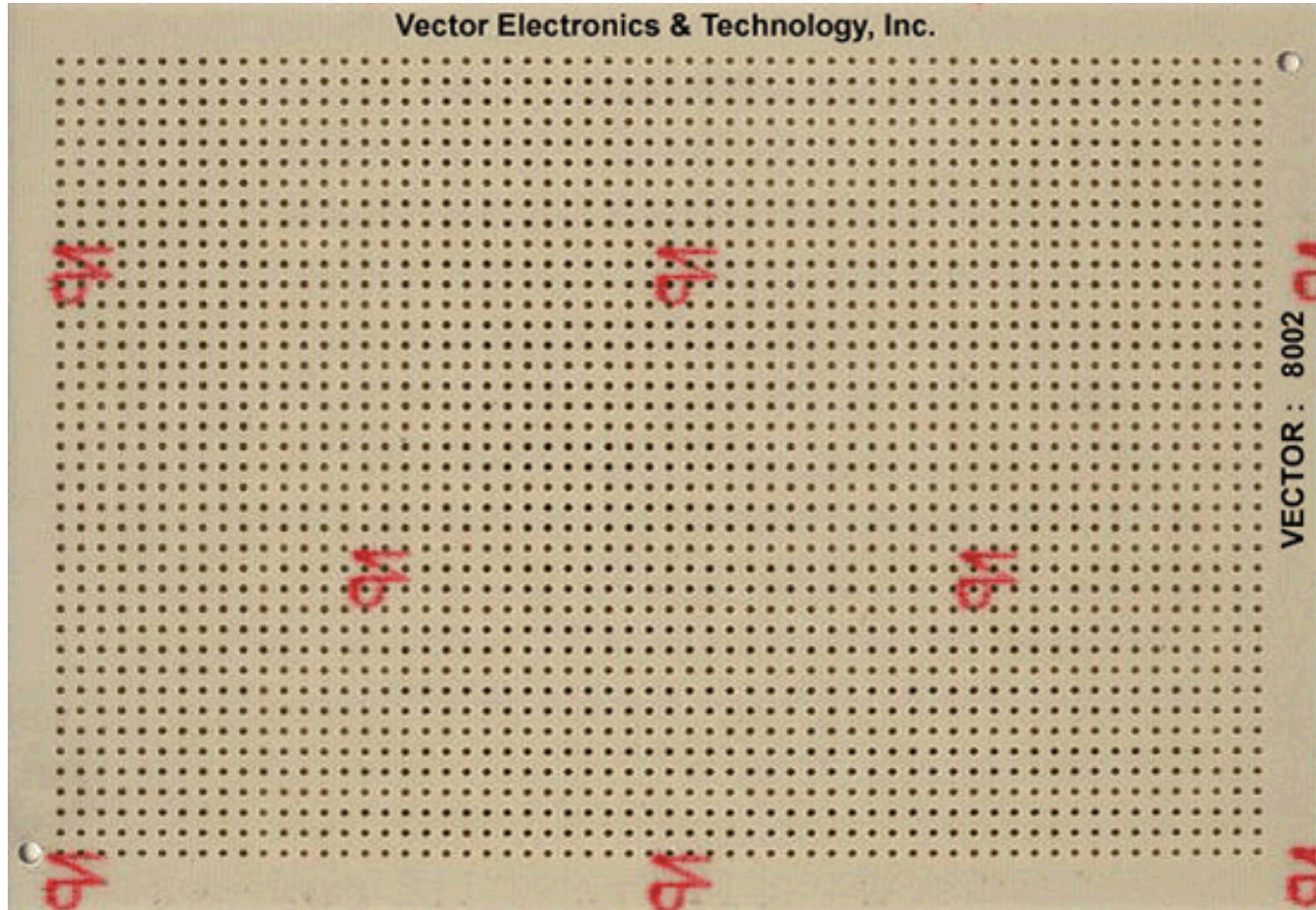


VECTORBORD® CIRCBORD™ PART NO. : 8002



Description :

4.5" x 6.50", Hole Dia.: 0.042", Grid: 0.100" x 0.100"
Interleaved Buses Pattern, Ideal for wire-wrap applications
Power and ground buses etched onto wiring side only
Bus surfaces solder coated for user convenience
Mount components with 0.3", 0.6" & 0.9" lead spacing
I/O area with square solder pads for mounting connector
Single-sided with no etch & plating on reverse side

Circuit Pattern :	Interleaved Buses
Contacts :	N/A
16 Pin DIP Capacity :	36
Hole Diameter :	0.042" { 1.0668 mm }
Grid :	0.100" x 0.100" { 2.54mm X 2.54mm }
Dimension { H, W, T } :	4.50" x 6.50" x 0.062"
Material :	CEM-1
Wire-Wrap Terminals :	T44, T46, T49, T68
Solder Terminals :	T42-1
Wire-Wrap Socket Pins :	R32
NEMA Grade :	CEM-1
UL Flammability Class :	94V - 0