



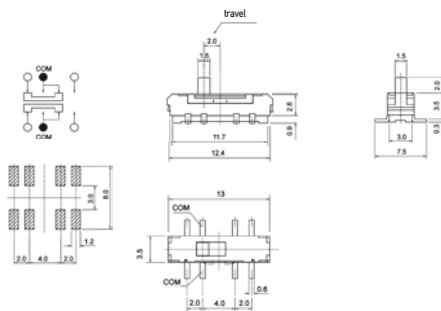
Microminiature Slide Switches for SMT

Specifications:

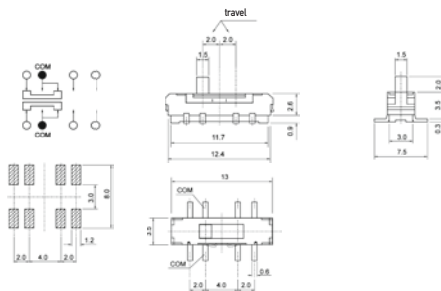
Contact rating:	12 V DC, 200 mA / 6 V DC, 300 mA
Contact resistance:	< 70 mΩ
Insulation resistance:	> 100 MΩ at 500 V DC
Dielectric strength:	500 V, 50 Hz for the duration of 1 minute
Operating temperature:	- 10 °C to + 60 °C
Mechanical life:	MMS 228 T: minimum 10 000 operations MMS 238 T: minimum 5 000 operations
Contacts/Terminals:	copper alloy, silver-plated
Contact timing:	non-shorting
Slide colour:	blue

Models: Switching functions

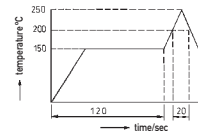
MMS 228 T on on



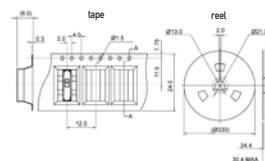
MMS 238 T on on on



Soldering conditions: reflow-soldering – max.: 20 sec, 200° C
peak temperature: 250° C



Packing: on tapes, 900 pieces / tape



Microminiature Slide Switches

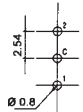
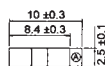
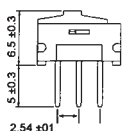
Specifications:

Contact rating:	0,2A, 24 V DC / 0,5A, 12 V DC
Contact resistance:	< 50 mΩ
Insulation resistance:	> 10 000 MΩ at 500 V DC
Dielectric strength:	500 V, 50 Hz for the duration of 1 minute
Operating temperature:	-25 °C to +70 °C
Mechanical life:	minimum 10 000 operations
Contacts:	phosphor bronze, gold-plated
Terminals:	brass, gold-plated
Soldering conditions:	MMP: auto-soldering – max.: 3 sec, 260 °C ± 3 °C MMS: reflow-soldering – max.: 5 sec, 260 °C ± 3 °C

Models: Switching functions

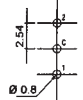
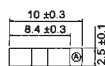
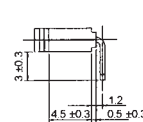
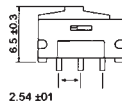
MMP 1010 D

on on



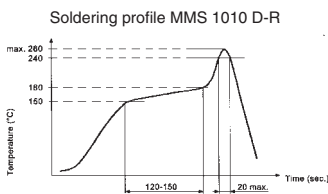
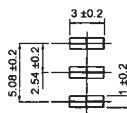
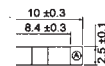
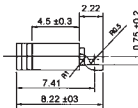
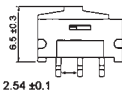
MMP 1010 D-RA

on on



MMS 1010 D-R

on on





Microminiature Slide Switches

Specifications:

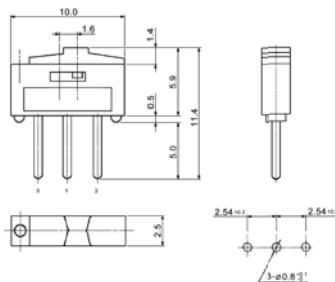
Contact rating:	24 V AC/DC, 0,3A / 12 V AC/DC, 0,5A
Contact resistance:	< 50 mΩ
Insulation resistance:	> 500 MΩ at 500 V DC
Dielectric strength:	500 V for the duration of 1 minute
Operating temperature:	- 40 °C to + 85 °C
Mechanical life:	minimum 10 000 operations
Contacts:	brass, gold-plated
Terminals:	brass, gold-plated
Case:	PA
Soldering conditions:	auto-soldering – max.: 5 sec ± 0,5 sec, 270 °C ± 5 °C

Models

Switching functions

MMP 1010 D – 1

on on



MMP 1010 D-RA – 1

on on

