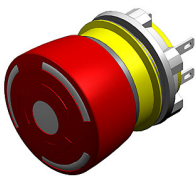


EAO – Your Expert Partner for Human Machine Interfaces

84-5140.0020 - Emergency-stop switch complete, foolproof EN IEC 60947-5-5

84-5140.0020 - Emergency-stop switch complete, foolproof EN IEC 60947-5-5



Attention: The preview is based on a sample product. This can differ from your current configuration.

Mounting

Mounting cut-out
Design Ø 22.5 mm
raised

Front

Front dimension
Front shape Ø 32 mm
round

Other Attributes

Weight 0.028 kg

Operating-/Indication part

Lens material Plastic
Lens colour red
Lens profile Mushroom
Lens optics opaque

IP-Rating

Front protection IP 65

Connection Method

Terminal Plug 2.8 x 0.5 mm

Actuator

Switching action Maintained

Switching element

Switching voltage 250 V AC/DC
Switching current 5 A
Switching system Slow-make switching element
Contacts 2 NC
Contact material Gold

Illumination

LED colour

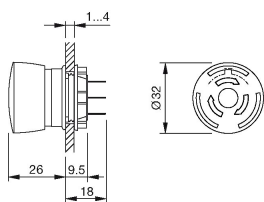
Function

Emergency stop switch

EAO – Your Expert Partner for Human Machine Interfaces

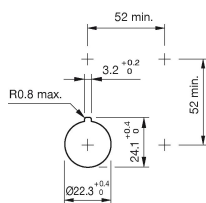
84-5140.0020 - Emergency-stop switch complete, foolproof EN IEC 60947-5-5

Dimensions

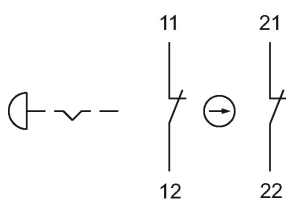


P = Plug-in terminal 2.8 x 0.5 mm

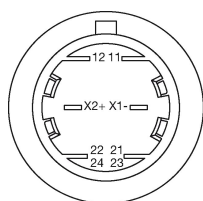
Mounting cut-outs



Wiring diagram



Component layout



Additional information

Twist to unlock clockwise

Position indication ring green

Application as per DIN EN ISO 13850 and EN 60204-1

Standard version: Flat ribbon-cable length 300 mm or plug-in terminal 2.8 x 0.5 mm

Other options on request: Customisation of flat ribbon-cable and connectors

Legend

Contacts: NC = Normally closed, NO = Normally open