

OLYMPUS

CAMEDIA

C-120

Digital Compact Camera

THE VISIBLE DIFFERENCE

NEW

Easy-To-Use 2.0 Megapixel Compact Digital Camera





Smile And Go! With The CAMELIA C-120

Laughing friends. Cats basking in the sun. A vast blue sea... Savor these shots on the CAMELIA C-120's monitor or a PC. Then, show them to friends or family as e-mails or beautiful prints. A ton of other functions give you even more good times.

The CAMELIA C-120 lets you share your happiness with everyone.

2.0 Megapixel & 4.5mm Lens

The high-quality 2.0 effective megapixels and optical 4.5mm lens* capture images clearly and vibrantly.

*Equivalent to a 35mm lens on a 35mm camera.

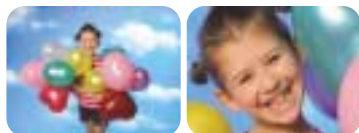


Image Taken with the CAMELIA C-120 (1600x1208 Pixels/SHQ)

5X Digital Zoom

You can enjoy up to 5X* telephoto shooting for fantastic close-ups.

*In SQ2 mode. Up to 2.5X in other modes.



Normal Shooting

5X Digital Zoom

Exposure Compensation

The CAMELIA C-120 controls exposure automatically. $\pm 2EV$ exposure compensation in 1/2 stops is also possible.

Auto & Preset White Balance

In addition to Auto, the white balance can be preset for daylight, overcast, tungsten, and fluorescent light.

2-In-1 Images

You can combine a shot with the one taken right after for interesting composite photos.



1st Shot

2nd Shot

Combined Picture

Motion JPEG Image Recording

With the included 8MB SmartMedia card, movie recording up to approx. 60 sec. in SQ mode or 15 sec. in HQ mode is possible.



Motion JPEG Image Recording

Two Convenient Memory Types

You can record images not only to a SmartMedia card but also to the camera's internal memory.

USB AutoConnect

Simply connect the included USB cable from the camera to your PC, then download your images. You can also transfer images using the optional FlashPath or PC card adaptor.



And More...

- Macro Mode
- Digital ESP (Electro-Selective Pattern) & Spot Light Metering
- Auto Sensitivity Settings
- Quick Sequence Shooting
- Several Flash Modes
- Optical Viewfinder & LCD Monitor
- A Variety Of Image Sizes
- Extra-Long Battery Life

• All the sample shots in this catalogue were taken with the CAMELIA C-120.

CAMELIA C-120 Digital Camera Specifications

Recording system	Still image: JPEG with DCF (Design rule for Camera File system) and DPOF (Digital Print Order Format) support, Motion JPEG image: QuickTime Motion JPEG support	Exposure compensation	$\pm 2EV$ (1/2EV increments)
Memory	3V (3.3V) SmartMedia (4MB, 8MB, 16MB, 32MB, 64MB, 128MB), Internal memory 1MB	Sensitivity	Auto (ISO 100 - 400)
No. of storable pictures (When using an 8MB SmartMedia. [] for 1MB internal memory.)	Approx. 5 [0] shots (SHQ: Super High Quality mode) Approx. 16 [2] shots (HQ: High Quality mode) Approx. 29 [3] shots (SQ1: Standard Quality mode 1) Approx. 47 [5] shots (SQ2: Standard Quality mode 2)	Focusing	Focus free: 0.6m - ∞ (Normal mode), 0.25m - ∞ (Macro mode)
No. of effective pixels	2.0 Megapixel	White balance	Full auto TTL, Preset (daylight, overcast, tungsten, fluorescent light)
Image pickup element	1/3.2 inch CCD solid-state image pickup device, total 2.1 Megapixel	Viewfinder	Optical real-image viewfinder, LCD monitor
Recording image	1,600 x 1,208 pixels (SHQ mode), 1,600 x 1,200 pixels (HQ mode), 1,024 x 768 pixels (SQ1 mode), 640 x 480 pixels (SQ2 mode)	LCD monitor	4.1cm TFT colour LCD display, approx. 61,000 pixels
Lens	Olympus lens 4.5mm (35mm on a 35mm camera), F4, 5 elements in 5 groups	Flash modes	Auto (automatic flash activation in low light and backlight), Red-Eye Reducing, Off (no flash), Fill-In (forced activation), Night Scene, Night Scene+Red-Eye Reducing
Digital Zoom	1x - 2.5x (up to 5x in SQ2 mode)	Flash working range	Approx. 0.25m - 2.5m (ISO 100)
Photometric system	Digital ESP light metering, Spot light metering	Sequence mode	Up to 8 pictures can be taken in sequence at 1.5 frames per second. (When in HQ mode. Other modes will vary.)
Exposure control	Programmed auto exposure (Manual setting not available) Aperture: F4, F8, Shutter: 1/2 - 1/2,000 sec., up to 1 sec. in Night Scene mode (used with mechanical shutter)	Motion JPEG image recording	Up to approx. 15 sec. 320 x 240 pixels (HQ mode), up to approx. 60 sec. 160 x 120 pixels (SQ mode). (When using an 8MB SmartMedia.)
		Outer connectors	DC-IN jack, USB connector (Storage-Class)
		Power supply	Two CR-V3 lithium battery packs (Olympus: LB-01 2PE), or four AA NI-MH batteries, AA alkaline batteries, or AA Ni-Cd batteries (Do not use zinc-carbon batteries). Optional AC adaptor.
		Dimensions/Weight	123 (W) x 65 (H) x 44.5 (D) mm/Approx. 190g (without batteries/card)

- QuickTime is a trademark of Apple Computer, Inc.
- All other company and product names are registered trademarks and/or trademarks or their respective owners.
- The pictures (shown in this catalogue) of the LCD and PC monitors are simulated.
- Specifications and appearances are subject to change without any notice or obligation on the part of the manufacturer.