

rotronic

Datenblatt - Fiche technique - Data sheet

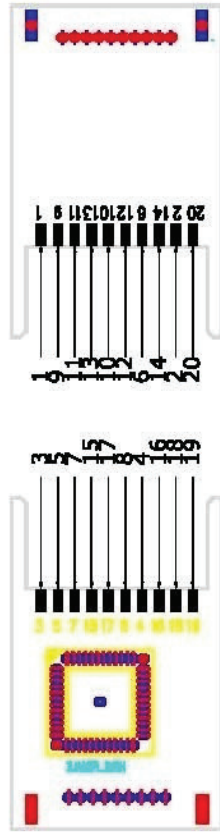
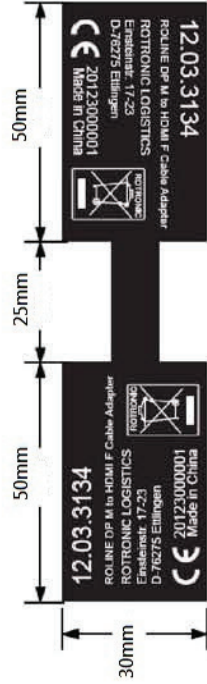
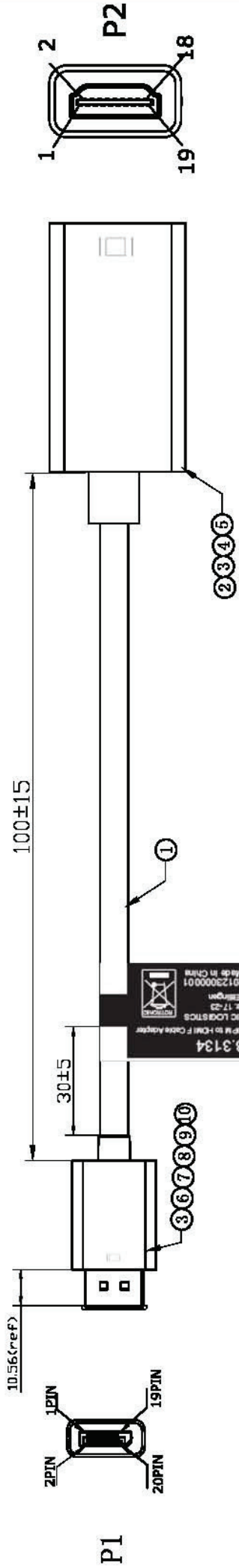
12.03.3134



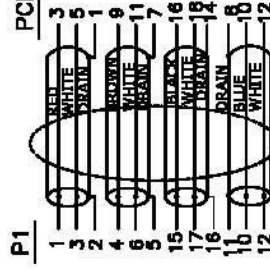
ROLINE DisplayPort-HDMI Adapter, DP Stecker-HDMI Buchse,

ROLINE Adaptateur DisplayPort – HDMI, DP M-HDMI F,

ROLINE DisplayPort-HDMI Adapter, DP M – HDMI F,



PIN Assignment



NO	DESCRIPTION	Q'TY	UNIT	PCS
10	PCB			1
9	DisplayPort M ABS FRONT SHELL WHITE			1
8	DisplayPort M ABS SHELL WHITE MARKING: □ (PT-COOL GREY 8C)			1
7	DisplayPort M SHELL NICKEL PLATED PIN GOLD PLATED WITHOUT HOOD			1
6	DisplayPort M DUST CAP			1
5	HDMI F (miniDP to HDMI) ABS FRONT SHELL WHITE			1
4	HDMI (miniDP to HDMI PCB) ABS SHELL WHITE MARKING: □ (PT-COOL GREY 8C)			1
3	6SP WHITE PVC	5	g	1
2	DP TO HDMI F (SHELL NICKEL PIN GOLD PLATED) PCB+SMT+SOLDER	1	pcs	1
1	Display Port UL20276 [34AWG (7/0.08TC)*1PR+EAM)*6+32AWG (7/0.08TC)*6C +D(8C)+AB 85% (16/7/0.12AL) OD:4.5MM WHITE	L	M	1
NO	DESCRIPTION	Q'TY	UNIT	PCS

TOLERANCE	INCHES	M/M
⌀	.X	.30
	.XX	.10
	.XXX	.05

rotronic		ROLINE Display Port M-HDMI F Adapter Cable	
		White	
DRAWN BY		CUSTOMER P/N :	
CHECK BY		12.03.3134	
APPD BY		SCALE NONE	
		UNIT MM	
		DATE 2013.01.11	
		DRAWING NO. :	
		REV. A	
		1/3	

DRAWN BY		CUSTOMER P/N :	
CHECK BY		12.03.3134	
APPD BY		SCALE NONE	
		UNIT MM	
		DATE 2013.01.11	
		DRAWING NO. :	
		REV. A	
		1/3	