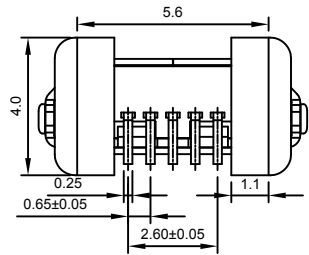
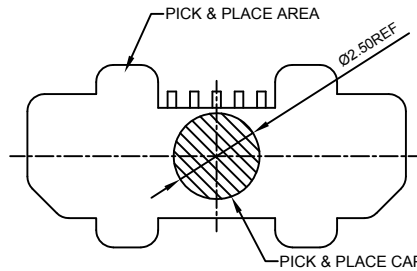
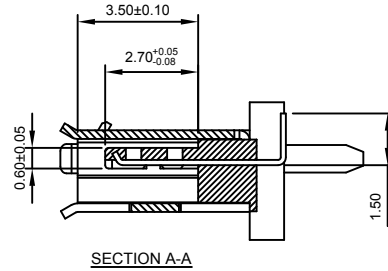
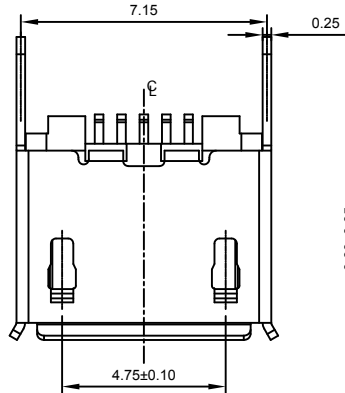
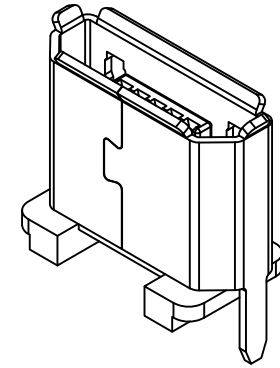


Global Connector Technology Ltd. - USB3140: μ USB Receptacle, Type B, Surface Mount, Vertical, With Through Hole Shell Stakes



Designed to comply with physical, electrical and environmental requirements of Micro USB Standard (USB2.0)



Specifications 规格:

Materials 材料:

- Plastic Housing 塑胶外壳: LCP, UL94V-0, Black (黑色)
- Contact Terminal 接触端子: Copper Alloy 铜合金.
- Metallic Shell 金属外壳: Stainless Steel 不锈钢 T=0.25mm.

Plating 电镀:

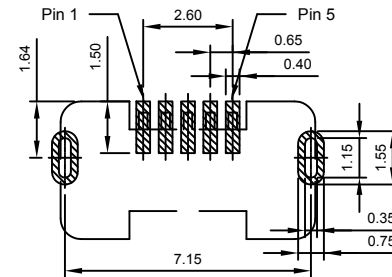
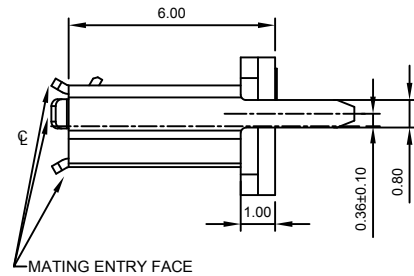
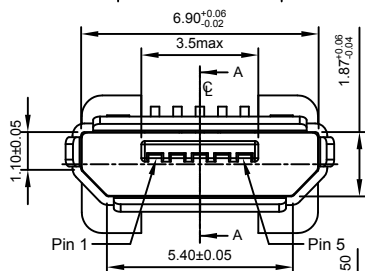
- Underplating 底层电镀: 50 μ " Nickel, 50 μ " 镍
- Finish 表面处理: Contact Area 接触面积: 30 μ " Gold plating (镀金)
- Solder Tails 焊接末端: Gold Flash 镀金
- Metallic Shell 金属外壳: Matte Tin 雾锡

Electrical 电气规格:

- Voltage Rating 电压额定值: 100 V AC
- Current Rating 电流额定值: Signal (Pins 2,3,4)信号: 1.0 A. Power (Pins 1,5)电源: 1.8A.
- Operating Temperature 工作温度: -30°C to +85°C.
- Contact Resistance 接触电阻值: 30m Ω Max.
- Insulating Resistance 绝缘电阻值: 1000M Ω Min.
- Dielectric Withstand Voltage 耐电压: 500V AC/Minute

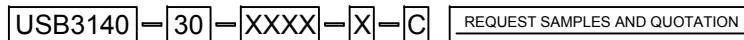
Mechanical 机械性规格:

- Mating Force 插入力: 35N Max.
- Unmating Force 拔出力: 8N Min. Δ
- Durability 耐久性: 10,000 Cycles 次插拔



RECOMMENDED P.C.B LAYOUT
GENERAL TOLERANCE: ± 0.05
AS VIEWED FROM COMPONENT SIDE

Ordering Grid



Contact Plating
30 = 30 μ " Gold

Shell Stake Length "S"
0170 = 1.70mm (for 1.00mm PCB)
0230 = 2.30mm (for 1.60mm PCB)

Packing Options
C = Tape & Reel with Cap
(500 per reel)

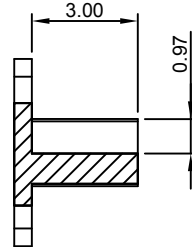
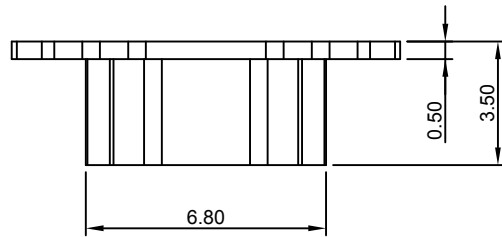
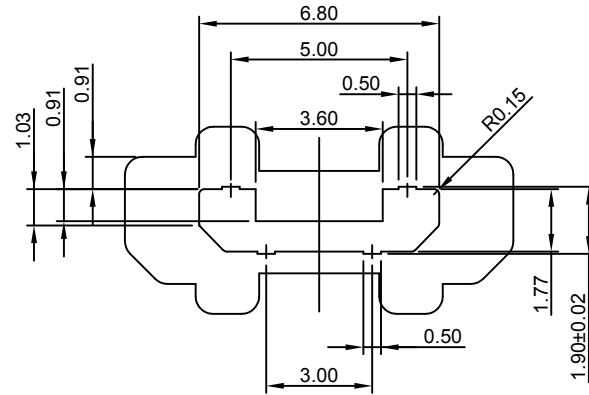
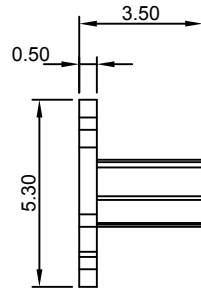
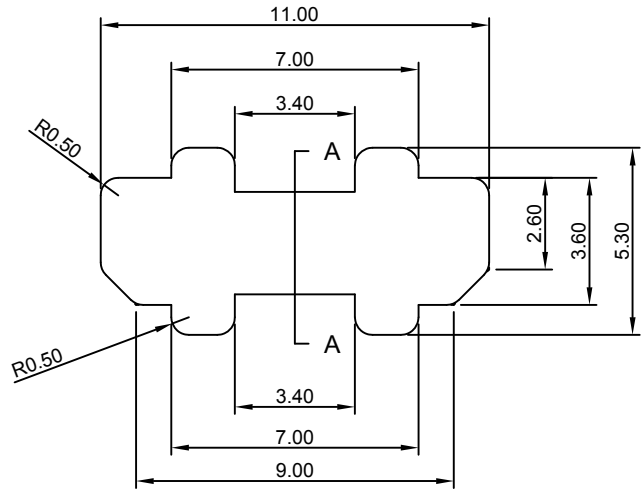
Mating Entry Face
1 = With Mating Entry Face (Standard)
0 = Without Mating Entry Face

By	AJO	ASE
DETAIL	DRAWING RELEASE	UNMATING FORCE CHANGE
REV	A	B
DATE	02/04/13	28/05/13

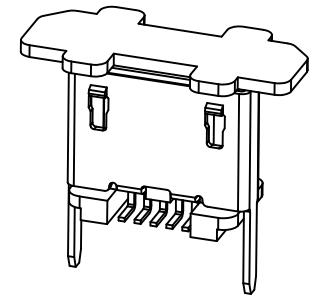
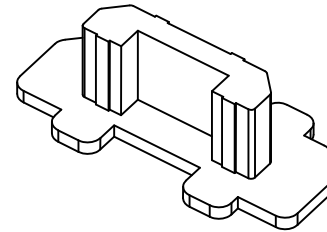


Tolerances (Except as noted)		Part Number:-	Date:-
Dimensions in mm		USB3140	02 APR 13
Description:-			
μ USB RECEPTACLE, TYPE B, SURFACE MOUNT, VERTICAL, WITH THRU HOLE SHELL STAKES			
THIS DRAWING IS CONFIDENTIAL AND MUST NOT BE COPIED OR DISCLOSED WITHOUT WRITTEN CONSENT		Scale	Revision
Third Angle Projection		NTS	B
		Material	Drawn by
		See Note	AJO
		E & OE	Sheet No.
			1/3

GCT
www.gct.co



SECTION A-A



Notes:
 Material: LCP+30%GF,UL94-V0,Color:Black
 Burrs: Unless otherwise specified 0.05mm Max.
 Cavity mark, mold mark, height 0.2mm Max.

Pre-reflow solder process cap may be tight and difficult to remove by hand.
 Post-reflow cap may be easily removed.

By	AJO	ASE
DETAIL	DRAWING RELEASE	UNMATING FORCE CHANGE
REV DATE	A 02/04/13	B 28/05/13

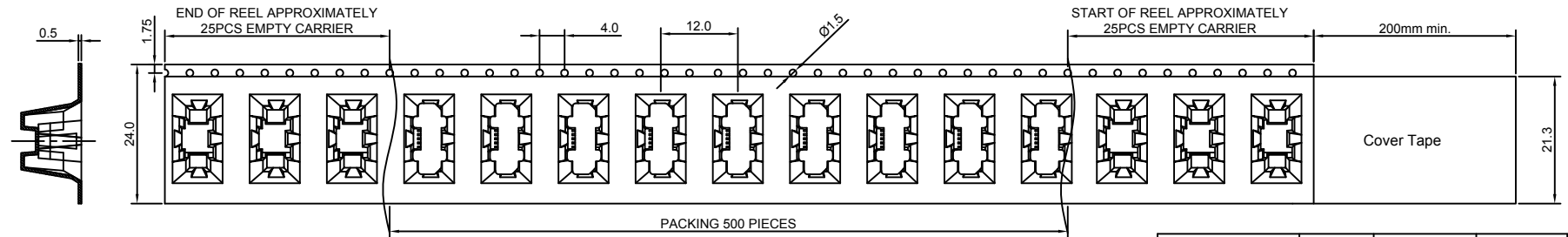


Tolerances (Except as noted)		Part Number:-	Date:-
Dimensions in mm		USB3140	02 APR 13
X.X ± 0.10	X.X° ± 2°	Description:- μ USB RECEPTACLE, TYPE B, SURFACE MOUNT, VERTICAL, WITH THRU HOLE SHELL STAKES	
X.XX ± 0.05	X.XX° ± 1°		
X.XXX ± 0.03	X.XXX° ± 0.5°		
Third Angle Projection		© THIS DRAWING IS CONFIDENTIAL AND MUST NOT BE COPIED OR DISCLOSED WITHOUT WRITTEN CONSENT	

GCT
www.gct.co

Scale NTS	Revision B	Material See Note	Drawn by AJO	E & OE	Sheet No. 2/3
-----------	------------	-------------------	--------------	--------	---------------

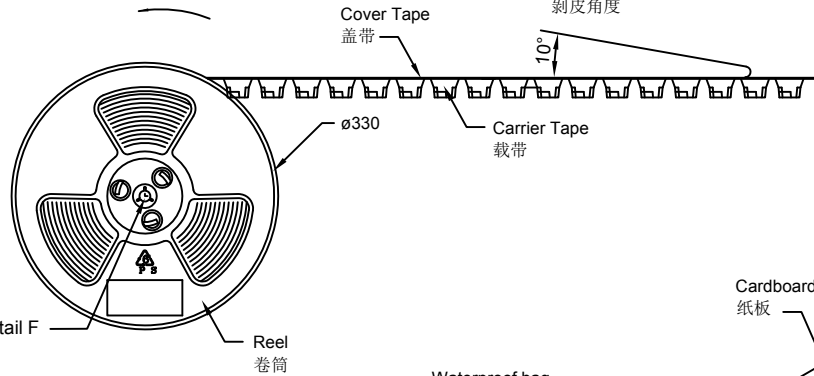
Global Connector Technology Ltd. - USB3140: μ USB Receptacle, Type B, Surface Mount, Vertical, With Through Hole Shell Stakes



Products P/N	PCS/Reel	Reels/Carton	PCS/Carton
USB3140	500	3	1500

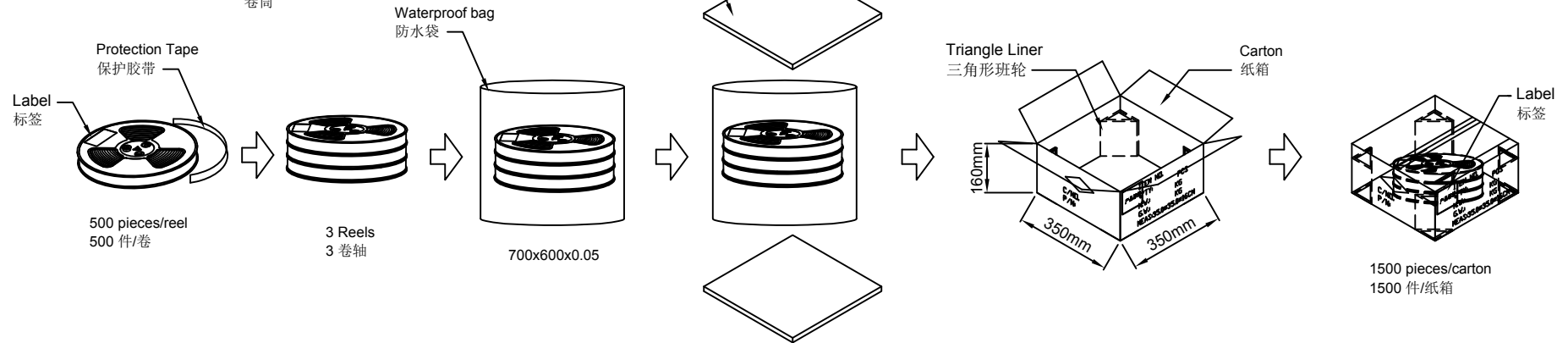
I/O Direction
卷盤繞逆時針方向轉動

Peel off Angle
剝皮角度



Notes注意:
Peeling off force of top tape: 0.1-1.3N (Peeling direction as shown)

Materials材料:
Carrier Tape: Polystyrene (PS)
Top Tape: PE
Reel Tape: Polystyrene (PS)



By	AJO	ASE
DETAIL	DRAWING RELEASE	UNMATING FORCE CHANGE
REV DATE	A 02/04/13	B 28/05/13



Tolerances (Except as noted)		Part Number:-	Date:-
Dimensions in mm		USB3140	02 APR 13
X.X ± 0.50	X.X° ± 2°	Description:-	
X.XX ± 0.30	X.XX° ± 1°	μ USB RECEPTACLE, TYPE B, SURFACE MOUNT, VERTICAL, WITH THRU HOLE SHELL STAKES	
X.XXX ± 0.20	X.XXX° ± 0.5°	© THIS DRAWING IS CONFIDENTIAL AND MUST NOT BE COPIED OR DISCLOSED WITHOUT WRITTEN CONSENT	
Third Angle Projection		Scale NTS	Revision B

GCT

www.gct.co

Material See Note	Drawn by AJO	E & OE	Sheet No. 3/3
-------------------	--------------	--------	---------------