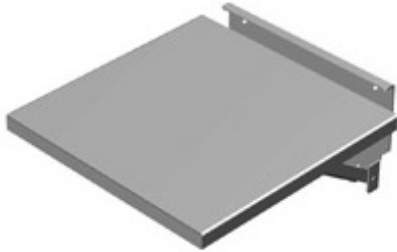


Fold Down Shelf

Features



- Supports various equipment used temporarily to service/program switchgear inside enclosures.
- Mounts with bolts through doors or sides.
- Weight capacity 100 lbs.
- Finished in ANSI 61 Gray.

Part No.	Work Surface	
	W	D
FDS1212GY	12.00	12.00
FDS1818GY	18.00	18.00



Data subject to change without notice.