

## PrevaLED Linear Value

### Light Engines – Constant Current



#### Areas of application

- Retail outlets
- Car parks
- Warehouses
- Outdoor applications only in suitable luminaires

#### Product benefits

- SELV module for easy luminaire design
- Modules can be easily joined together to make seamless strip lighting
- Slim module (comparable to a fluorescent T8 tube)
- Quick and simple installation
- Energy saving compared to T5 or T8 fluorescent lamps
- Simple system construction
- Self-cooling, no additional heat sink required
- Homogeneous illumination without shadows

#### Product features

- Poke-in wire connection for 0.5 mm<sup>2</sup> wire
- VDE-certified safety
- High color consistency: 4 SDCM
- Geometry according to Zhaga specification
- CE marked and UL listed
- High module efficacy: up to 130 lm/W



## Technical data

### Electrical data

Product description	Nominal current	Rated wattage	Type of current
PLVZ1-LIN 1100-830-280	0.25 A	7.70 W	DC
PLVZ1-LIN 1100-840-280	0.25 A	7.70 W	DC
PLVZ1-LIN 1300-830-560	0.25 A	9.10 W	DC
PLVZ1-LIN 1300-840-560	0.25 A	9.10 W	DC
PLVZ1-LIN 2200-830-560	0.50 A	15.30 W	DC
PLVZ1-LIN 2200-840-560	0.50 A	15.30 W	DC
PLVZ1-LIN 650-830-280	0.13 A	4.60 W	DC
PLVZ1-LIN 650-840-280	0.13 A	4.60 W	DC

### Light technical data

Product description	Color temperature	Color rendering index Ra	Light color as per EN 12464-1	Light color LED
PLVZ1-LIN 1100-830-280	3000 K	> 80	Warm White	white
PLVZ1-LIN 1100-840-280	4000 K	> 80	Cool White	white
PLVZ1-LIN 1300-830-560	3000 K	> 80	Warm White	white
PLVZ1-LIN 1300-840-560	4000 K	> 80	Cool White	white
PLVZ1-LIN 2200-830-560	3000 K	> 80	Warm White	white
PLVZ1-LIN 2200-840-560	4000 K	> 80	Cool White	white
PLVZ1-LIN 650-830-280	3000 K	> 80	Warm White	white
PLVZ1-LIN 650-840-280	4000 K	> 80	Cool White	white

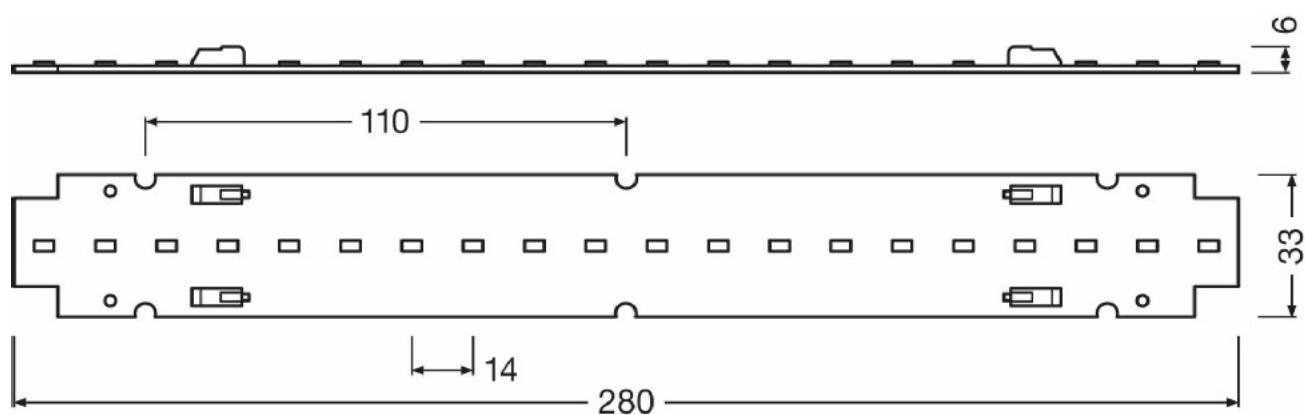
Product description	Luminous flux	Luminous efficacy	Beam angle
PLVZ1-LIN 1100-830-280	1016 lm	121 lm/W	115 °
PLVZ1-LIN 1100-840-280	1077 lm	128 lm/W	115 °
PLVZ1-LIN 1300-830-560	1218 lm	122 lm/W	115 °
PLVZ1-LIN 1300-840-560	1292 lm	130 lm/W	115 °
PLVZ1-LIN 2200-830-560	2031 lm	122 lm/W	115 °
PLVZ1-LIN 2200-840-560	2154 lm	130 lm/W	115 °
PLVZ1-LIN 650-830-280	609 lm	121 lm/W	115 °
PLVZ1-LIN 650-840-280	646 lm	128 lm/W	115 °

### Dimensions & weight

## Product family datasheet

Product description	Length
PLVZ1-LIN 1100-830-280	280.0 mm
PLVZ1-LIN 1100-840-280	280.0 mm
PLVZ1-LIN 1300-830-560	560.0 mm
PLVZ1-LIN 1300-840-560	560.0 mm
PLVZ1-LIN 2200-830-560	560.0 mm
PLVZ1-LIN 2200-840-560	560.0 mm
PLVZ1-LIN 650-830-280	280.0 mm
PLVZ1-LIN 650-840-280	280.0 mm

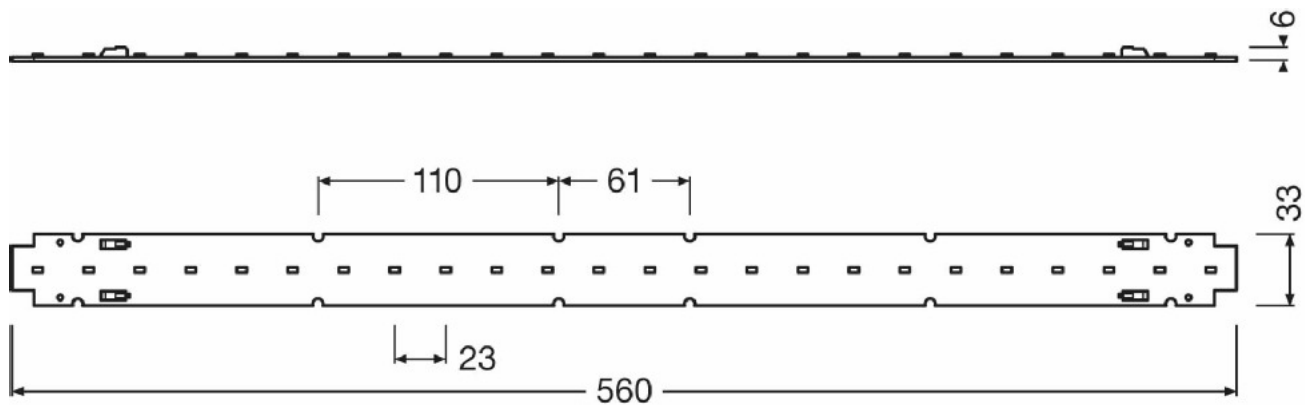
### Produkt Strichzeichnungen (vermasst)



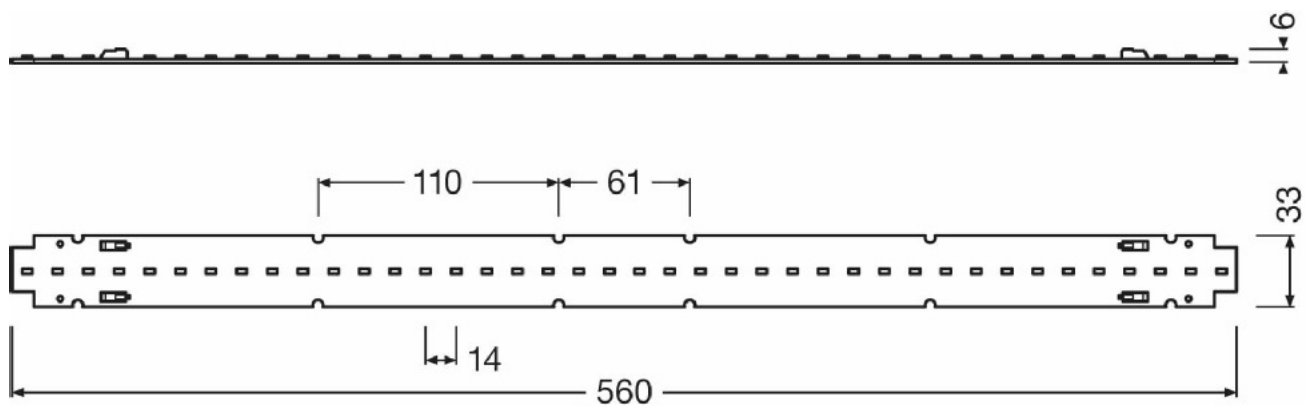
Product line drawing

PLVZ1-LIN 1100-830-280 | PLVZ1-LIN 1100-840-280

Product family datasheet

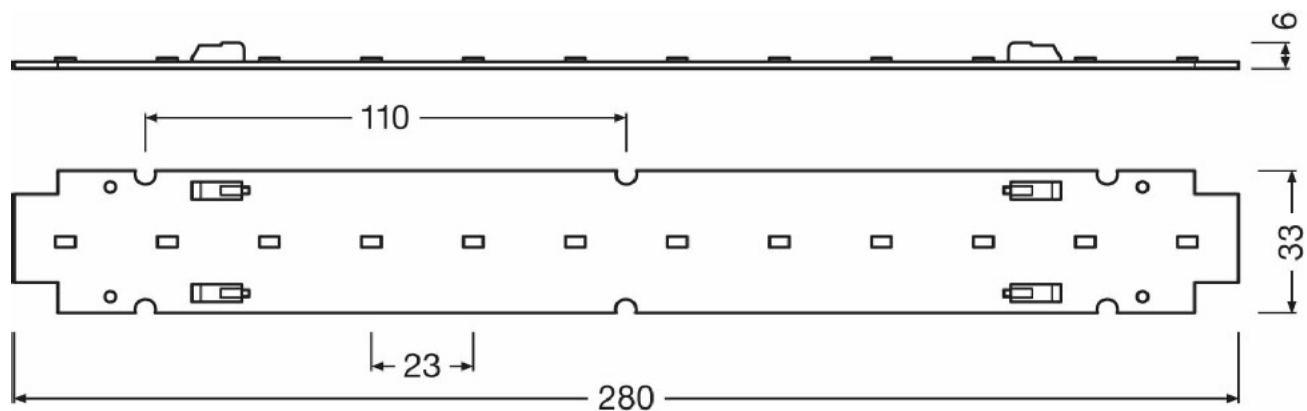


Product line drawing  
PLVZ1-LIN 1300-830-560 | PLVZ1-LIN 1300-840-560



Product line drawing  
PLVZ1-LIN 2200-830-560 | PLVZ1-LIN 2200-840-560

## Product family datasheet



Product line drawing  
 PLVZ1-LIN 650-830-280 | PLVZ1-LIN 650-840-280

### Temperatures

Product description	Maximum temperature at tc test point	Ambient temperature range
PLVZ1-LIN 1100-830-280	70 °C	-20...+45 °C
PLVZ1-LIN 1100-840-280	70 °C	-20...+45 °C
PLVZ1-LIN 1300-830-560	70 °C	-20...+45 °C
PLVZ1-LIN 1300-840-560	70 °C	-20...+45 °C
PLVZ1-LIN 2200-830-560	70 °C	-20...+45 °C
PLVZ1-LIN 2200-840-560	70 °C	-20...+45 °C
PLVZ1-LIN 650-830-280	70 °C	-20...+45 °C
PLVZ1-LIN 650-840-280	70 °C	-20...+45 °C

### Lifespan

Product description	Lifespan
PLVZ1-LIN 1100-830-280	50000 h
PLVZ1-LIN 1100-840-280	50000 h
PLVZ1-LIN 1300-830-560	50000 h
PLVZ1-LIN 1300-840-560	50000 h
PLVZ1-LIN 2200-830-560	50000 h

## Product family datasheet

Product description	Lifespan
PLVZ1-LIN 2200-840-560	50000 h
PLVZ1-LIN 650-830-280	50000 h
PLVZ1-LIN 650-840-280	50000 h

### Additional product data

Product description	Number of LEDs per module
PLVZ1-LIN 1100-830-280	20
PLVZ1-LIN 1100-840-280	20
PLVZ1-LIN 1300-830-560	24
PLVZ1-LIN 1300-840-560	24
PLVZ1-LIN 2200-830-560	40
PLVZ1-LIN 2200-840-560	40
PLVZ1-LIN 650-830-280	12
PLVZ1-LIN 650-840-280	12

### Capabilities

Product description	Dimmable
PLVZ1-LIN 1100-830-280	No
PLVZ1-LIN 1100-840-280	No
PLVZ1-LIN 1300-830-560	No
PLVZ1-LIN 1300-840-560	No
PLVZ1-LIN 2200-830-560	No
PLVZ1-LIN 2200-840-560	No
PLVZ1-LIN 650-830-280	No
PLVZ1-LIN 650-840-280	No

### Country specific categorizations

Product description
PLVZ1-LIN 1100-830-280
PLVZ1-LIN 1100-840-280
PLVZ1-LIN 1300-830-560
PLVZ1-LIN 1300-840-560
PLVZ1-LIN 2200-830-560
PLVZ1-LIN 2200-840-560
PLVZ1-LIN 650-830-280

## Product family datasheet

### Product description

PLVZ1-LIN 650-840-280







### Application advice

For more detailed application information and graphics please see product datasheet.

### Sales and Technical Support

Sales and Technical Support [www.osram.com](http://www.osram.com)

### Download Data

File	
	Product Datasheet PrevaLED Linear Value datasheet
	Product Family Datasheet PrevaLED Linear Value Preliminary Datasheet
	CAD data PLVZ1-Lin-1100_LEP+1100(STP+file)
	CAD data PLVZ1-Lin-1300_LEP+1300(STP+file)
	CAD data PLVZ1-Lin-2200_LEP+2200(STP+file)
	CAD data PLVZ1-Lin-650_LEP+650(STP+file)

### Logistical Data

Product code	Product description	Packaging unit (Pieces/Unit)	Dimensions (height x width x length)	Volume	Gross weight
4052899914834	PLVZ1-LIN 1100-830-280	Shipping carton box 40	- x - x -		
4052899914858	PLVZ1-LIN 1100-840-280	Shipping carton box 40	- x - x -		
4052899914872	PLVZ1-LIN 1300-830-560	Shipping carton box 40	- x - x -		
4052899914896	PLVZ1-LIN 1300-840-560	Shipping carton box 40	- x - x -		

## Product family datasheet

---

4052899914919	PLVZ1-LIN 2200-830-560	Shipping carton box 40	- x - x -
4052899914933	PLVZ1-LIN 2200-840-560	Shipping carton box 40	- x - x -
4052899914797	PLVZ1-LIN 650-830-280	Shipping carton box 40	- x - x -
4052899914810	PLVZ1-LIN 650-840-280	Shipping carton box 40	- x - x -

---

The mentioned product code describes the smallest quantity unit which can be ordered. One shipping unit can contain one or more single products. When placing an order, for the quantity please enter single or multiples of a shipping unit.

---

### Disclaimer

---

Subject to change without notice. Errors and omission excepted. Always make sure to use the most recent release.