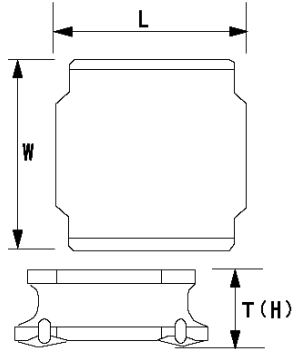


Spec Sheet

SMD Power Inductors for Industrial / Automotive Comfort and Safety Applications (NR series H type / V type / S type)

NRS4018T100MDGJV



■ Features

- Item Summary
10 μ H ($\pm 20\%$), 1300mA, 1200mA
- Lifecycle Stage
Mass Production
- AEC-Q200 qualified
- Standard packaging quantity (minimum)
Taping 3500pcs

■ Products characteristics table

CaseSize (EIA/JIS)	-/4018
Inductance	10 μ H ($\pm 20\%$)
Inductance Measuring Frequency	100kHz
Rated Current -Saturation Current	1300mA
Rated Current -Temperature Rise Current	1200mA
DC Resistance (max)	0.18 Ω
Avg. of DC Resistance	0.15 Ω
Temperature Range	-40°C to 125°C
Self-resonant Frequency (min)	25MHz
RoHS Compliance	Yes
Halogen Free	Yes
Soldering Method	Reflow

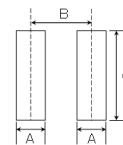
■ External Dimensions

L	4mm ± 0.2
W	4mm ± 0.2
H	1.8mm max

■ Recommended Land Patterns

【推奨ランドパターン】
 実装上の注意
 ・実装状態を確認の上ご使用ください。また、ご購入の際は、
 ・本製品のはんだ付けはリフローはんだ工法に限り、
 ・適用可能な実装条件は、
 ・実装条件を確認の上ご使用ください。
 ・実装条件を確認の上ご使用ください。
 ・実装条件を確認の上ご使用ください。

【Recommended Land Patterns】
 Surface Mounting
 ・Mounting and soldering conditions should be checked beforehand.
 ・Applicable soldering process to these products is reflow soldering only.



SMD Power Inductors (NR series/NR series H type/S type /V type)

Type	A	B	C
NR 4010, NRS4010,			
NR 4012, NRS4012,	1.2	2.8	3.7
NR 4018, NRS4018			

unit:mm

2014.01.23

The data is reference only. Electrical characteristics vary depending on environment or measurement condition.
 TAIYO YUDEN reserves the right to make change to the Date at any time without notice.
 Before making final selection, please check product specification.