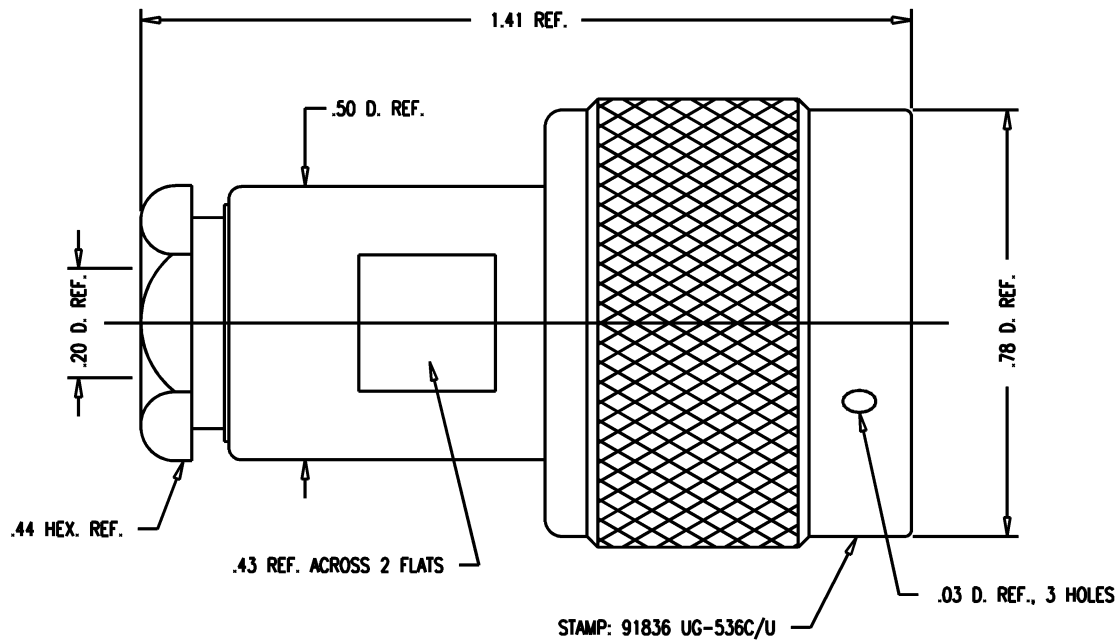


# GSD

UG-536C/U



**NOTES:**

1. FOR USE WITH RG-55/U & RG-58/U CABLE.
2. FOR CABLING INSTRUCTIONS SEE CP-1014.
3. INTERFACE PER MIL-STD-348, FIG. 304-1.
4. MATERIALS:  
 INSULATOR: TEFLON, ASTM-D-1457  
 GASKETS: SILICONE RUBBER, ZZ-R-765  
 C-RING & OUTER CONTACT: PHOSPHOR BRONZE, QQ-B-750  
 ALL OTHER METAL PARTS: BRASS, ASTM-B16
5. FINISHES:  
 CENTER CONTACT: HARD GOLD PLATE, PER MIL-G-45204  
 ALL OTHER METAL PARTS: SILVER PLATE, PER QQ-S-365
6. ELECTRICAL CHARACTERISTICS:  
 NOMINAL IMPEDANCE: 50 OHMS  
 WORKING VOLTAGE: 1000 VRMS  
 FREQUENCY RANGE: DC TO 11 GHz.

**REVISIONS**

ISSUE	CHANGES
5	CN 32748 C WJM 01/15/91

WJM1684

SCALE	4:1
APPROX SURFACE AREA	KN-58-07
USED ON	
REF:	RE-B-49090 B
<b>PLUG, N</b>	
DRAWN	WJM
DATE	01/15/92
DESIGN	MJB
DATE	01/17/92
APPR.	DATE

**KINGS**  
ELECTRONICS CO., INC.  
TUCKAHOE, NEW YORK 10707

UG-536C/U

# GSD