



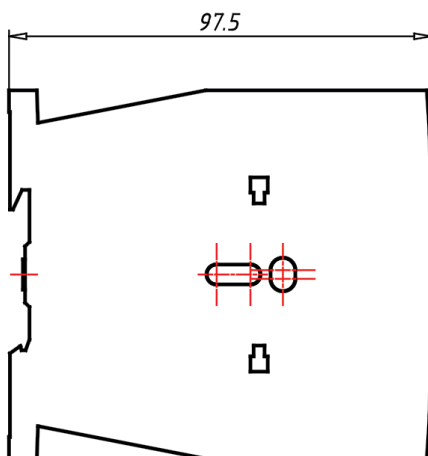
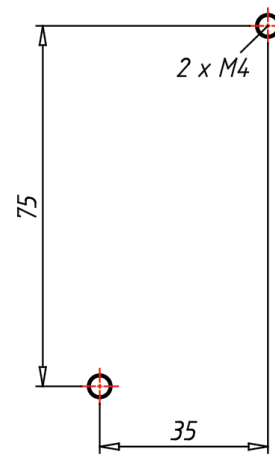
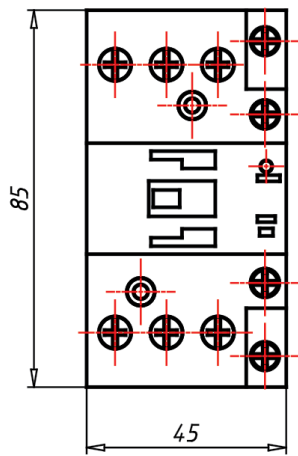
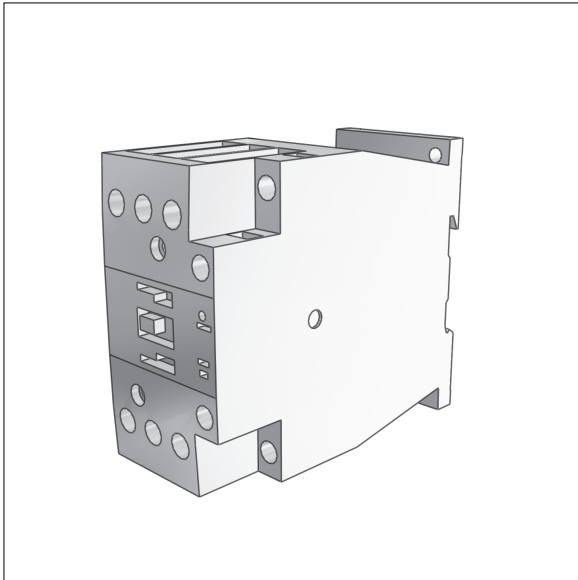
Contactors up to 150 A with electronic actuation

PDF DATASHEET

© 1992-2013 CADENAS GmbH

Last Modification (geometry): 14 Nov 2013 13:32:15

Datasheet creation date: 27 Feb 2014 05:03:45





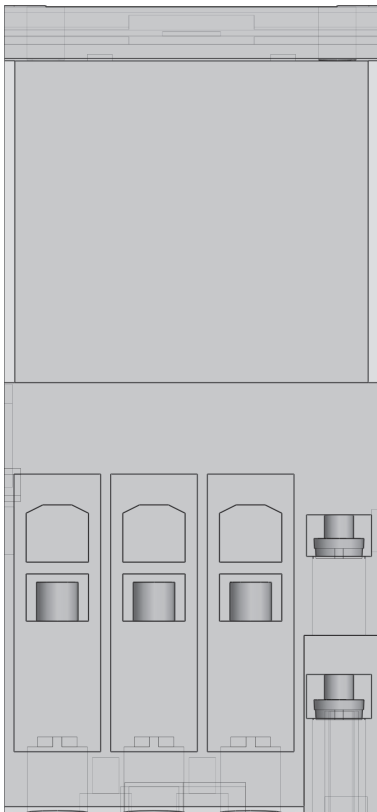
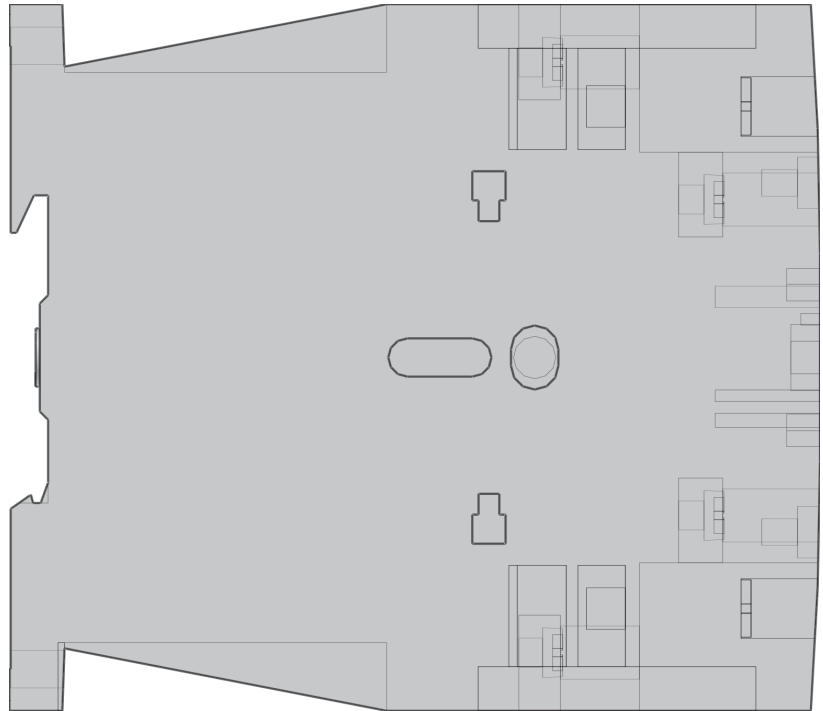
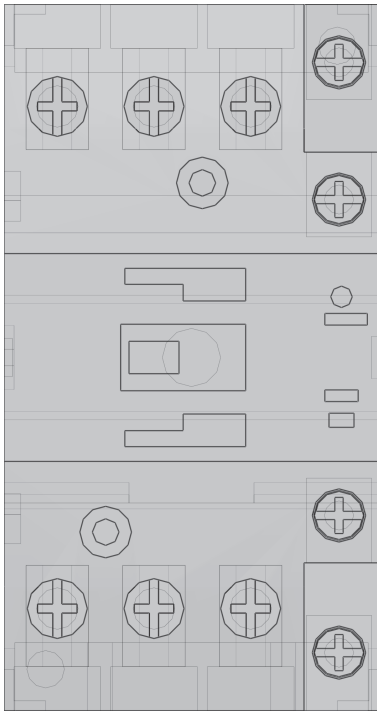
Contactors up to 150 A with electronic actuation

PDF DATASHEET

© 1992-2013 CADENAS GmbH

Last Modification (geometry): 14 Nov 2013 13:32:15

Datasheet creation date: 27 Feb 2014 05:03:45





Contactors up to 150 A with electronic actuation

PDF DATASHEET

© 1992-2013 CADENAS GmbH

Last Modification (geometry): 14 Nov 2013 13:32:15

Datasheet creation date: 27 Feb 2014 05:03:45

| | |
|--|---|
| PRODUKTBILD (Product picture) | 2110pic-243.bmp |
| IDNR (Identification) | 104447 |
| MANUFACTURE12 (Manufacturer Type Description) | DILMF25-01(RAC48) |
| DESCRIPTION13 (Short Description) | SEMI F47 contactor 600V 20HP |
| DESCRIPTION14 (Long Description) | Contactor with double box terminals for reliable wiring of different cable cross-sections. Front connections enable simple wiring. Multiple voltage range coils with integrated suppressor circuit and minimized heat dissipation. The same dimensions for AC- and DC-operated contactors enables the use of the same accessories. Deliverable accessories: auxiliary contact modules plug-in type and side mounting, mechanical interlock, electronic timer module, overload relay, star-point bridge, paralleling link, IP2X shroud |
| EAN (EAN) | 4015081042647 |
| CNSECLASS512 (__PW_CLASSID__) | 27-37-10-03 |
| VERPACKUNGS17 (Packaged weight / kg) | 0,531 |
| URL1 (Product data sheet(en)) | Product data sheet(en) |
| URL1_de (Product data sheet(de)) | Product data sheet(de) |



Contactors up to 150 A with electronic actuation

Stückliste

| N° | Description | Amount |
|----|-------------|--------|
| 1 | 104447 | 1 |