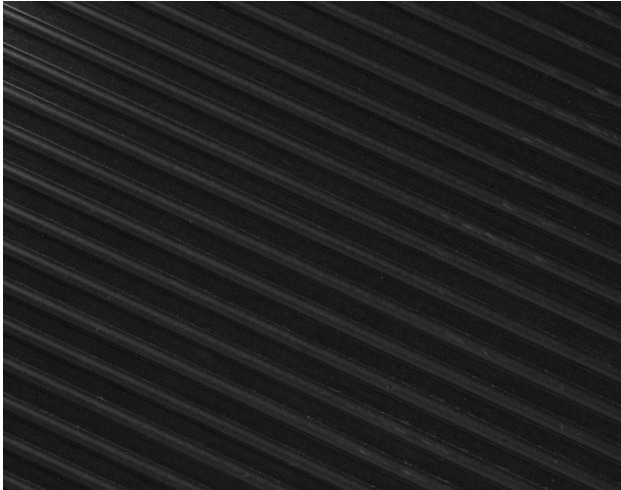




35880 - SWITCHBOARD MATTING,CORRUGATED , BLACK, 0.25"x 24 IN x 75 FT



- Made in the United States of America
- For use in in High Voltage work spaces, such as Power boards, Electrical Rooms, Transformer Stations, and Motor Control Centers.
- Insulative Corrugated embossed pattern 1/4" (.250") material
- Designed to safely insulate employees working on or in the vicinity of high voltage equipment by interrupting the electrical path to ground
- ASTM D178-01 Dielectric resistant test voltage of 30,000 VAC, with Recommended Max. use of 17,000 VAC
- Complies with OSHA standards.
- Made of PVC, Type II, Class 2 of ASTM rating.
- Flame resistant and Non-conductive.