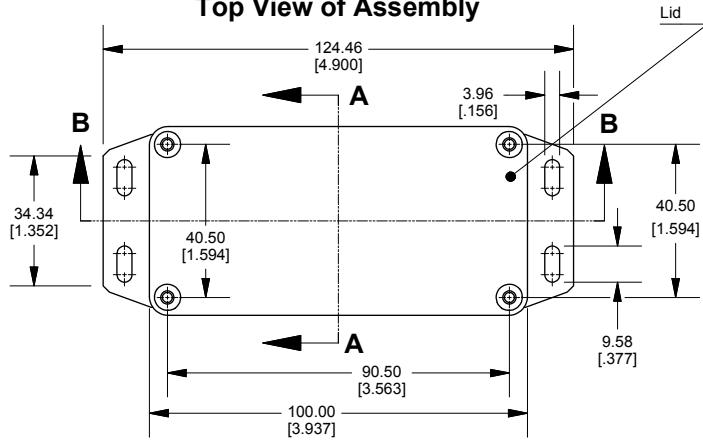
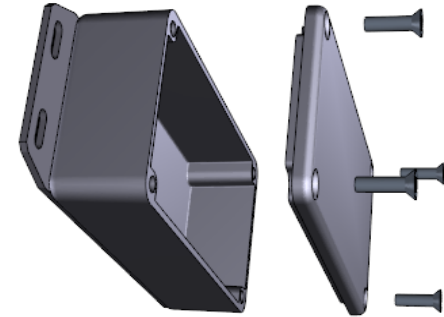
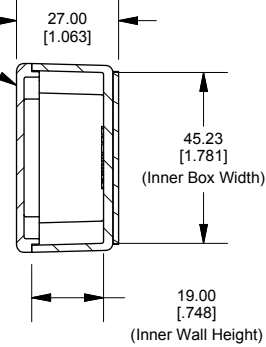


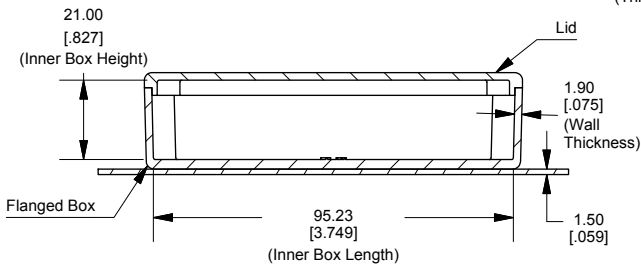
Top View of Assembly



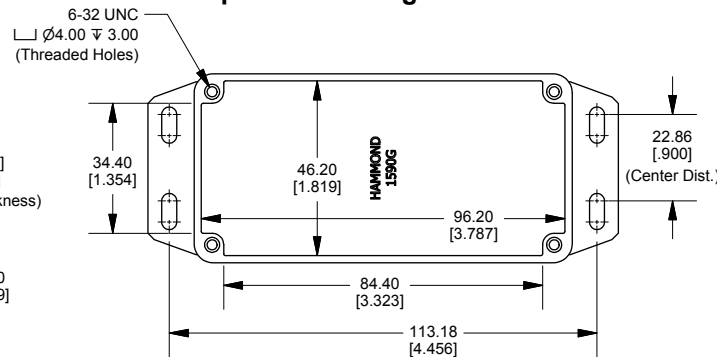
SECTION A-A End View of Assembly



SECTION B-B Side View of Assembly



Top View Looking Inside Box



Enclosures can be Factory Modified (Milling, Drilling, Printing etc.)
 Contact Factory mjm@hammondmfg.com for quotes
 Solid models of this enclosure available in STEP or IGES.

NOTE

Purchased assembly includes box, lid and 4 cover screws.
 Box and lid are made from Diecast Aluminum Alloy.
 Silicone Gasket supplied with liquid resistant enclosure.
 Bottom Flange is Welded.

PART NUMBERS

1590GF Enclosure	
Unfinished	1590GF
Black Textured Powder Paint	1590GFBK
1590GF Liquid Resistant Enclosure (Silicone Gasket)	
Unfinished	1590W GF
Black Textured Powder Paint	1590W GFBK
ACCESSORIES	
Recommended Torque: 75 ozf.in / 55 cN.m	
Liquid Resistant Cover Screws	
Unfinished Cover Screws (Pkg 100) [6-32 x 1/2" With O-Ring]	1590W MS100
Black Cover Screws (Pkg 100) [6-32 x 1/2" With O-Ring]	1590W MS100BK
Standard Cover Screws	
Unfinished Cover Screws (Pkg 100) [6-32 x 1/2"]	1590MS100
Black Cover Screws (Pkg 100) [6-32 x 1/2"]	1590MS100BK

B

B

A

A

Dimensions:
mm
[inches]